

2022 Annual Report

The Foundation for Delaware County





We give our hearts
to this place we love

Dear Supporter and Partner,

Six years ago, our founders passionately advocated for a community endowment, a lasting “community savings account” that could be directed towards the most pressing issues in Delaware County. Little did we know what was in store for us and, just a few years later, how crucial that foresight would be.

While the pandemic upended our lives and strained our businesses, institutions, and the nonprofit sector, it made one thing clear: Delaware County is a place where we work together, shoulder to shoulder, to create positive change. We learned that partnerships — public and private, business and philanthropy, government, and nonprofits — give us the power to tackle even the most daunting challenges.

We are immensely proud of our work together this past year. This publication highlights people and organizations across Delaware County that are committed to bettering our community. While this is The Foundation for Delaware County’s report, it is really the story of the notable ways that nonprofits, government partners, our donors, and our staff have thought creatively, rolled up their sleeves, and

joined together to address the needs of our county and its people.

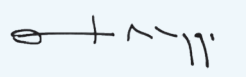
And the needs are growing **as our county emerges from the pandemic and faces ongoing social and economic challenges**. The struggles many families faced pre-pandemic have intensified. The enormous weight of rising inflation and gas costs has forced too many families to send their children to bed hungry or left them worrying about where they will sleep at night.


As you read through this report, we invite you to ask:

What is YOUR vision for the future of our community? What needs do you want to address, and what opportunities do you envision for future generations?

We hope the stories in these pages will inspire you. We hope they spur you to action. And we hope that in your philanthropic journey, you will look to us for ways **we can join together to advance the power of good in Delaware County**.


Cyrise L. Dixon
Chair


The Hon. Dominic F. Pileggi
Immediate Past Chair


Frances M. Sheehan
President

PEOPLE LIVING AT
OPPOSITE ENDS OF
THE AMERICAN DREAM—
3 MILES APART

Delaware County is made up of 191 square miles divided into 49 municipalities. We are the fifth most populous county in the state, yet we occupy the third smallest land mass.

We are a land of extremes. Urban centers border lush green spaces. We’re home to some of the wealthiest communities in the region and some of the poorest.

The economic outcomes for some of the poorest, lowest paid, and most vulnerable people in our county worsened during the pandemic. The underlying conditions that fostered an income and opportunity gap — such as racism, disparities in education and housing, and healthcare access — were exacerbated by job losses, illness, lack of childcare, and isolation.

These struggling communities are not located in far-off distant lands. They are in our backyard, with just a few short miles separating one world from the other.

IN DELAWARE COUNTY

16%

of Delco households experience at least 1 of 4 housing problems (overcrowding, high housing costs, lack of kitchen facilities, or lack of plumbing facilities)

1 in 10
people live in poverty

1 in 20
people live in deep poverty

Black infant mortality rate is
3.5X
higher than the rate for white infants

51,000
people in Delaware County were food insecure in 2020, of which

20,000
were children

Delaware County ranks
14th
out of 67 for quality-of-life measures

We give a hand to
those who struggle

The Foundation for Delaware County is one of 780 community foundations around the country. Unlike private foundations, our funding comes from many donors, not just a select few.

Together, we are building this collective endowment for the benefit of our community. Our pooled investments grow through financial stewardship, and the income generated supports our programs and grantmaking.

FOR GOOD FOREVER

Your collective investment in the Foundation gives us and our nonprofit partners the freedom to take on new projects, try innovative solutions, and leverage state, federal, and other philanthropic dollars

WE AWARD approximately \$2M annually from the endowment to organizations serving Delaware County.

Grants range from small but much-needed to large and far-reaching, focusing on areas such as behavioral health, childhood trauma, maternal health, education, food security, housing stability, environmental protection, crisis response, and the arts. Between 2020 and 2021, the Foundation distributed \$1M in unrestricted funds and administered over \$3M in county funds to help lessen the impact of COVID-19. The Foundation has no shareholders, so every dollar placed with us goes back into our community. **Our work doesn't stop at grantmaking.**

WE FACILITATE collaborations to support the immediate needs of our county while also thinking strategically about systems change. We bring together donors, local nonprofits and the people they serve, and government partners to **encourage others to think boldly, reduce redundancy, and plan thoughtfully.**



TOMORROW, WHO KNOWS WHAT THE NEEDS MAY BE

WE EMPOWER the nonprofits that serve Delaware County. Through the Center for Nonprofit Excellence, nonprofit leaders receive professional development, resources, and peer support to pursue their missions more effectively. Our Nonprofit Endowment Program helps organizations start endowments so they may grow over time and ensure their longevity.



WE CHAMPION those who seek to do good. To date, 2,600 donors have worked with the Foundation to create a more vibrant Delaware County.

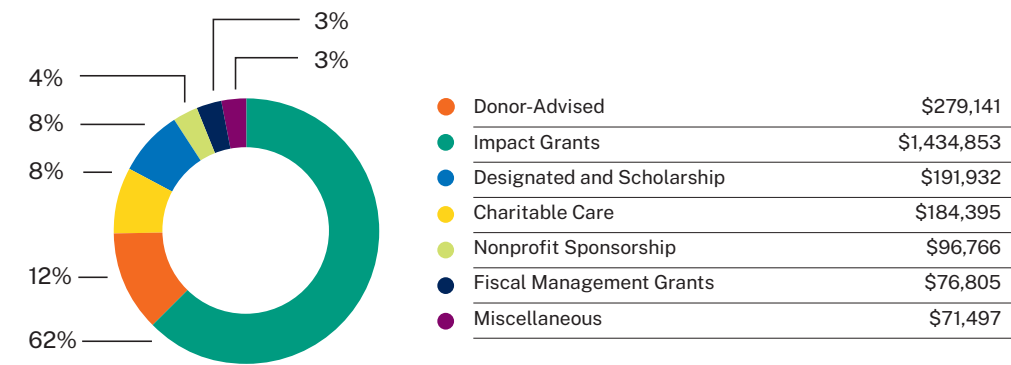
WE PROVIDE leadership and expertise to address public health issues. We run critically important public health programs — WIC, Nurse-Family Partnership, and Healthy Start — which serve 10,000 low-income parents, grandparents, and children each year.

TOGETHER, WE CAN BE READY

Whether you start a **donor-advised fund** to give back to your favorite causes, a **scholarship fund** to help students pursue their dreams, or an **endowment fund** to support a nonprofit's mission, The Foundation for Delaware County stands ready to help you make a difference in the lives of others.

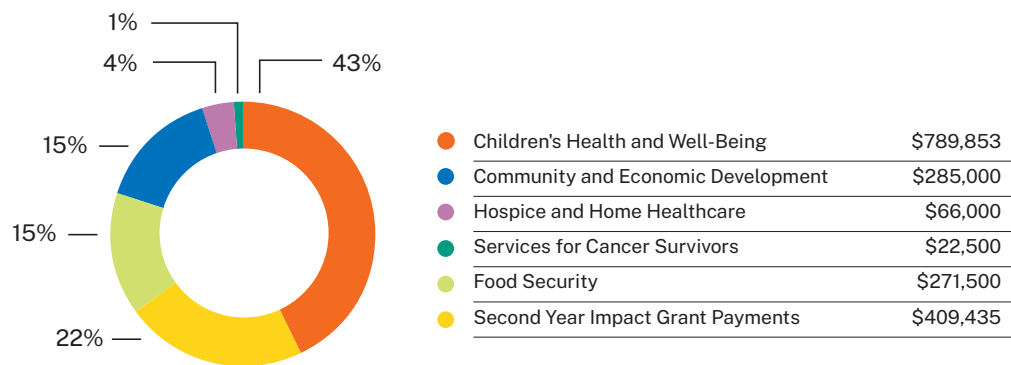
DURING THE 2022 FISCAL YEAR, THE FOUNDATION
DISTRIBUTED \$2.3M

GRANTS, SCHOLARSHIPS AND CHARITABLE SUPPORT



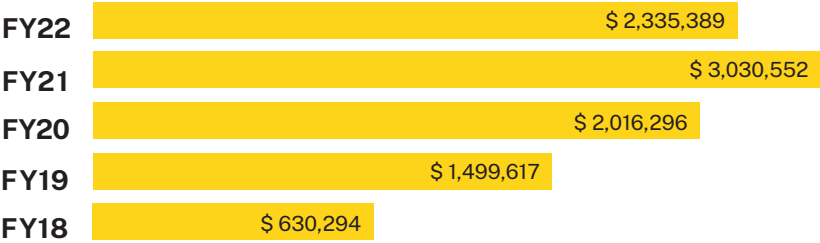
IMPACT GRANTS

In 2022, 51 nonprofits received \$1,434,853 in new Impact Grant awards, while 11 nonprofits received \$409,435 in second-year Impact Grants as part of a multi-year grant. This year, our focus areas included **Children's Health and Well-being, Community and Economic Development, Hospice and Home Healthcare, Food Security, and Services for Cancer Survivors.**



Each dollar distributed represents either a creative idea for collaboration or a critical need that deserves funding.

TOTAL FUNDING DISTRIBUTED



IMPACT GRANTS: Children's Health and Well-Being

IN THE PAST TWO YEARS, MENTAL HEALTH CHALLENGES HAVE SKYROCKETED

Mental health support in the months before, during, and after pregnancy is essential to ensure that babies are born healthy and well-cared-for by their parents.

These past few years have been difficult for so many of us, but for new and expectant families on low incomes, they have been especially brutal.

The stress of having a baby has been compounded by pandemic-related anxieties such as social isolation, job and housing insecurity, and rising inflation — leaving more parents in need of mental health services. Over the past two years, the Foundation has experienced a dramatic increase in requests for these services from

our public health programs' clients. There are long waits for help, and resources that are available without a waitlist are often low quality or lack cultural competence.

The Foundation awarded a \$30,000 Impact Grant to Lifecycle Woman-Care, which provides individual counseling, group counseling, and care coordination during and after pregnancy.

In addition, the Foundation offers supportive therapy services and the Moving Beyond Depression program to clients in our Healthy Start, Nurse-Family Partnership, and Delco First home-visiting programs, which provide essential support to clients for up to two years.



Mental health services for new and expectant parents are critically needed.

ACCESS TO EDUCATION IS CRITICAL

The Foundation awarded Education Law Center (ELC) a \$50,000 Impact Grant over two years to provide free legal services, advocacy, and outreach to help children in Delaware County access a quality public education. ELC services include an Education Helpline, which is Delaware County's only free legal service for students

who are wrongfully denied enrollment or educational supports and services.

This work is critical. Students with disabilities often don't receive tailored education plans because schools fail to conduct special education evaluations. Non-native English-speaking families can face limited access to

materials, educational services, and opportunities due to language barriers. At-risk children who are in foster care, the juvenile justice system, or experiencing homelessness often encounter school enrollment obstacles due to changing living situations, making it harder to earn required credits to graduate.



AS INCOMES SHRINK OR DISAPPEAR AND A DOLLAR BUYS LESS, MORE FAMILIES ARE GOING HUNGRY

The cost of food increased 10.4 percent from 2021 to 2022, the largest 12-month increase since 1981, according to the Consumer Price Index. In growing numbers, families are turning to food pantries for essentials, yet pantries are struggling to keep shelves full as they face the dual pressure of rising prices and increased demand. Delaware County pantries reported seeing fewer than 10,000 people in February 2022. By June, that number had risen to 14,000.

But there is power in size. Food banks, essential suppliers for food pantries, have more purchasing power because they can buy in bulk and pull resources from diverse sources.

The Foundation awarded Share Food Program a \$100,000 Impact Grant this past year to continue their efforts in Delaware County. Share is now the county’s lead agency for food distribution. Next year, they plan to open a 9,000-square-foot warehouse in Ridley Township, further expanding their commitment to the county and increasing access to life-saving resources for residents facing hunger. Between July 2021 and June 2022, **Share Food Program** served nearly 140,000 residents who were food insecure in Delaware County.

The Foundation's WIC program (Supplemental Nutrition Program for Women, Infants, and Children) has also seen a dramatic increase in clients due to rising inflation and food costs. On average, 9,000 Delaware County residents benefit from this critical supplemental food program each year.



WIC partners with a farmer near Limerick who comes to our Upper Darby clinic every Tuesday so clients can redeem their WIC vouchers for fruits and vegetables.

The average family in the WIC program has a monthly food budget of \$263.72. With rising inflation, there is not much a family can buy to sustain themselves on \$65/week.

THIS PAST SUMMER SAW A SERIES OF EXTREME CLIMATE EVENTS AROUND THE WORLD – SEPTEMBER SEEMED MORE LIKE JULY

Extreme weather hits vulnerable communities hardest. Public infrastructure is often poorly maintained, and private apartment buildings and houses in disrepair can’t withstand the impact of extreme weather events such as flooding.

Our local nonprofits are aiding the communities most affected by extreme weather. **The Foundation awarded Natural Lands a \$40,000 Impact Grant over two years to protect the Darby Creek Watershed and improve its capacity to weather the effects of storms.** The watershed, which includes all the land that drains into Darby Creek, is more than 77 square miles and covers one-third of Eastern Delaware County.



This funding will help under-resourced communities better manage stormwater, improve stream health, and prevent flooding. The improvements also will beautify parks and their facilities, and trees will be planted to provide more shade and help with erosion.





IMPACT GRANTS:
Community and Economic Development

FINANCING OUR FUTURE: PROMOTING LOCAL ECONOMIC REVITALIZATION AND COMMUNITY DEVELOPMENT

Above right: The Foundation awarded a \$50,000 grant to support the restoration and reopening of the 1927 Lansdowne Theater. (Funding with thanks to the Lillian H. Griffin Fund in memory of Lillian H. Griffin.)



The Lansdowne Economic Development Corporation (LEDC) envisions Lansdowne as a regional destination with a historic, walkable downtown, a thriving mix of businesses, and a vibrant arts and culture community. Together with community partners, LEDC is working to make that dream a reality.

The Foundation awarded LEDC a \$60,000 Impact Grant over two years to foster economic development in Lansdowne through the Utility Works MakerSpace and Penn State Brandywine's Launch Box, which relocated there in spring 2022. The Launch Box provides space and programming for entrepreneurs and small businesses seeking to launch and grow new companies.

The Foundation also awarded Penn State Brandywine \$30,000 over two years to support the Idea Test Lab, an entrepreneurship-focused academic program that supports business startup training and incubation located in the MakerSpace. Interested residents can sign up with an initial idea, and the Idea Test Lab offers training and resources to help them get started. The Idea Test Lab provides six weeks of classes/webinars, homework, and 1:1 coaching, culminating in a pitch to expert coaches that may lead to opportunities with angel investors.

2022 IMPACT GRANT AWARDEES

- \$789,853** Children's Health and Well-Being
- \$285,000** Community and Economic Development
- \$66,000** Hospice and Home Healthcare
- \$271,500** Food Security
- \$22,500** Services for Cancer Survivors
- \$409,435** Second-Year Payments to 2021 Impact Grantees

Children's Health and Well-Being

BE PROUD FOUNDATION

\$20,000 to support the behavioral health and well-being of Delaware County youth.

BOYS AND GIRLS CLUB OF CHESTER

\$40,000 to support the Future Leaders Program, an interactive, 6-week, culturally relevant youth workforce development experience for youth aged 12-15.

CCSA FOUNDATION

\$30,000 to support the development of a community-centric strategic plan.

CHESTER UPLAND YOUTH SOCCER

\$25,000 to address negative health issues among elementary and middle school students by providing regular physical activities alongside mentoring and nutrition education.

CHILD GUIDANCE RESOURCE CENTERS

\$25,000 to purchase a vehicle for client transportation.

DOMESTIC ABUSE PROJECT OF DELAWARE COUNTY

\$30,000 to prevent domestic violence and empower survivors with children to move toward self-sufficiency.

EASTERSEALS OF SOUTHEASTERN PENNSYLVANIA

\$8,185 to support a "TA-to-Teacher" staffing pipeline in partnership with Drexel University. This program provides teaching assistants with a path to employment as educators.

EDUCATION LAW CENTER – PENNSYLVANIA

\$50,000 over two years to provide free legal services, advocacy, and outreach to ensure that children in Delaware County have access to quality public education.

FAMILY AND COMMUNITY SERVICE OF DELAWARE COUNTY

\$15,000 to provide mental health support and other supportive services to children and adolescents in Delaware County.

FAMILY PROMISE OF DELAWARE COUNTY PA

\$17,420 to support embedding trauma-informed care into internal programs and, with external partners, address homelessness and the social determinants of health affecting children in Delaware County.

GIRLS ON THE RUN SOUTHEASTERN SUBURBAN, PA

\$5,000 to support programs that encourage resilience, confidence, and healthy practices in girls in Delaware County.

GREENER PARTNERS

\$20,000 to strengthen the health and well-being of students through seed-to-plate nutrition education, school gardening, and fresh food access in three Chester schools.

HARCUM COLLEGE

\$40,000 to divert youth from the "school-to-prison" pipeline through the support of school-based youth court training and partnerships with juvenile justice stakeholders.

HORIZONS EPISCOPAL ACADEMY

\$13,400 to support a six-week tuition-free full-day academic summer program for students in grades K-8.

J. LEWIS CROZER LIBRARY

\$68,848 over three years in partnership with Chester Eastside Inc. to support bilingual services for Spanish-speaking children.

KEEP MUSIC ALIVE

\$2,000 to support youth development through music.

KIDS SMILES

\$25,000 to expand outreach and improve oral health services for low-income children in Delaware County.

LIFECYCLE WOMANCARE

\$30,000 to support the integration of mental health services, including individual and group counseling for pregnant people in Delaware County.

MAKING A CHANGE GROUP

\$30,000 to support programming for the well-being of low-income youth in Chester.

MEDIA ARTS COUNCIL

\$15,000 to support performing arts and arts education programming for high school students at the new MAC Arts Center. (Funded with thanks to The Musical Performance Arts and Education Fund.)

MITZVAH CIRCLE

\$60,000 over three years to support partnerships with social service organizations in Delaware County to distribute diapers to low-income families.

PENNSYLVANIA PARTNERSHIPS FOR CHILDREN

\$25,000 to advocate for state investment in WIC and home-visiting programs for children and families in Pennsylvania.

PENNSYLVANIA RESOURCES COUNCIL, INC.

\$20,000 to support an educational program focused on water quality where students conduct hands-on experiments to assess the health of a local stream.

PETTAWAY PURSUIT FOUNDATION

\$25,000 to support the prenatal, delivery and postpartum doula program serving pregnant people in Delaware County.

SUPPORT CENTER FOR CHILD ADVOCATES

\$5,000 to provide training for child-serving professionals. Training topics include trauma, stress/burnout, mindfulness/self-care, and educational/behavioral health advocacy.

THE CHESTER CHILDREN'S CHORUS

\$75,000 over three years to provide year-round music and academic support for Chester youth.

THE CHESTER CULTURAL ARTS AND TECHNOLOGY CENTER

\$18,000 to support trauma-informed primary prevention programming for youth aged 5-18 in Delaware County.

UPPER CHICHESTER LIBRARY

\$7,000 to support the Upper Chichester Library Reading & STEM Summer 2022 Program for preschoolers through 12th grade.

UPPER DARBY ARTS & EDUCATION FOUNDATION (UDAEF)

\$20,000 to build UDAEF's capacity to enrich children's educational experience in the Upper Darby School District.

WIDENER UNIVERSITY

\$5,000 to support the Widener Child Therapy Clinic.

YOUNG MEN AND WOMEN IN CHARGE (YMWIC) FOUNDATION INC.

\$20,000 to prepare youth in Delaware County to excel and become leaders in STEM careers.

Community and Economic Development

CHESTER COMMUNITY IMPROVEMENT PROJECT

\$30,000 to support a pre-development assessment of vacant parcels of land for new homes in Chester.

DELAWARE COUNTY HISTORICAL SOCIETY

\$25,000 to support accessible research and inclusive technology programming.

HISTORIC LANSLOWNE THEATER CORPORATION

\$50,000 to support the restoration and reopening of the 1927 Lansdowne Theater. (Funding with thanks to the Lillian H. Griffin Fund in memory of Lillian H. Griffin.)

LANSLOWNE ECONOMIC DEVELOPMENT CORP. (LEDC)

\$60,000 over two years to foster economic development in Lansdowne through the support of the Utility Works MakerSpace and Penn State Brandywine LaunchBox.

NATURAL LANDS

\$40,000 over two years to support Darby Creek Watershed's community engagement program that advances climate initiatives.

PENN STATE BRANDYWINE

\$30,000 over two years to support The Idea Test Lab, which provides entrepreneurship-focused academic programs, business startup training/incubation, and industry mentors.

RIVERFRONT ALLIANCE OF DELAWARE COUNTY

\$50,000 over two years to support Chester Riverfront Development.

Hospice and Home Healthcare

Funding with thanks to the Delaware County Home Care Association Fund of the Philadelphia Foundation.

MAIN LINE HEALTH HOMECARE & HOSPICE

\$25,000 to support and improve access to hospice and home care services for low-income residents in Delaware County.

SURREY SERVICES

\$41,000 to support a comprehensive approach that enables seniors to age in place.

Food Security

CHESTER HOUSING INITIATIVE, INC.

\$40,000 for the Ruth Bennett Community Farm to support access to nutrient-dense produce for children and families in Chester.

CITYTEAM

\$20,000 to support CityTeam's efforts to strengthen food security in Chester.

COMMUNITY ACTION AGENCY OF DELAWARE COUNTY, INC.

\$5,000 to support Community Action Agency's efforts in improving food security for people experiencing homelessness in Delaware County.

JOHN J. TYLER ARBORETUM

\$11,500 to increase food security in Delaware County.

NEIGHBOR TO NEIGHBOR COMMUNITY DEVELOPMENT CORPORATION

\$10,000 to support food security for residents in the Sharon Hill and Darby Township area.

PHILABUNDANCE

\$20,000 to support produce and meal-kit distribution and strengthen food security in partnership with Murphy's Giving Market and Chester High School.

SENIOR COMMUNITY SERVICES

\$50,000 to support food security among elderly people in Delaware County by providing home-delivered meals. (Funding with thanks to the Delaware County Home Care Association Fund of the Philadelphia Foundation.)

SHARE FOOD PROGRAM

\$100,000 to establish Delaware County's centralized food bank and promote equitable food access across Delaware County.

THE SALVATION ARMY

\$15,000 to increase food security for the Chester Food Program.

Services for Cancer Survivors

BRINGING HOPE HOME

\$15,000 to provide Delaware County families impacted by cancer with financial and emotional support.

HEADSTRONG FOUNDATION

\$7,500 to provide social and financial support to newly diagnosed pediatric cancer patients and their families.

Second-Year Payments to 2021 Impact Grantees

CASA YOUTH ADVOCATES, INC.

\$62,300 for Voices for Children, a collective impact campaign using data-driven advocacy and awareness to advance child well-being in Delaware County.

CHESTER COMMUNITY COALITION

\$28,975 to provide psychotherapy to teens impacted by violence and train high school students in Teen Mental Health First Aid.

CHESTER EDUCATION FOUNDATION

\$40,000 for the Jetter Center for College and Career Services in Chester.

CHESPENN HEALTH SERVICES

\$60,000 to provide comprehensive primary and preventive healthcare to children in Delaware County.

CHILDREN FIRST PA

\$40,000 to support lead poisoning prevention and the Justice in Education advocacy training program in Delaware County.

COLLEGE POSSIBLE PHILADELPHIA

\$35,000 to support high school juniors and seniors from the William Penn School District and Upper Darby School District with college access services.

DREXEL NEUMANN ACADEMY

\$25,000 for reading, math, and in-house counseling support.

ELWYN

\$38,160 to build the capacity of early childhood programs in Chester by improving the social-emotional and academic kindergarten readiness skills of all learners.

EPISCOPAL COMMUNITY SERVICES (ECS)

\$20,000 for their Out of School Time program at Park Lane Elementary School in Darby.

FAMILY SUPPORT LINE OF DELAWARE COUNTY, INC.

\$20,000 to support their mission to prevent and treat victims of childhood sexual abuse.

FIRST UP

\$40,000 to promote trauma awareness among early childhood educators and train educators and families in trauma-informed practices to improve childhood outcomes.

THE FOUNDATION'S
PUBLIC HEALTH
PROGRAMS HAVE
A LONG HISTORY OF
“STANDING IN THE
GAP” WHEN FAMILIES
STRUGGLE TO
ACCESS SERVICES

WOMEN, INFANTS, AND CHILDREN SUPPLEMENTAL NUTRITION PROGRAM (WIC)

The WIC program safeguards the health of low-income women, infants, and children up to age five who are at risk of poor nutrition by providing supplemental food, nutrition education and healthcare referrals. During the formula shortage, the Delaware County WIC program was a beacon of hope for families. For new moms and dads often working long hours, traveling to two or more stores to find formula was a heavy added burden.

The WIC team regularly updated our families and community with which stores had which brands and types of formula available at any given time. They also supplied nutritionally sound guidance to help families manage through the shortage. Our call center staff offered support to anxious moms and parents, while breastfeeding counselors provided encouragement and information to parents focused on breastfeeding or pumping.

Our public health programs serve more than 10,000 Delaware County residents each year and are nationally recognized for innovation and improving health outcomes. Our team tackles some of the most pressing disparities in maternal, infant, and family health by combining coordinated care with interventions that target the social and environmental determinants of health. When expectant families connect with our programs, they can access case managers, community health workers, nurses, registered dietitians, and nutritionists, as well as civil legal attorneys, housing experts, and social workers.



“Nurse-Family Partnership gave me the support I needed to navigate my first pregnancy as a single parent. It not only prepared me for the welcoming of my child, but it gave me the resources I needed to take care of my mental health before and after my pregnancy. My nurse became my #1 supporter, and I no longer felt alone during this major life change.

My nurse made sure I always had essentials such as diapers and milk. My therapist helped me with postpartum depression and PTSD. I didn't believe I was able to be a good single mother, but my nurse, Grace, gave me hope and allowed me to fall in love with my pregnancy, understand the process, and work on the areas I'm not so good at.

I write this with tears in my eyes because of the amount of love, positivity, and support I received through this program. It has marked my life forever.”

–Christina, Nurse-Family Partnership client

HEALTHY START AND NURSE-FAMILY PARTNERSHIP

Our Healthy Start case managers and Nurse-Family Partnership nurse home visitors work with expectant parents to ensure healthy pregnancies and full-term babies, support breastfeeding and infant care, and provide parenting and child development education. As our clients’ needs grow, our programs evolve to meet them. These programs can connect moms, dads, and partners with services such as counseling, civil legal advice, and mental health support. Recently, the Healthy Start program added a doula program that will provide 72 women in the Chester area with doula services during and after labor.

The Foundation facilitates collaborations to not only address the immediate needs of our county, but also to think strategically about systems change. In 2022, we collaborated with key community partners to create an Infant Health Equity plan. The group convened 25 key stakeholders — including Healthy Start parents and staff, community partners, county representatives, state-level partners, and policy experts. The goal was to identify and put in place measures to improve birthing experiences and outcomes and reduce racial disparities in infant and maternal mortality and morbidity. The result was a five-year plan called CARE: Community-centered Access to Resources and Economic Supports.

ALL FAMILIES DESERVE TO LIVE IN SAFE AND HEALTHY HOMES

The populations our public health programs serve are among the most vulnerable in Delaware County. All are low-income, and many are girls and women of color, families with children, and domestic violence victims, who suffer disproportionately from housing insecurity.

Evidence shows that housing issues like eviction are not just a condition of poverty but also a cause. Housing insecurity creates instability not only for individuals but also for schools and communities. It impacts people’s job prospects and mental and physical health. Families facing housing insecurity are less likely to have enough food, invest in their children’s education, and seek medical care.

“My prior home was in the middle of drug activity, and my bedroom window was shattered during an accidental shooting.

It wasn’t safe for me and my three children; my kids could never hang out in the backyard. I received a housing voucher from HOPE, which was a lifesaver. Without the voucher, I would have had to stay in my prior home because I couldn’t afford to move. The voucher gave me the opportunity to move to a neighborhood that is safer and healthier for my family. My kids don’t get sick as much. They were suffering from respiratory infections due to mold in the house. In our new home, we feel safe and healthy, and my neighbors know me and support me.”*

*Vouchers offer an affordable rate of rent each month so the client can put money toward other expenses.

In 2021, the Foundation created the HOPE program to address the barriers to healthy housing. Through comprehensive direct services and broader advocacy and collective action, HOPE provides immediate financial relief and case management services for clients in our public health programs.

Together with donations and grants from the business community and state and local government, HOPE addresses housing insecurity, helping to keep at-risk families in their homes and advocating for widespread housing reform.



Keshla Cruz, mom of three, HOPE client and former Nurse-Family Partnership and Healthy Start client

NONPROFITS CAN HELP BUILD HEALTHIER, MORE ROBUST COMMUNITIES BUT THEY NEED SUPPORT

We have long recognized that strong nonprofit leadership is key to community progress and enhancement. To help nonprofit leaders build sustainable organizations that serve their communities effectively, the Foundation launched The Center for Nonprofit Excellence (CNEx) in 2020. The CNEx offers a range of professional development opportunities for leaders, staff, board members, and prospective board members. These include board development; diversity, equity, and inclusion training; educational workshops and programs; and peer learning networks.

Last year, the Foundation launched an endowment-building program for Delaware County nonprofits. Participating nonprofits that established an endowed fund with the Foundation were given a 1:5 match for



Thank you to Youth Development United/Chester-Upland Youth Soccer, CASA, Family and Community Services, and Senior Community Services for establishing endowment funds with the Foundation in celebration of its 5th anniversary.

that fund. For many organizations, an endowment is a philanthropic keystone, a long-term investment earning interest that can provide steady revenue to help organizations weather the ups and downs of other funding sources.



Nonprofit endowed funds can be started by nonprofits, groups, or individuals who want to see that organization and its mission live on forever.

A GUIDE TO GOOD

You can turn a life event — selling a business, receiving an inheritance, retiring, or owning appreciated stocks — into an opportunity to do good. **Donors to the Foundation come from many different walks of life, professions, and backgrounds, yet they all aspire to become part of something bigger than themselves. They have committed to providing for this community today and into the future.**

THE POWER OF A COMMUNITY ENDOWMENT

HOW AN ENDOWMENT WORKS

An endowed gift is made and invested for long-term growth. A portion of the fund is distributed to charitable interests annually, forever. Meanwhile, the remaining fund balance continues to grow.



\$100,000
your gift
today



\$104,895
grants you award
over 20 years



\$110,489
your fund balance
in 20 years

A FUTURE WE CAN DREAM A FUTURE THAT IS GOOD

START A CHARITABLE FUND

We offer a range of funds that can be tailored to your needs, your charitable interests, your impact timeline, and your desired degree of involvement. You can:

1. **Give to an existing fund** that addresses specific areas of interest or to an unrestricted fund that gives us the flexibility to address our community's most pressing needs.
2. **Establish your own fund** in your name or the name of someone you wish to honor, similar to a family foundation, but without the paper-work and expense.

DONOR-DIRECTED FUNDS

Donor-Advised Funds: Individuals, families, and corporations use these funds to make grants to their favorite charitable organizations. Advised funds are efficient alternatives to private foundations; they may involve next generations or be endowed for perpetual giving.

Designated Funds: A donor designates specific charitable organizations as the perpetual recipients of the income from the fund.

Legacy Funds: A donor designates a gift through a will, trust, retirement assets, or other means.

COMPETITIVE FUNDS

Nonprofits/individuals go through a formal application process for the following:

Field of Interest Funds: Individuals and organizations may pool their charitable gifts of any size into a common fund that addresses an issue of importance to them and the community.

Scholarship Funds: A donor can establish a fund to benefit students at any education level, in a certain specialty, or for a specific institution. A fund can be established to honor a loved one.

Unrestricted Funds: Through unrestricted funds, donors enable the Foundation to respond to the community's most pressing challenges creatively and flexibly. These funds provide some of the Foundation's most important resources to address the community's ever-changing needs.

THANK YOU TO OUR SUPPORTERS

Foundations

American Online Giving Foundation
Charities Aid Foundation America
Dale L. Reese Foundation
Delaware County Home Care Association Fund of the Philadelphia Foundation
Elwyn Foundation*
Ethel Sergeant Clark Smith Memorial Fund
Give Lively Foundation
Independence Blue Cross Foundation
Merck Foundation
Nathan Speare Foundation*
The Philadelphia Foundation
PNC Foundation
Riddle Healthcare Foundation*
The Scholler Foundation
Tally Foundation
TD Charitable Foundation
Terryglass Foundation
William Penn Foundation Special Gifts Program
WSFS CARES Foundation*
Zidek Family Foundation

Organizations and Businesses

American Academy of Pediatrics - PA Chapter
AmeriHealth Caritas Family of Companies
Aqua, an Essential Utilities Company*
Bank of America
Barbacane Thornton & Company*
The Blackbaud Giving Fund
The Boeing Company*
Bradley & Bradley Associates, Inc.*
Brent Celek Real Estate
Brinker Simpson & Co., LLC*

CADES*

Charles Cross Architecture, P.C.
Chester Housing Authority*
Child Guidance Resource Centers*
CliftonLarsonAllen LLP*
Comcast Corporation*
Community YMCA of Eastern Delaware County*
Crozer Health*
CyberGrants, LLC
DCIU Hearing and Language Program Staff
Delaware County Community College*
Drexel Agency, Inc.*
Drexel Neumann Academy*
Eleanor J. Roth Charitable Trust
The Employees Community Fund of Boeing
Fizzano Family of Associates, Realtors
Frank W. Daly & Associates, Inc.
Franklin Mint Federal Credit Union*
Gallagher*
Harrah's Philadelphia Casino & Racetrack*
The Harrison Group
Hatzel & Buehler, Inc.
The Haverford Trust Company*
HDE Management Group, LLC
Health Partners Plan*
Independence Blue Cross*
KDI Office Technology
KeyBank
Keystone First*
Laborers' Local 413*
Lamb McErlane, P.C.*
LEM Capital, L.P.
LF Driscoll Co.*
The Magnolia Fund
Main Line TeleCommunications

Media Real Estate
The Medical Staff of Crozer Chester Medical Center, Taylor Hospital and Springfield Hospital*
Meridian Bank
Multicultural Community Family Services*
National Board of Medical Examiners Network for Good
Neumann University*
NJM Insurance Group*
Pagano Funeral Home
Park Power
Patriot Financial Partners, L.P.
PayPal Giving Fund
PECO, an Exelon Company*
PFM Asset Management, LLC*
Philadelphia Union
P.J. Dick, Inc.
PNC Bank*
Post & Post LLC*
Power Home Remodeling Group
Public Health Management Corporation*
Radnor Financial Advisors*
Reliable Computer Solutions & More*
Salesforce.com, Inc.*
Schultz & Williams*
Share Food Program
SSH Real Estate
Stillwater Capital Advisors, LLC
Suburban Fence Company
TD Bank, N.A.*
Tomorrow's Utilities Inc.
Treasurer of Delaware County
United Way of Greater Philadelphia and Southern New Jersey
United Way of Greater St. Louis
Visit Delco*
Wallingford Presbyterian Church
Walsh & Nicholson Financial Group
Wells Fargo Bank
WHYY, Inc.*
Widener University*
Women's Club of Media
Wright Partners, LLC
WSFS Bank

Individuals

Anonymous -10
Walter Abele, III
Dr. Michael Adesman and Dr. Susan Weil*

William Adolph, Jr.
Karen and Mark Aigeldinger
Richard Ailes and Shirley Dobson
Charles Allen
Nicholas and Shelly Aponte
Kristina Austlid
Pamela W. Baker
Rob and Michele Barbacane
Dr. Marina Barnett
Suzanne and Tom Barton
Sheila Bell
Tom and Beth Belmont*
Andrew and Rachel Berry
Amy Bessler
Catherine Bittle*
L. Joy Gates Black, Ed.D. and Dillet Black*
David and Jennifer Bloom
Joanne Blythe
Corliss and Clayton Boggs*
Michael Boschi
Thurman Brendlinger and Dr. Lisa O'Mahony
Carol and Robert Briselli
Gregory Brown and Linton Stables*
Philip H. Brown, II, CFA
Rick and Rosemary Browne
Robert J. Bruce
Scott and Gigi Bruce*
Harry and Martha Bryans*
Steven and Heidi Burman
Annette Bushman
Catherine Judge Cardillo
Margaret and Jerry Carpenter
Susan Cherner, Esq.
Eleanor Clark
Bill and Mary Clinton
Cliff and Donna Cohen*
Jane and Josh Cohen
Marion Cohen
Eileen Courtney
Barbara Craig and Matthew Kremer
Brian M. Crimmins*
Philip and Karin Damiani
Nicholas and Eileen DeBenedictis
Laura and Vincent DeFlavia
James Delizzio
Donald and Cordelia Delson
Drs. Sara and Christopher DeMauro*
Drs. Cynthia and Bruce Dembofsky
Denise L. Devine

Catherine D'Ignazio and Tom Mandel
James Dilulio
Carmela Dindor
Robert DiPietro
Cyrise L. Dixon*
Dr. Eric and Ceil Dobkin
Susanne and Dennis Donovan
Kevin Dow and Kim Fraites
Robert and Christine Dumont
Carol and Daniel DuPont, D.O.
James R. Edenfield
Steven and Gloria Ellers
Melinda Emerson
Ursula Erb
Mary and Lance Donaldson Evans
Ron Evans
Ann Falkie
Debbie and John Federico
Joel Fein and Vicky Levin
Emily Feinzig
Robert E. Fenza
Bruce and Nancy Fischer
JoAnn Flounders, MSN, CRNP
David and Brittany Forman
Matthew Frey
Denise and Dennis Fulvio

OUR FOUNDERS HAD A VISION OUR DONORS LEAVE A LEGACY

Scott and Linda Garrett
Susan Garrison, Esq.*
Grant Gegwich and Elizabeth Romaine*
Marian Genkin
Brian George
Robert H. Gerlach
Rick Gillen
Anthony Goldsmith
Shoshanna Gottlieb and Ronen Marmorstein
Melissa Graf-Evans and Jonathan Evans
The Estate of Lillian H. Griffin
Ellen and Robert Grill
John and Gail Groso
Benjamin and Trisha Hall, Esq.
Ellen and Ed Hanway*
Sara and Howard Harris

DONOR SPOTLIGHT

We have worked hard to instill an ethos of giving back in our family.

With our three children, we've served in food kitchens in Philadelphia, worked for Habitat for Humanity, mentored students at Radnor ABC, been part of many MLK Day service projects, and financially supported many worthy causes.

Through our donor-advised fund at The Foundation for Delaware County, we have involved our children Krista, Matthew, and Katie (now in their 20's and early 30's) in philanthropy. The Foundation worked with our family to discover our charitable priorities. As a family, we decided to support efforts to help underserved communities with food insecurity, education, families with medical challenges, and to help with climate change efforts. Each year, our children have a certain amount of money from the fund that they direct towards local, national, and international organizations supporting our family's philanthropic goals. As part of the process, the kids research and select the nonprofits and decide how to divide the funding.

We have been incredibly impressed with the knowledge the Foundation has offered us in helping us direct our gifts. During Covid, the Foundation connected us with organizations providing critical services to local communities that we would never have been aware of on our own. One of the organizations they introduced us to is Chester Charter Scholars Academy (CCSA). We have been so impressed by CCSA that Dave joined the board and is tutoring students.

The Foundation makes it easy to direct gifts to local and national nonprofits while also handling the fund's administration so we can focus more on visiting the organizations we support. The Foundation is a great fit for our family.

Cindy and Dave Pelton



“I have been handling the distribution of an estate for a client who was very charity minded and supported many causes such as the environment, animal welfare, veterans' affairs, and hunger relief. I turned to The Foundation for Delaware County to help me identify local organizations that are making an impact in these areas.

I enthusiastically recommend The Foundation for Delaware County because the staff makes it simple for people with charitable intent to invest in our county, and better yet, they do the legwork. Instead of researching organizations and writing a dozen checks to different organizations every year, I direct distribution of my client's gifts from the Foundation's fund and the staff help me find where her gifts are needed most. In addition, I am able to meet with a philanthropic advisor each year to ensure that my client's charitable goals are being met."

–Kristine Hughey, Partner, Speare and Hughey

George and Loretta Hassel*
Christopher and Patricia Hegarty
Marcia and John Hiehle, M.D.
Dr. Gregory and Diane Hillyard*
Dr. Annemarie and Andy Hirsch*
Jill and Michael Hollenbach
Kristine Hughey, Esq. and
Richard Hughey, Esq.*
Bruce Hunt and Kathryn Mehan
Nancy and Walter Hunter
Dr. James and Joan Husted
Chad Hydro
C. Andrew Jones
Rabbi Louis Kaplan
Dr. Richard and Bonnie Kaplan*
Drs. Steven and Lauren Katz*
Frederic and Wendy Kauffman
The Honorable Timothy Kearney*
The Honorable Kevin F. Kelly
Judith Kinman
The Honorable Stephanie Klein and
David Landau, Esq.
Richard and Judith Knight
Andrea Knox and Jonathan Hodgson
Joanne and Joel Krackow, M.D.
Lauren Krenzel and Michael Speirs, M.D.

Susan Goldberg and Jonathan Krinick
Carol Kroch
The Honorable Deborah Krull and
David Krull
Nancy Kyle
Frances and Joseph Lastowka, Esq.
Stephen Lehmann and Carol Sabersky
Katy Lichtenstein
Robert and Sandra Lichtenstein
Dr. Andrea Liu
Sandy and Bruce Lutz, M.D.*
James and Maria Lynch
Michael and Sofia Magnavita*
Joyce and Richard Malamut, M.D.
Sara Marcq
Jennifer Marino
Lori Markusfeld and Jeffrey Cole
Nicholas Matlin
Michael and Kristy Mattise*
Dr. Julia Mayer and Dr. Barry Jacobs
Dennis C. McAndrews, Esq.
Joanne and Gary McFall
Katherine McKinstry and Marc Badger
Charles and Elizabeth McLister
Martin and Deb Meenan

Gerald Miller and Lois Frischling
Joe Miller and Suzanne de Seife*
Mr. Stacey Mobley and Dr. Joan Mobley
Jeannine and Eleazar Morris, M.D.
Susan Sisler Morrison and
Chris Morrison
Nancy and Gordon Mott*
Theresa Murdock
Marie Natoli
Mary Ella and Richard Nenno
Daniel and Kimberly Nesbitt
Jeremey Newberg
Cheryl and Nathaniel Nichols, Esq.*
Patrick R. Nolen
Raymond J. Nolen, III
Patricia O'Donnell
Ellen and Pete Oetinger
Dr. Donald Oken
Edward and Jordan Oliver
Dr. Joseph and Marilyn Pappano
Matt Parker
Susan Parker*
Dr. Homayoon Pasdar and
Cheryl Riley Pasdar
Rachel Pastan and David Cohen
Kathleen Paul
Mary and Christopher Peifer, Esq.
Ted Peters*
Helen Davis Picher and Oliver Picher
The Honorable Dominic and
Diana Pileggi
Stephen Platt and Robin Schaufler
Amy and David Pollack*
Nancy Prindle*
Lynn Anne Procopio
Alan and Carol Prushan
Jeffrey Purdy
Susan Pursch*
Kate Ranalli and Andy Rudolph
Joan K. Richards*
Jordan Rodriguez
Dr. Justin Roe and Jacqueline Roe, Esq.
Dr. Cynthia Sacharok and Jeffrey Costa*
William Saffici
Linda and Joseph Scafiro
James and Gena Scanlan
Robert and Judith Schachner
Lisa and Gary Schildhorn
Frances Schultz
Jan and Don Semler

Frances M. Sheehan and
Ricardo Gelman, M.D.*
Stephanie Sher, Esq.
Thomas and Joanie Shoemaker
Susan and Harold Shreckengast
Dr. Julie Silverstein and Carlos Sacanell
Laura Sindoni and Angela Riccetti
Scott Smith
Larry and Linda Lee Smoose*
Dr. Harvey and Naomi Spector
Sonia Stamm
Stanley Stanilka
The Stesis Family
Frances Stier
Alice W. Strine, Esq. and
Walter Strine, Esq.*
Ann Swan
Andrew Szabo and Susan Long
JoAnne and Jeff Tarnoff
Kathy Taylor
Fred and Mary Jane Teitman
Virginia Thompson and Tom Shaffer
Kelly Thornton and Barker Davis*
Frank Tobin and Ilene Chester
Patricia Tokarczyk
Frances Vilella-Velez
Robert E. Vonsick
Jan Waldauer
David and Debbie Waxler
Arthur Weisfeld and Virginia Brabender
Gail Whitaker, Esq.
Dana and Jay Wiley
Karen Willcox
James R. Williams, Esq.
Paul Winnington
Kenneth Wochele, Jr.
Dr. Russell and Judy Young
Kate and Brian Zidek*

Funds and Scholarships
Albright Family Foundation
B.A.C. Cancer Transportation Fund
Boggs Family Fund
Burn Care Funds
Cancer Care Funds
Chairman's Fund
Estate of Frances Dunn Cherry
Children's Asthma Fund
Catherine F. Corson Fund
Cribs for Kids
Crozer-Chester Hospitals Medical
Staff Fund

Crozer-Chester Medical Center
Continuing Medical Education Fund
Deerbrook Boys and Girls Club of
Chester Designated Fund
Deerbrook Chester County Food
Bank Designated Fund
Deerbrook City Team, Chester
Designated Fund
Delaware County Memorial Hospital
Medical Staff Fund I
Delaware County Memorial Hospital
Medical Staff Fund II
Delaware County Public Health Fund
Delco Greater Good Fund
Margaret M. & Frederick J. Dougherty
Education Fund
Emergency Medicine Resident
Support Fund
Erb Trust
Family Medicine Residency Support
Fund
Fund for Food Security
Patrick & Jean Gavin Fund for Youth
Development in Chester
Gelman-Sheehan Fund
Lillian H. Griffin Fund
James Hayes Memorial Fund
Hospice and Home Care Fund
Harry and Mary LeFever Family Fund
Betty Speare Loughead Fund
Malibu Fund
Mattise Family Charitable Fund
Eva Miller Nursing Scholarship Fund
Musical Performance Arts and
Education Fund
Parton Dourlet Family Fund
Jenny Ann Parton Scholarship Fund
Passport to Health - DCRCC
Philadelphia Cyberknife Medical &
Scientific Research
President's Fund
Susan Reiley Memorial Foundation
Ride Hard Breathe Easy
Alice and Walter Strine Fund
Strine Musical Performance Fund
Louis and Margaret Sudhop
Charitable Fund
Radiology - Kevin Tighe Memorial Fund
Turtle and Owl Fund
Thomas "Wolfie" Wolfarth EMS
Training Fund
Wolters' Giving Fund

Women Helping Women With Cancer
Fund
Debby Yoder Fund
Nonprofit Management Services
Chester Partnership for Safe
Neighborhoods
Circle of Giving 2020
Library Foundation of Delaware County,
Pennsylvania
Refugee School Supplies
Transformative Language Arts Network
Yeadon Community Coalition
Young Entrepreneurs Academy
Nonprofit Endowment Funds
CASA Youth Advocates Children's
Futures Fund
Chester Upland Youth Soccer
Maria Shelmire Endowment for Family
and Community Service of Delaware
County
Senior Community Services
Government Grants
Federal Government
U.S. Department of Health and Human
Services:
Health Resources and Services
Administration, Maternal and Child
Health Bureau, Division of Healthy
Start and Perinatal Services -
Healthy Start
Substance Abuse and Mental Health
Services Administration (SAMHSA) -
STOP ACT
State Government
Pennsylvania Department of Health,
Bureau of Women, Infants and Children:
Pennsylvania Special Supplemental
Nutrition Program for Women, Infants
and Children – WIC
Pennsylvania Department of
Agriculture:
WIC Farmers' Market Nutrition
Program
Pennsylvania Departments of
Education and Human Services, Office
of Child Development and Early
Learning (OCDEL):
Nurse-Family Partnership
Maternal, Infant, and Early
Childhood Home Visiting Program

Pennsylvania Department of
Community and Economic
Development:
Neighborhood Assistance Program –
Tax Credit Program
COVID-19 ARPA Pandemic Response
Pennsylvania Department of Drug and
Alcohol Programs:
Pregnancy and Postpartum
Substance Use Disorder Support
Services
Pennsylvania Department
of Human Services:
State Legislative Initiative Grant
Health Program Assistance and
Services Program
County Government
County of Delaware:
Community Development Block
Grant - CV Program
We Are Grateful for
Gifts in Honor of:
Aesthetic Dermatology Associates
Scarlett Bonfiglio
Robert J. Bruce
DCIU Hearing and Language Program
Staff
Anne Donnelly, M.D.
Ellen Fisher
Caryn Mirriam-Goldberg
Amy Graham
Kim Kavadias
Katie Kenyon
Frances M. Sheehan
Robert N. Speare, Esq.
Adam Taxin
TFDC Leadership Team

We Are Grateful for
Gifts in Memory of:
Anthony Arena
Larry Armstrong
Philip Atwood
Richard Barclift
Gloria Barry
Lewis Beatty, Jr.
Mary Belfiglio
Bill Biesty
Bud Bostwick
Elizabeth Bradford
David Cassell

Rosemary Cassidy
Marion Castiglioni
Michael Connelly
Margaret Regina Conroy
Geraldine Crawford
Rita DelViscio
John Devlin
Frederick Dougherty
William Edenfield
Barbara Ellis
Marion Faber
Samuel Fisher
Lillian Griffin
Carol Grogan
Harold Haft, MD
James Hayes
Steve Jennings
Madeline Lincoln
Bruce Lord
Andrew Vincent Lowry
Patricia Maier
Henry and Phylis Matteis
Dan Murphy
Erica Lynn Neikam
Janet Novosel
Jerome Parker
Stephen Pisano
Myron and Phoebe Resnick
Shirley Richman
Donald Rozier
Eleanor Tyndall
Tony Verna
Marlene Werts
Robert and Marie Wilkinson
Judy Wallgren
Grace Winslow

*5th Anniversary Donors

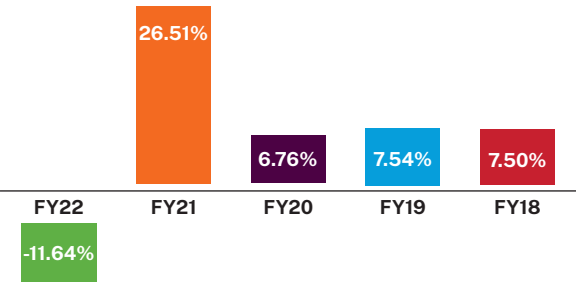
OUR CHILDREN'S FUTURE
IS IN OUR HANDS

Financials

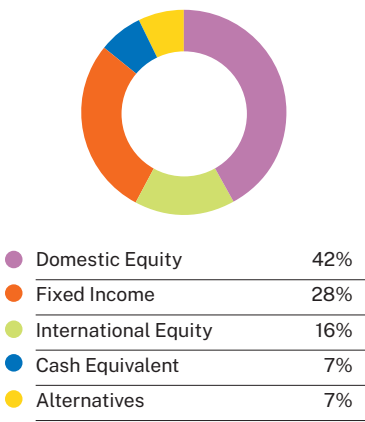
INVESTMENT PERFORMANCE

The growth of the Foundation’s assets comes from a combination of new contributions received and investment performance. The Foundation’s Investment Subcommittee, with the assistance of professional investment consultants, PFM Asset Management LLC, is responsible for establishing the investment policy and continually monitoring the performance of the Foundation’s investments. Full financial statements and 990 IRS tax filings can be found at www.delcofoundation.org

INVESTMENT PERFORMANCE



ASSET ALLOCATIONS FY22



INCOME FY22

Grants From Government Agencies	\$5,005,020
Contributions From Public	\$3,972,899
Investment Income	-\$8,025,661
Changes in Value of Trusts	-\$398,426
Special Events	\$187,048
Miscellaneous Income	\$267,914

EXPENSES FY22

Program Services	\$6,139,636
Grants, Scholarships Charitable Care	\$2,335,389
Administration	\$717,542
Development	\$398,067
Transition Costs	\$85,086

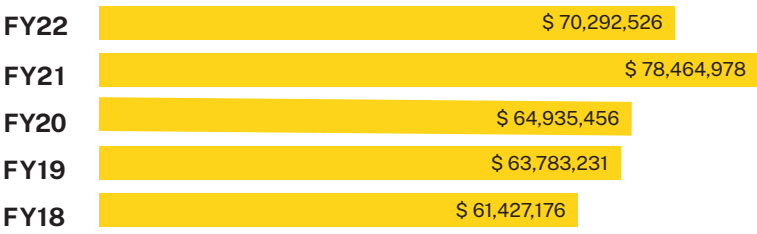
FINANCIAL HIGHLIGHTS

As of June 30, 2022, the Foundation’s consolidated assets totaled more than \$70.2M. The annual rate of return on investments is expected to be commensurate with the prevailing investment environment. The 2022 fiscal year saw volatile markets, slowed economic growth, and record inflation rates. As a result, the portfolio yielded a -11.64 percent return.

GROWTH

The following charts compare the total assets and contributions of the past five fiscal years for The Foundation for Delaware County for the fiscal year ending June 30th. Since its inception, the portfolio has returned 7.11 percent, outperforming the blended benchmark.

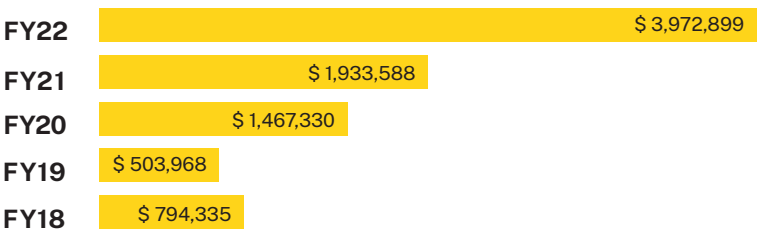
CONSOLIDATED ASSETS FY18-22



CONTRIBUTIONS

The Foundation for Delaware County’s work is made possible through the generosity of our donors. During the fiscal year, the Foundation received more than \$3.9M in contributions from the public. In addition, the Foundation received \$187,048 in net income from fundraising events.

CONSOLIDATED CONTRIBUTIONS FY18-22



THANK YOU BOARD & STAFF VOLUNTEER LEADERSHIP



Cyrise L. Dixon, Chair; The Honorable Dominic F. Pileggi, Immediate Past Chair; Frances M. Sheehan, President



Foundation staff at annual gathering

FY22/23 Board of Directors

Cyrise L. Dixon, Chair
Michael B. Magnavita, CPA, Vice Chair
Kelly Thornton, Secretary
Ted Peters, Treasurer
Michael B. Adesman, M.D.
Nicholas A. Aponte
L. Joy Gates Black, Ed.D.
Corliss Boggs
Robert J. Bruce
Donald W. Delson, Esq.
Daniel C. DuPont, D.O.
H. Edward Hanway
James N. Harper, Jr.
Michael N. Mattise, CFP
Mia I. Mendoza
The Honorable Dominic F. Pileggi
Joan K. Richards
Thomas J. Shoemaker*
Robert N. Speare, Esq.
Alice W. Strine, Esq.*
Malcolm J. Yates
Kate Zidek

Senior Staff

Frances M. Sheehan, President
Monika Collins, Vice President for Advancement and Philanthropic Services
Joanne D. Craig, Chief Impact Officer
Laura DeFlavia, Chief Financial Officer
Ellen Grill, Vice President for Advancement*

Advancement Committee

Robert N. Speare, Esq., Chair
Michael B. Adesman, M.D.
Nicholas A. Aponte
Cyrise L. Dixon*
Robert Dumont
Michele Garrity
Michael B. Magnavita, CPA*

Michael N. Mattise, CFP
Kelly Thornton*
Malcolm J. Yates

Gift Acceptance Subcommittee

Robert N. Speare, Esq., Chair
Monika Collins
Laura DeFlavia
Ted Peters

Audit Committee

Kelly Thornton, Chair
H. Edward Hanway
Michael B. Magnavita, CPA

Finance Committee

Ted Peters, Chair
Michael B. Adesman, M.D.*
Scott Bruce
Donald W. Delson, Esq.
H. Edward Hanway
Michael N. Mattise, CFP

Investment Subcommittee

H. Edward Hanway, Chair
Scott Bruce
Donald W. Delson, Esq.
Michael N. Mattise, CFP
Allison Mortensen
Ted Peters

Governance Committee

Daniel C. DuPont, D.O., Chair
L. Joy Gates Black, Ed.D.
Corliss Boggs
Robert J. Bruce*
Donald W. Delson, Esq.*
James N. Harper, Jr.
Mia I. Mendoza
Alice W. Strine, Esq.*

Grantmaking Committee

Corliss Boggs, Co-Chair
Robert J. Bruce, Co-Chair

Michael B. Adesman, M.D.
Nicholas A. Aponte
Michele Daly
Helen Davis Picher
Cyrise L. Dixon*
Vince Gordon*
Lydia Hammer
Nathaniel C. Nichols, Esq.
Thomas Parker
David Pollack, M.D.
Alice W. Strine, Esq.*
Kelly Thornton
Malcolm J. Yates
Kate Zidek

Program Subcommittee

Robert J. Bruce, Chair
Nicholas A. Aponte
Cyrise L. Dixon*
Lydia Hammer
Joan K. Richards

Planning Committee

Michael B. Magnavita, CPA, Chair
L. Joy Gates Black, Ed.D.
Steven Bradley
Robert J. Bruce*
Donald W. Delson, Esq.
Robert Dumont
H. Edward Hanway
Mia I. Mendoza
Joan K. Richards
Thomas A. Shoemaker*

Racial Equity Task Force

Malcolm J. Yates, Co-Chair
Akesha Gainer, Co-Chair
Nicholas A. Aponte
Corliss Boggs
Jordan Casey, Esq.
Joanne D. Craig*
Donald W. Delson*
Cyrise L. Dixon*

Ellen Grill*
James N. Harper, Jr.
Katy Lichtenstein
Michael B. Magnavita, CPA*
The Honorable Dominic F. Pileggi
Thomas A. Shoemaker*
Tracy Tucker
Kim Walker
Ifeoma Aduba, Facilitator

Golf Committee

H. Edward Hanway, Co-Chair
Robert N. Speare, Esq., Co-Chair
Robert M. Barbacane
Corliss Boggs
Andrew Brenner
Brian M. Crimmins
Melinda Emerson
Daniel C. Hagan
Kevin Hagenberg
Rocco P. Imperatrice, Esq.
Andrew McMenamin
Ann M. O’Keefe, Esq.
Frances M. Sheehan
Thomas A. Shoemaker*
John Spagnola
Robert F. Stiles

Professional Advisors Council

Edwin R. Boynton, Esq.
Betsy J. Joyce, CPA
Guy F. Matthews, Esq. CLU
Michael N. Mattise, CFP CFS CAIA
Cynthia A. McNicholas, Esq.
Tuan Nguyen
Christopher H. Peifer, Esq.
Laura N. Solomon, Esq.
Robert F. Stiles
Donna Stilwell, CPA CFE
Douglas A. Swope, CFP

*FY22 Member

FOR COMMUNITIES

We connect people, organizations, and ideas to address our county's biggest problems. And we're providing the capital to make that happen.

FOR NONPROFITS

We provide leadership training, education programs, fiscal management services, managed endowment funds, and grants to support their work in our communities.

FOR DONORS

We simplify the charitable giving process with straightforward fund establishment and charitable gift management.

FOR PROFESSIONAL ADVISORS

We partner with financial and legal advisors to help their clients incorporate philanthropic goals into their financial and estate plans.

www.delcofoundation.org

200 E. State St., Suite 304
Media, PA 19063



On the cover: Carol M. Highsmith, "Untitled Mural," City of Chester, 2019

