

THE
FOUNDATION FOR
DELAWARE
COUNTY



COVID-19 PANDEMIC RESPONSE



THE COVID-19 PANDEMIC

On Friday, March 13, 2020, we sent staff home from the foundation offices, telling them to expect to work virtually for a short time. A new coronavirus had begun circling the globe with disturbing results. We were concerned with protecting the health and safety of our staff and the people we serve.

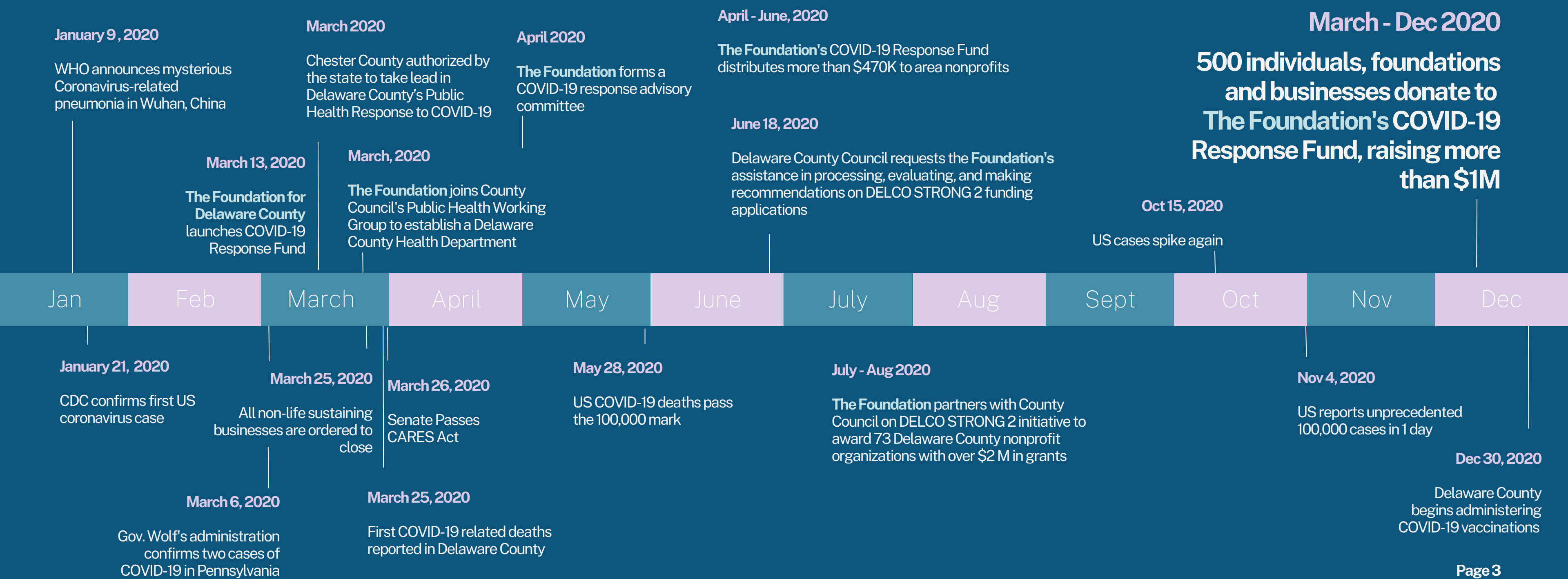
This past March, we marked the two-year anniversary of that day, with the foundation staff returning to the office this week. This pandemic has taken an enormous toll on all of us. Nearly one million people in our country have died from the COVID-19 virus to date, with almost 2,000 of those in Delaware County alone.

While the pandemic brought out a lot of emotions in us all - stress, fear, anger, anxiety, sadness - it also brought out the best in so many of us. Countless people stepped up to support their neighbors: providing food to hungry families, gratitude to our frontline workers, and comforting those grieving the loss of loved ones. 3,000 Delaware County residents volunteered at local vaccine sites. Below is a glimpse of how we at the foundation and others in our community responded to the COVID-19 pandemic.

A World in Crisis

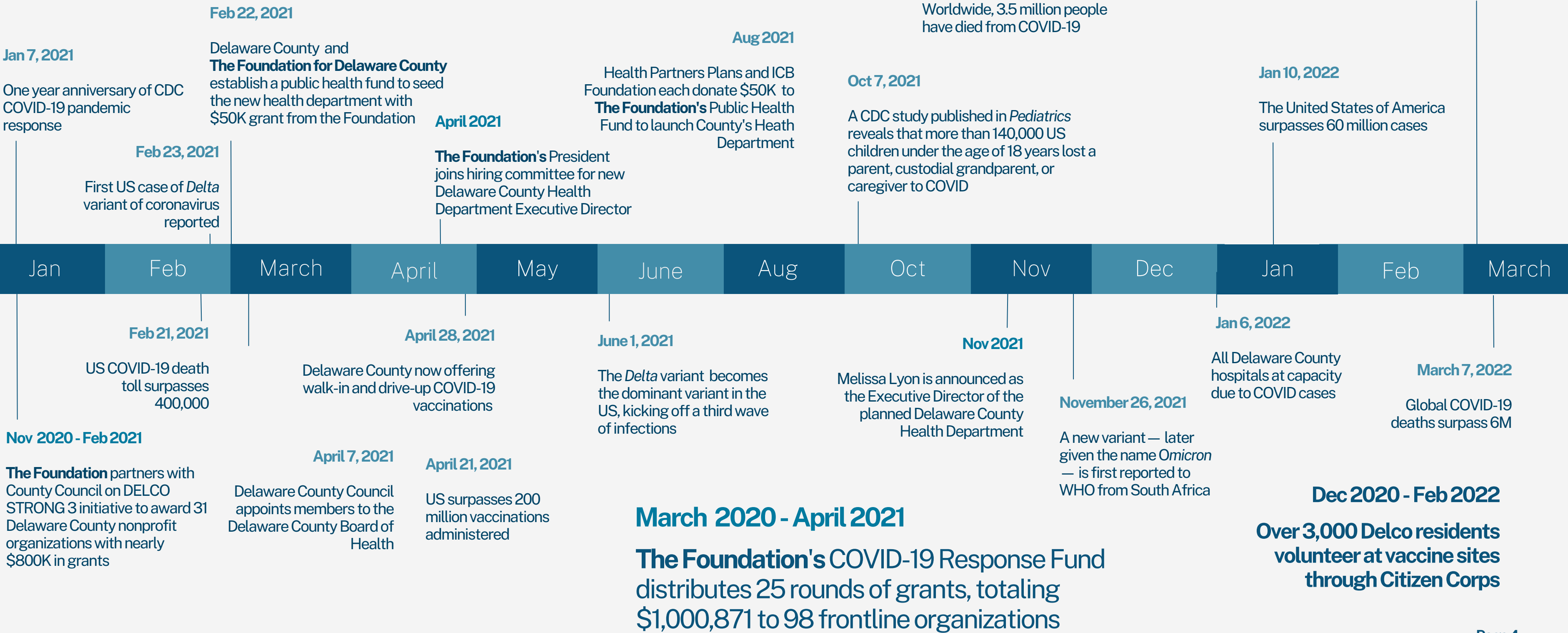
While the pandemic impacted so many of our vulnerable residents, it also showed us how powerful our community is in coming together to help those in need, neighbors caring for neighbors.

Frances M. Sheehan, President
The Foundation for Delaware County

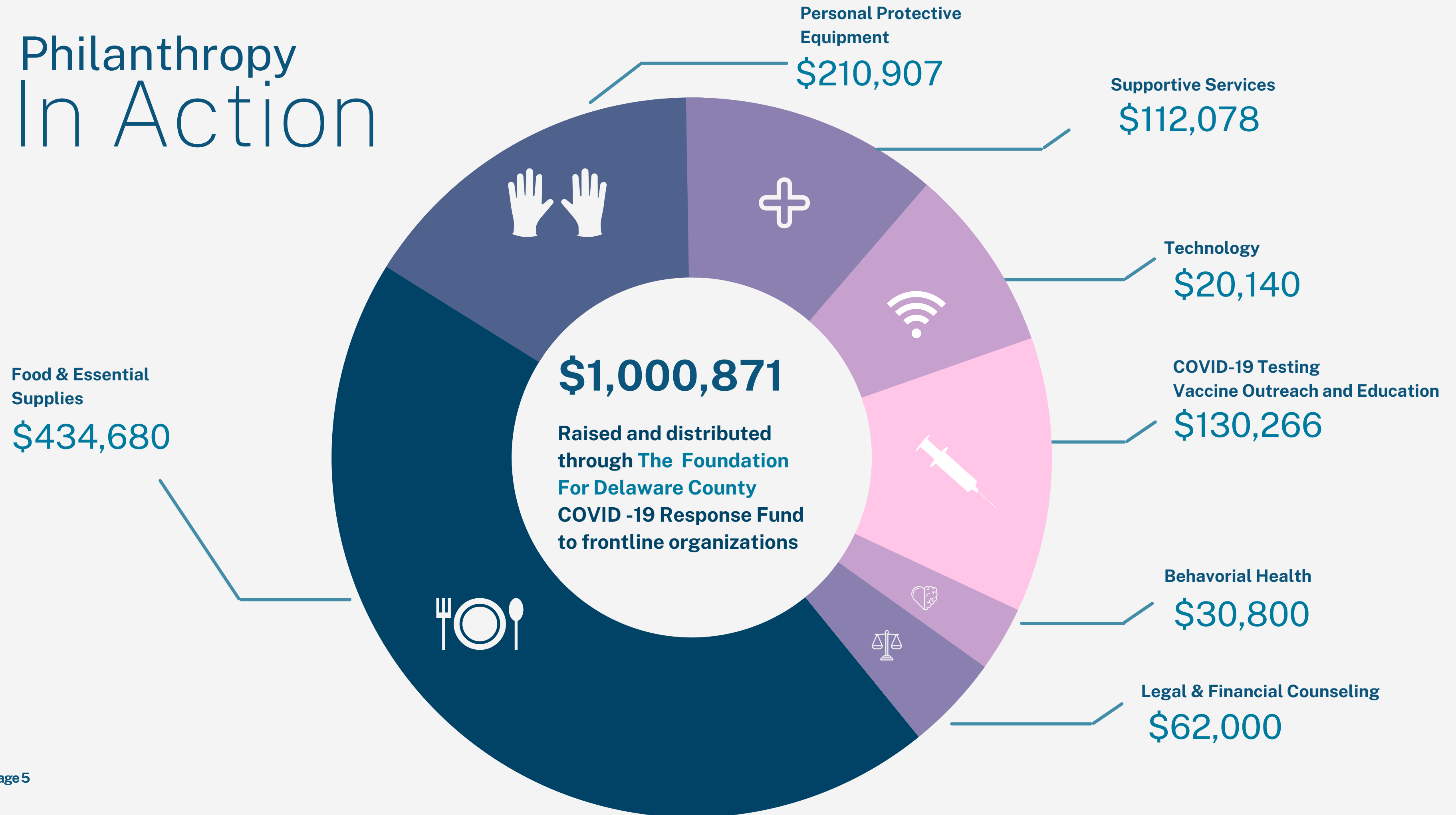


Our Community Stepped up to Help

March 3, 2022
The county celebrates Pennsylvania's approval of the new Delaware County Health Department



Philanthropy In Action



500 individuals, foundations and businesses gave more than



Food & Essential Supplies

Andrew L. Hicks, Jr. Foundation - \$10,000

Funds were used to provide boxes of produce and dairy products to Chester, Chester Township and Upland area residents.

Anna's Place - \$7,000

Anna's Place is located at the west end of Chester and meets the needs of people who struggle from poverty and mental illness in their community. Funds were used to purchase gift cards to grocery stores for seniors with housing insecurities and those suffering from mental illness.

Boys and Girls Club of Chester - \$11,905

Boys and Girls Club of Chester provides opportunities for the wholesome development of youth. Funds were used to provide gift cards to grocery stores for food-insecure families served by the club.

Breathing Room Foundation (BRF) - \$6,000

BRF cares and supports families affected by cancer. Funds were used to provide Delaware County cancer patients transportation to treatment, care packets (food or gift cards) and nutritional supplements.

Bringing Hope Home (BHH) - \$4,000

BHH provides local families with cancer with financial support, offering one-time subsidies to help pay essential household bills. Funds were used to provide Delaware County cancer patients with grocery store gift cards.

Bywood Community Association (BCA) - \$5,000

BCA focuses on community improvement and neighborhood development in Upper Darby. Funds were used to provide food and emergency supplies for the immigrant community in the Upper Darby area.

CASA Youth Advocates, Inc. - \$10,000

CASA serves abused and neglected children in Delaware County. Funds were used to purchase gift cards for groceries and emergency transportation, diapers, baby wipes and formula as well as cleaning supplies for CASA children.

Center for the Blind and Visually Impaired (CBVI) - \$5,000

CBVI helps individuals in the greater Delaware Valley area prevent, prepare for, and adapt to vision loss. Funds were used to provide transportation services for the blind and visually impaired that need help with grocery shopping, banking, prescriptions, and necessary medical appointments.

Centro de Apoyo Comunitario - \$4,750

Centro de Apoyo promotes the well-being of immigrants by providing assistance and developing leadership within the community to integrate, progress, and develop individuals and families culturally, economically, and socially. Funds were used to purchase and distribute food familiar to the immigrant population and provide grocery store gift cards for the immigrant population in the Upper Darby/ Darby/ Lansdowne Area.

Chester Arts and Cultural Center Corporation - \$47,800

Chester Arts and Cultural Center Corporation empowers and equips disadvantaged residents by providing cultural and technological resources. Funds were used to provide boxes of produce for distribution to Chester Housing Authority residents in need.

Chester Children's Chorus - \$12,500

Funds were used to provide food and grocery card cards in care packages for 100 children during their five-week virtual summer program.

Chester Eastside, Inc. (CEI) - \$7,000

CEI serves socio-disadvantaged children, youth, and families residing in Chester. Funds were used to purchase food and essential items to maintain service delivery for its pantry.

Circle of Giving - \$15,000

Circle of Giving's Weekly Meals & Giftcards program partnered with the Rose Tree Media School District to offer food support to designated families receiving free or reduced lunch. Funds were used to provide weekly meals & gift cards to support families in need.

\$1M to people in need in a time of crisis

CityTeam - \$10,000

CityTeam offers food, shelter, clothing, training, and spiritual support programs. Funds were used to distribute emergency food boxes, diapers, and formula to guests in need.

Community Options, Inc. - \$2,500

Community Options, Inc provides housing and employment opportunities for people with disabilities. Funds were used for food, cleaning supplies, and PPE to support individuals with intellectual and developmental disabilities.

Cradles to Crayons - \$5,000

Cradles to Crayons meets the basic needs of impoverished local children in Greater Philadelphia by providing them with the clothing, school supplies, and specialized equipment they need to thrive at home, school, and play. Funds were used to buy diapers, hygiene kits, school supplies, books, and other essentials for local children.

Drexel Neumann Academy (DNA) - \$20,000

DNA provided low-income families with food and essentials during the pandemic, as staff set up a makeshift food pantry in the gym. For families who could not get to school, staff delivered food and grocery cards to their homes.

Family and Community Service of Delaware County (FCSDC) - \$20,820

Funds were used to provide home delivery of food boxes to low-income households in the county.

Grace Court, Inc. - \$1,000

Grace Court, Inc. provides affordable housing to 100 elderly households in Yeadon. Funds were used for gift cards to grocery stores for low-income seniors and people who are disabled.

Greener Partners - \$5,000

Greener Partners gave bags of fresh fruits and vegetables and recipes to students and families at the Chester Charter Scholars Academy in Chester every week for five months.

Irish Immigration Center (IDC) - \$5,820

IDC offers a senior program that provides a free lunch for the elderly and immigration services, regardless of status or documentation. Funds were used to provide food and cleaning supplies for immigrants who are not eligible for government assistance.

Jewish Relief Agency (JRA) - \$5,000

JRA offers a monthly Food Distribution Program, to approximately 65 food-insecure homes. Funding was used for boxes of food and hygiene products delivered to food-insecure families living in Delaware County.

Keystone Human Services - \$1,500

Keystone Human Services is a part of a global movement to provide support and expertise to people with disabilities. Funding was used to purchase essential supplies to care for individuals with intellectual disabilities in one of eight dedicated homes in Delaware County.

Kisses For Kyle Foundation - \$5,000

Kisses for Kyle helps families battling childhood cancer. Funds were used to deliver food and essential supplies to food-insecure families in Chester.

Making a Change Group (MACG) - \$10,000

MACG is dedicated to empowering youth, strengthening families, and serving as a community connector in Chester. Funds were used to deliver food and essential supplies to food-insecure families in Chester.

Media Food Bank - \$15,000

Funds were used to purchase food and acquire the equipment necessary to help clients outside in cold weather, including heaters, tents, electrical connections, and supplies.



Food & Essential Supplies

Mercy Catholic Medical Center - \$10,000

Funds were used to purchase grocery store food cards for poor, homeless, and low-income individuals and families in Delaware County.

Metropolitan Area Neighborhood Nutrition Alliance (MANNA) - \$3,000

MANNA serves people who are at acute nutritional risk due to illness. Funds were used to provide regular deliveries for individuals with serious illnesses and have complex diets.

Mitzvah Circle - \$24,500

Mitzvah Circle serves individuals experiencing a crisis, serious illness, poverty, and homelessness. Funds were used to support their Diaper Bank in purchasing diapers, wipes, and soap for families living in Delaware County.

Multicultural Community Family Services (MCFS) - \$10,161

MCFS is a social services organization serving Upper Darby and the Greater Philadelphia Area. Funds were used to purchase culturally ethnic food and essentials items for seniors in need and purchase supplemental formula and wipes for families of young children.

Neighbor to Neighbor Comm. Dev. Corp. - \$5,000

Neighbor to Neighbor's food program delivers food to low-income residents to assist them in meeting basic nutritional needs. Funds were used for essential supplies and food for low-income residents in the Sharon Hill and Darby Township area.

Nutritional Development Services (NDS) - \$12,924

NDS feeds children and those in need by connecting them with resources. Funds were used to provide shelf-stable food to food cupboards and outreach centers in Delaware County.

Philabundance - \$5,000

Philabundance is the Delaware Valley's largest foodbank. Funding was used to prepare pre-assembled meal boxes that can each provide up to four meals for a family of four, distributed to more than a dozen member agencies in Delaware County.

Ridley School District - \$10,000

From March 17 – June 11, 2020, children in the Ridley School District had meals provided by the Food Service Dep. Funds were used to provide "Grab and Go" breakfast and lunch items for students.

Saint Katharine Drexel Food Pantry - \$10,000

Saint Katharine Drexel Food Pantry is located in the city of Chester. Funds were used to provide food and clothing for clients of the pantry.

Senior Community Services - \$10,000

Home-Delivered Meals program provided nearly 125,000 meals to elderly low-income residents in Delaware County communities, including Yeadon, Darby, Sharon Hill, Folsom, and Chester.

The Peggie & Paul Shevlin Family Foundation - \$4,000

Funds were used to provide food, groceries, and other essential supplies to recovery houses in Delaware County.

The Salvation Army - \$25,000

Funds were used to distribute food boxes and essential supplies such as sanitizers, utensils, masks, and more to community members.

Tyler Arboretum - \$21,500

Tyler Arboretum is a nonprofit arboretum in Delaware County. Funds were used to grow produce to support and supplement several Delaware County food pantries.

Upper Darby Corporation for Community and Economic Development - 17,000

Free Farmers' Market+Healthy Eating Program ensures emergency food for immigrant families. Funds were used to support a collaboration with Centro De Apoyo for a free farmers market and healthy eating project in Upper Darby.

Valley Youth House - \$4,000

Funds were used to purchase food, clothing, cleaning supplies, and other household items for youth in the juvenile justice and foster care systems and youth experiencing homelessness.

The Wayne Senior Center - \$5,000

The Wayne Senior Center was established to respond to the welfare needs of isolated and low-income seniors in Delaware County. Funds were used to purchase food and supplies for supplemental nutrition packs for at-risk seniors.

Women's Resource Center of the Delaware Valley (WRC) - \$5,000

WRC supports women, strengthens families, and builds community through information, referrals, and counseling. Funds helped to sustain WRC's Resource Coordination Counseling Services and support an Emergency Assistance Fund.

The heartache on the west end of Chester is beyond words. We hope you will be able to provide some relief and help alleviate the worry of not having food ... Our shelves are almost empty and we are praying for a blessing to help us help others. We are hopeful you will be that blessing.

Anna's Place



Technology

Chester Community Coalition (CCC) - \$1,300

CCC provides trauma-informed support services to families directly affected by gun violence in Delaware County. Funds were used to purchase telehealth software to continue providing therapy and managing secure communications.

College Possible Philadelphia - \$7,500

College Possible Philadelphia's mission is to help students to and through college. Funds were used to transition traditional in-person high school programming to a virtual model for the fall 2020 semester.

Centro de Apoyo Comunitario - \$52,715

Delaware County Immigrant Coalition's community outreach reached approximately 10,000 immigrants throughout a 16-week training and outreach effort. The coalition, consisting of 10 local immigrant service agencies, disseminated language-accessible, culturally specific educational resources to support individuals needing assistance in obtaining the vaccine.

Making a Change Group - \$27,551

Making A Change Group serves youth and families, addressing challenges plaguing at-risk youth in various local communities. Funds supported a consortium of vaccine education and outreach efforts in Chester.

Family Support Line of Delaware County, Inc. - \$7,500

Family Support Line of Delaware County, Inc provides support to child victims of sexual abuse and their families. Funds were used to purchase 5 PC-based laptops, speakers/headsets, video conferencing, and subscription service, and retrofit several older computers with video cameras.

Peaceful Living - \$3,840

Peaceful Living serves individuals with intellectual and developmental disabilities, including autism. Funds were used to enable Peaceful Living to enhance its digital community-building services, including group activities and 1:1 and 1:3 remote services.

Latino Connection - \$30,000

Latino Connection's mobile response unit's tagline is "Sharing knowledge to erase fear," through widespread community healthcare and health education offered with no insurance required. Funds were used to provide outreach and three testing events in Hispanic communities in Delaware County.

The Urban League of Philadelphia - \$20,000

The Urban League of Philadelphia, a historic civil-rights organization, partnered with the Black Doctors COVID-19 Consortium to address vaccine misinformation. Funds supported approximately 500 Emergency Hygiene Kits handed out during outreach events in Delaware County.



Vaccine Outreach, Education & Testing



Legal & Financial Counseling

Chester Community Improvement Project (CCIP) - 2 Grants \$10,000 & \$17,000

CCIP counseling services in Delaware County help low and moderate-income first-time homebuyers achieve their goal of homeownership by providing counseling services with an emphasis on credit/budget counseling for existing homeowners who are experiencing financial hardships and renters looking to buy their first home. Funds were used to provide emergency financial counseling to families experiencing financial hardship as a result of COVID-19.

Clarifi - \$10,000

Clarifi is the leading financial capability organization in Greater Philadelphia. Funds were used to provide emergency financial counseling to families experiencing financial hardship as a result of COVID-19.

Media Fellowship House - \$10,000

Media Fellowship House provides financial counseling and education to low and moderate-income households in Delaware County. Funds were used to provide emergency financial counseling to families experiencing hardship as a result of COVID-19.

Nationalities Service Center (NSC) - \$5,000

NSC is a leading refugee resettlement agency and a comprehensive human services provider for immigrants. Funding provided direct financial assistance to vulnerable clients, including gift cards to purchase food, hygiene, and cleaning items; rental assistance; teletherapy; and safety planning for victims of domestic violence.

SeniorLAW Center - \$5,000

SeniorLAW Center is on the front lines serving low-income, vulnerable seniors, seeking emergency protection from abuse, sexual assault, COVID-19 fraud, scams and exploitation, and all forms of elder abuse. Funds were used to expand hours, seek emergency responses, advocate with the courts, and educate the community about legal rights and resources.

Service Corps of Retired Executives Association (SCORE) - \$5,000

SCORE is the largest volunteer business expert network in the USA, providing professional advice to help entrepreneurs and nonprofit leaders start, grow, sustain, or transition businesses. Funds were used to promote mentoring services, produce educational webinars, and communicate information about nonprofit clients' Resilience and Recovery plans.

Delaware County residents faced tremendous needs as a result of this virus. Our county's nonprofits were called on to respond in ways they'd never had to before.





Supportive Services

ALS Association Greater Philadelphia Chapter - \$5,000

The Chapter's In-Home Care Program provides custodial care of up to 12 hours a week with activities of daily living by a home health aide. Funds were used for families living with ALS in their in-home care program, in Delaware County.

Chester Upland School District (CUSD) - \$18,240

Funds were used to fund Parent Technology Support Centers to educate, train and assist parents with aiding their children with virtual learning. Services also met the language needs of Spanish, Arabic, and French-speaking families.

Chester Upland Youth Soccer (CUYS) - \$1,228

CUYS strengthens the communities it serves by mentoring youth, engaging families, and promoting healthy living. Funds were used to give 1000 Chester, Upland, and Eddystone families a kit full of balls, beanbags, gliders, bubbles, and a jump rope to keep kids active during the pandemic.

Community Action Agency of Delaware County, Inc. (CAADC) - \$10,000

CAADC is the county's designated anti-poverty agency and the lead homeless services, provider. Funds were used for homelessness services, including emergency hotel placements for homeless residents, food, and essential supplies in homeless shelters.

Domestic Abuse Project of Delaware County (DAP)- \$10,000

DAP runs a 24/7 crisis hotline for domestic abuse victims, helping them relocate to safe houses, and working with them on safe exit plans and permanent housing options. Funds were used to support the continuation of services, including telephone crisis counseling, to survivors of domestic violence.

HEADstrong Foundation - \$2,010

HEADstrong Foundation offers financial, residential, and emotional support to families affected by cancer. Funds were used to provide virtual stress management subscriptions for cancer survivors.



Partners for Sacred Places - \$50,000

Partners for Sacred Places is dedicated to sound stewardship and active community use of older sacred places. Funds were used to provide onsite support for remote learning to students in Chester Upland and William Penn School Districts.

Philadelphia Freedom Valley YMCA - \$5,000

Funds were used to aid the Rocky Run and Haverford YMCA Early Learning Centers in providing childcare and school age programming to healthcare professionals' children while they were at work.

Teachers' Teammates - \$10,000

Teachers' Teammates brings together resources to offer the teachers in under-resourced schools in Delaware County. Funds were used for grab-and-go school supply bags for 3,000 K-6 grade students in the William Penn School District.

Widener University - \$600

Funds were used to purchase rehabilitation equipment to send to the clients' homes to maximize their function and independence during the pandemic.



Behavioral Health

Philadelphia County Medical Society - \$30,800

Springfield Psychological provides telehealth services for outpatient therapy and psychiatric medication management to 78 primary care and medical specialty practices. Healthcare providers and first responders are struggling with the moral injury created by this unprecedented pandemic. Funds were used to provide therapy services for frontline providers.



Personal
Protective
Equipment

Boys and Girls Club of Chester - \$10,024

Boys and Girls Club of Chester provides opportunities for wholesome youth development. Funds were used for COVID-19 summer camp preparation to provide childcare as parents transitioned back to work.

CareLink Community Support Services (CCSS) - \$10,000

CCSS provides support, housing, and employment assistance to individuals with severe mental illness and developmental disabilities. Funds were used for PPE for staff who work with individuals with persistent mental illness and/or developmental disabilities in Delaware County.

Chester Community Coalition (CCC) - \$5,360

CCC provides free trauma-informed therapy in a group format to families where a loved one has been assaulted or murdered. Participating families receive door-to-door transportation, supper, childcare, and case management support. Funds were used to purchase PPE and essential supplies.

Child Guidance Resource Centers (CGRC) - \$18,000

CGRC is the largest provider of children's mental health services in the greater Philadelphia area. Funds were used to purchase PPE and cleaning supplies for their community rehabilitation residential programs.

Children and Adults Disability and Educational Services (CADES) - \$10,000

CADES serves over 500 individuals with intellectual and physical disabilities. Funds were used to purchase PPE, including washable gowns, N95 masks, and disinfectants.

Community Action Agency of Delaware County, Inc. (CAADC) - \$4,713

CAADC is the County's designated anti-poverty agency and the lead provider of homeless services. Funds were used to purchase disinfectant tools and other cleaning supplies necessary for the safety of clients and staff.

Community Arts Center (CAC) - \$8,000

CAC engages over 18,000 community members in a range of arts experiences each year. COVID Response funds were used to add air filtration, enrollment services for virtual classes, and pandemic-impacted in-person classes.

The Communities of Don Guanella and Divine Providence - \$10,000

The Communities of Don Guanella and Divine Providence Villages serve over 400 men and women with Intellectual Disabilities. Funds were used to purchase PPE to continue to serve individuals with intellectual disabilities.

Community YMCA of Eastern Delaware County- \$46,210

The YMCA helps people and families build and maintain healthy habits in their everyday lives. Funds were used to purchase and install ionization air purification systems, cleaning supplies, a decontamination unit, and staff training around best practices in childcare and CDC and DOH guidance for social distancing and cleaning.

Elwyn - \$10,000

Elwyn is the leader in education, treatment, and support services for children and adults with autism, intellectual and developmental disabilities. Funds were used for personal protective equipment PPE for staff that supports individuals with intellectual and developmental disabilities in Community Residential Services (CRS) homes in Delaware County.

Individuals Aiding in Emergency Foundation - \$5,000

Individuals Aiding in Emergency Foundation offers support for the emotional, physical, and spiritual well-being of individuals and families impacted by a crisis situation. Funds were used to partner with Delaware County Emergency Services to collect essential products such as face masks, gloves, disinfectant cleaning supplies, and CARE Kits that include basic hygiene supplies.

Mental Health Partnerships - \$10,000

Mental Health Partnerships creates opportunities for individuals and family members to effectively respond to the challenges of mental health conditions. Funds were used to purchase PPE for staff at their Upper Darby emergency shelter.

MusicWorks - \$5,600

MusicWorks is Delaware Valley's only nonprofit music therapy provider. Funds were used for cleaning supplies, and Zoom virtual software.



The newly formed Delaware County Health Department

The Nile Swim Club of Yeadon - \$7,000

The Nile Swim Club, America's oldest African-American owned membership swim club, hosts ten or more summer day camps, which allows at-risk youth to have a place to enjoy during the summer. Funds were used for PPE, hand sanitizer, non-touch trashcans, soap and paper towel dispensers.

Pettaway Pursuit Foundation (PPF) - \$31,000

Pettaway Pursuit Foundation improves pregnancy, birth, postpartum, and NICU experiences, achieves healthier newborn outcomes, and empowers mothers. Funds were used towards the PPF Food Drive, the enhancement of their monthly Diaper/Formula Drive, and their Thanksgiving and Christmas Drives.

Phila. Freedom Valley YMCA - \$10,000

The coronavirus pandemic has put additional financial constraints on organizations like the Greater Philadelphia YMCA. Funds were used to acquire thermometers, personal protective items, safety, cleaning and sanitizing, training, and technology updates for distance learning.

The Salvation Army - \$10,000

The Salvation Army's emergency shelter is located in the gym at the Corps Community Center in Chester and can accommodate 35 residents. Funds were used to purchase divider screens that served as physical barriers between the cots and a new washer and dryer.

The Foundation for Delaware County also partnered with The Delaware County Council on **DELCO STRONG**, administering two rounds of CARES Act fund applications from non-profit organizations in our county.

Adult Congenital Heart Association
AFA Agency -All for All Agency
Be Proud Foundation
Benchmark School
Bestcore Arts and Technology Innovation INC.
Boys and Girls Club of Chester
Brandywine Battlefield Park Associates
Brandywine Conservancy & Museum of Art
Briarcliffe Fire Company
Broomall Fire Company
CASA Youth Advocates, Inc.
CCSA Foundation
Center for Resolutions (Community Dispute Settlement)
Centro de Apoyo Comunitario
Chester Community Improvement Project
Chester Cultural Arts and Technology Center
Chester Eastside, Inc.
Chester Education Foundation
Chester Upland Youth Soccer
Chichester Kinderschool
Christ Lutheran Community Outreach Corporation
Colonial Pennsylvania Plantation
Community Arts Center
Community YMCA of Eastern Delaware County
Darby Creek Valley Association
Darlington Fine Arts Center
Delaware County Advocacy & Resource Organization
Delaware County Board of Fire and Life Safety
Delaware County Historical Society
Delaware County Literacy Council
Delaware County Symphony

Delaware County Transportation
Management Association
Delco Early Learning Center
Drexel Neumann Academy
Family Promise of Delco Interfaith
Hospitality Network
Family Support Line of Delaware County, Inc.
Garrett Williamson
Heeding the Call
Hedgerow Theatre
Helen Kate Furness Free Library
Help Hope Live, Inc
Hill Top Preparatory School
Historic Lansdowne Theater Corporation
Hosanna Christian Family Development Center
I-LEAD, Inc.
Individuals Aiding in Emergency Foundation
J. Lewis Crozer Library
John J. Tyler Arboretum
Justice Bell Foundation
Kelly Music for Life, Inc.
Lansdowne Economic Development Corp. (LEDC)
Lansdowne Symphony Orchestra Association
Laura’s Children FDN
Main Line Art Center
Main Line School Night
Making a Change Group
Marple Public Library
Media Arts Council
Media Chamber Chorale
Media Providence Friends School
Media Upper Providence Free Library
Mothers' Home
Multicultural Community Family Services

With the Foundation's assistance, Delaware County Council awarded

\$2.8 MILLION IN GRANTS TO 103 DELAWARE COUNTY NONPROFITS

MusicWorks
Neighbor to Neighbor Community Development Corp.
Newtown Square Fire Company
Orchestra Concordia Association
Peaceful Living
Pendle Hill
Pennsylvania Veterans Museum
Peter's Place
Pettaway Pursuit Foundation
Radnor A Better Chance
Radnor Fire Company of Wayne
Radnor Township Civic Association
Rocky Run Fire Company
Senior Community Services
South Media Fire Company No.1
St Faith Preschool and Kindergarten
Swarthmore Friends Nursery School
Swarthmore Public Library
Talk School
The Bridge Foundation
The Career Wardrobe

The Community's Foundation
The Creative Living Room
The Deaf-Hearing Communication Centre
The Decorative Arts Trust
The Grayson School
The Media Theatre for the Performing Arts
The Peggie and Paul Shevlin Family Foundation
The Players Club of Swarthmore
The Saturday Club
The School in Rose Valley
The Walden School
Tuscarora Lapidary Society, Inc.
Upper Chichester Library
Upper Darby Arts & Education Foundation
Veterans National Education Program
Wayne Art Center
Wayne Senior Center
Women’s Resource Center of the Delaware Valley
World Was Made For You
Yeadon Education Athletic Association

The Foundation for Delaware County Board of Directors

The Honorable Dominic F. Pileggi, Chairperson

Judge, Delaware County Court of Common Pleas;
Past PA Senate Majority Leader

Corliss Boggs, Vice-Chairperson

Retired Banker

Cyrise L. Dixon, Secretary

Chief Operating Officer, City of Chester

Ted Peters, Treasurer

Chairman and CEO, Bluestone Financial Institutions Fund

Michael B. Adesman, M.D.

Cardiologist

Nicholas A. Aponte

Retired Senior Credit Executive, PNC

Dr. L. Joy Gates Black

President, Delaware County Community College

Robert J. Bruce

President Emeritus, Widener University

Daniel C. DuPont, D.O.

Pulmonologist

Donald W. Delson, Esquire

Retired Investment Banker; Trustee, Chester Charter Scholars Academy

H. Edward Hanway

Retired CEO and Chairman Emeritus, Cigna Corp.

Michael B. Magnavita

President and CEO, Franklin Mint Federal Credit Union

Joan K. Richards

Retired CEO & President, Crozer Keystone Health System

Robert N. Speare, Esquire

Partner, Speare & Hughey

Kelly Thornton

Partner, PwC

Malcolm J. Yates

Director of Law and Policy, Public Health Management Corporation

Kate Zidek

Investment Officer, Argo Capital Group

Frances M. Sheehan

President, The Foundation for Delaware County

COVID-19 RESPONSE FUND ADVISORY COMMITTEE

Michael B. Magnavita, CPA, Chair

L. Joy Gates Black, Ed.D.

Cyrise L. Dixon

Grant Gegwich

Joseph McLaughlin

Robert Simpson

Kelly Thornton

Malcolm Yates

Brian Zidek

Joanne D. Craig, Chief Impact Officer





Thank you

To our nonprofit partners, governmental allies, and donors for stepping up to care for our community

Let's keep investing in Delaware County together



THE
FOUNDATION FOR
DELAWARE
COUNTY