



LOOK AT
ALL WE
ACCOMPLISH...

TOGETHER.

If we can accomplish this much together in five years, think of all we can do in the next 10, 15 or even 25 years to benefit the people of Delaware County.

As The Foundation for Delaware County celebrates our fifth anniversary, we celebrate YOU—our partners, donors and advisors—who are committed to making sure that every Delaware County resident lives in a thriving household and community. TOGETHER, we have been able to . . .

SERVE

10,000+ people each year through the foundation's own public health programs, including Nurse-Family Partnership, WIC and Healthy Start.

DISTRIBUTE

more than \$7.1 million in grants, scholarships and charitable care, including \$1 million from our COVID-19 Response Fund.

ADVISE

donors on opportunities to invest in causes they care about deeply.

GATHER

Delaware County's nonprofit leaders for professional development and networking.

COLLABORATE

on key efforts such as the 2020 census and a first-ever Delaware County Health Department.

Thank you for partnering with us in our mission. With your support, The Foundation for Delaware County is building a civic endowment that will generate resources to improve the lives of our neighbors for generations to come.



Over our past three Impact Grant cycles, thanks to the support of generous donors, the foundation has increased the amount we are able to give to nonprofits by 20% each year.

Dear Delaware County supporter and partner,

The words “you’re on mute” have been said more often than any of us would like this year, but here at the foundation, “look at what we’ve accomplished together” cannot be said enough. We have experienced the power of working together as one Delaware County, and we’ve seen the difference we can make when we unite across geography, race and philanthropic interests.

As we mark our fifth anniversary, we celebrate the exponential growth and impact of the strong community foundation we’ve built together. One significant marker of our success was our recent full accreditation as an excellent community foundation by the Community Foundations National Standards Board of the Council on Foundations. Delaware County deserves to have well-supported nonprofits, state-of-the-art public health programs, and a permanent civic endowment that can address crises and challenges in the future. Together, we are building a stronger, healthier county for all.

We began our fifth year on July 1, 2020, three months into a pandemic with no end in sight and no vaccine on the horizon. Hundreds of you immediately stepped up to support the Delaware County COVID-19 Response Fund, and more donors came forward as the months rolled on, enabling us to invest \$1 million in our county’s critical nonprofits. We were honored when Delaware County Council tapped us to manage the distribution of almost \$3 million in “Delco Strong” federal grants to nonprofits.

And then, our grantmaking team of staff and volunteers awarded more than \$2 million in Impact Grants. **We did not do this work alone.** We relied on you as donors, volunteers, advisors, community leaders, elected officials and the nonprofit community to work with us so we could be more responsive and more effective.

We have been so impressed with how area nonprofits collaborated to get the word out about the 2020 census, coordinate food resources during the pandemic, and address vaccine hesitancy. You stepped up courageously despite facing your own organizational and personal challenges. We are honored to invest in you with grants and training through our Center for Nonprofit Excellence, and we’re proud to recommend you to generous Delaware County residents looking for guidance about where to give.

Perhaps there is no better example of the importance of having a community foundation than our role in launching the new Delaware County Health Department. We have been honored to partner with County Council in a variety of ways: convening a virtual information session hosted by WHYY for 180 residents; participating on the steering committee guiding the process; and advising on maternal and children’s health issues the department should address. At the council’s request, we established the Delaware County Public Health Fund, a critical way to support the department’s launch above and beyond what’s covered by public funds.

We’re also grateful that so many of you turned to us for philanthropic guidance this year—setting up donor-advised funds and including us in your estate plans—and that so many financial advisors are recommending the foundation to clients. We hope you will continue to spread the word about The Foundation for Delaware County as both a resource and a great cause to your family, friends and colleagues.

In just five short years, there is so much we have already accomplished. Let’s keep building for the future—a future that can be made so much brighter when we work for it together.

The Hon. Dominic F. Pileggi
Chairperson

Frances M. Sheehan
President



A Look Back

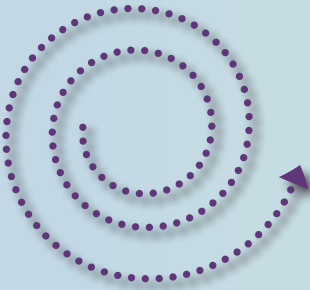
TOGETHER, We Celebrate Five Years of Impact.



“When The Foundation for Delaware County started five years ago, we wanted to find a way to sustain and strengthen Crozer-Keystone Health System’s critically important public health programs for high-risk, low-income families. We’ve been able to do that—and so much more. From the beginning, we had the support and engagement of people with a true passion for the good of Delaware County.

Thanks to the commitment of board members, leaders, staff and people like you, we have been able to seize the opportunity to think big and really develop a vision for Delaware County. Now we are the go-to organization for nonprofits when they need help taking their next steps. The progress in just five years has exceeded our expectations, but even more importantly, it demonstrates how the foundation and its partners—working together—will continue to be a catalyst for lasting change in Delaware County.”

–Founding Board Members Joan K. Richards, former President and CEO, Crozer Keystone Health System, and Robert J. Bruce, former Chairman of the Board, Crozer Keystone Health System



A Look Ahead

TOGETHER, We Confront Racism as a Public Health Issue.

“The goal is to practice what we preach. This means actively deciding how diversity should be reflected and embraced by our vendors, our board and our staff, as well as throughout our entire organization. Our mission is to make sure that everyone in Delaware County has a vibrant existence, with access to every opportunity they’re entitled to have.”

–Task Force Co-chairs Cyrise Dixon, Board Member, and Akesha Gainer, Social Services Director

Promoting diversity and inclusion was a key priority in our 2020-25 strategic plan. Following the murder of George Floyd, the foundation formed a racial equity task force made up of staff and board members in August 2020. The task force is now helping individuals and the foundation as a whole to examine and define our roles in dismantling racism, while engaging our Delaware County partners in conversations about achieving equity and justice.

Over the past year, the task force launched a discussion series, held community roundtables and webinars, and revised the foundation’s policies to be more intentional about diversity and equity in grantmaking, vendor relationships and staff hiring.

But we’re just getting started. We envision a Delaware County where justice and equity are experienced by every individual and within every organization.



TOGETHER, We Build Trust.

In FY2021, The Foundation for Delaware County distributed nearly \$3 million in grants, scholarships and other charitable care support.

The foundation spent down the balance of the 2020 Census Action Fund and awarded \$2.1 million in Impact Grants in FY2021, as well as \$1 million through the Delaware County COVID-19 Response Fund. *We have adopted a trust-based approach to philanthropy, which means that we get to know Delaware County’s nonprofits well and aim to be not only a funding source but also true partners in their work.* Our job is not simply to award grants but to know and understand these organizations, the communities they serve, and the good that they do—and to help nonprofits get to know us and each other. As a result, the foundation awarded more multi-year grants along with grants for general operating expenses. This approach empowers nonprofits to use the funds where they are most needed.

TOGETHER, We Respond to Crisis.



Community foundations play a critical role in providing assistance when any type of crisis hits: natural disasters, environmental catastrophes or, in the case of the past year, a global pandemic. The Foundation for Delaware County could not have foreseen the challenges of COVID-19 and its impact on food security, stable housing, employment, health and other aspects of people’s lives. But with the support of generous individuals and businesses, we helped our county weather the storm. Since March 2020, we have awarded \$1 million in grants to nonprofits working on the front lines in communities that felt the greatest impact of COVID-19.

* We Raised Awareness of COVID-19 Testing, Prevention and Vaccines.

Latino Connection

“In April 2020, at the peak of the pandemic, news reports indicated that Hispanics and Black Americans were dying at higher rates than other communities, and we knew our mobile unit could make a difference,” said George Fernandez, CEO of the Harrisburg-based Latino Connection. The Community-Accessible Testing and Education (CATE) mobile unit—a van staffed by bilingual community health workers—began traversing Pennsylvania to educate Latino and other vulnerable communities about COVID-19 prevention and to provide masks, hand sanitizer and COVID tests.

Thanks to a \$30,000 grant from the foundation’s COVID-19 Response Fund, CATE held 14 events in Delaware County from September 2020 through April 2021, reaching nearly 1,800 residents. “Many people were still working, living in close quarters with family members, dropping kids off at daycare,” Fernandez said. “They needed information on how to protect themselves and their families.”

Delaware County Immigrant Coalition

In March 2020, spurred by the looming challenges of the pandemic, 16 nonprofit organizations that serve immigrant communities came together to form the Delaware County Immigrant Coalition (DCIC). Together, they aimed to create culturally tailored messaging and education about COVID-19 that would appeal to their widely diverse communities.

With the help of a \$52,715 grant from the foundation, Centro de Apoyo Comunitario and nine of the other DCIC nonprofits got to work. Each organization targeted its outreach based on deep knowledge of its immigrant community, according to Layla de Luria, LCSW, executive

director of Centro de Apoyo Comunitario, which led the effort. But the model was the same: “We are the grassroots organizations that the immigrant community knows, and we all use people within each community to be our trusted voices,” de Luria said.

The efforts ranged from Zoom presentations, webinars and social media posts to TV spots on local networks and outreach to houses of worship. Coalition members also worked to provide access to vaccines in their local neighborhoods, holding educational events and clinics—with translators present as needed—at local high schools, pharmacies and community centers.

Vaccine Outreach and Education Grants
TOTAL: \$80,267

Centro de Apoyo Comunitario
Making a Change Group

COVID-19 Testing Grants
TOTAL: \$30,000

Latino Connection



Vaccine Hesitancy Initiative, Chester

A grant of nearly \$28,000 empowered four organizations to join forces in helping Chester residents overcome their hesitancy about getting COVID-19 vaccines. Making a Change Group (MACG), the Chester Community Improvement Project, the Chester Housing Authority, and Health Care Solutions of Delaware Valley began meeting monthly in March 2021—a collaboration facilitated by the foundation, according to Cory Long, founder and executive director of MACG. “It was a heavy lift,” he added, noting that fewer than 30 percent of Chester residents had been vaccinated by July 2021. Each organization worked to spread information about the vaccines’ safety and effectiveness and where to access them. Efforts included commercials on local radio networks, online broadcast segments with an African American pediatrician and pharmacist, yard signs and flyers in English and Spanish, and billboards at local churches.

* We Helped Our Partners Ensure Access to Healthy Foods.



Greener Partners

Greener Partners works with schools, communities and health care institutions throughout the Philadelphia area to improve access to healthy foods and provide education about nutrition, farms and gardens. With the support of a \$5,000 grant from the foundation, Greener Partners gave bags of fresh fruits and vegetables, along with recipes, to 30 students and families at the Chester Charter Scholars Academy in Chester every week for five months.



Senior Community Services

In FY2021, Senior Community Services’ (SCS) Home-Delivered Meals program provided nearly 125,000 meals to elderly low-income residents in Delaware County communities, including Yeadon, Darby, Sharon Hill, Folsom and Chester. The program typically relies on senior volunteer drivers who bring meals into homes, but the COVID-19 pandemic made that unsafe. A \$10,000 grant from our COVID-19 Response Fund helped SCS hire drivers to fill that gap from July 2020 through May 2021. Elderly residents who were homebound or unable to cook for themselves received the nutritious meals they needed—meals often tailored for health issues such as diabetes, kidney disease and heart conditions. The grant also helped SCS kitchens operate safely with extra cleanings and personal protective equipment for staff.

Food and Essential Supplies Grants
TOTAL: \$214,820

- Chester Arts and Cultural Center Corporation
- Chester Children’s Chorus
- Circle of Giving 2020
- Cradles to Crayons
- Drexel Neumann Academy
- Family and Community Service of Delaware County
- Greener Partners

- John J. Tyler Arboretum
- Media Food Bank
- Mercy Catholic Medical Center – Mercy Fitzgerald Campus
- Mitzvah Circle
- Pettaway Pursuit Foundation
- The Salvation Army
- Upper Darby Corporation for Community and Economic Development

* We Assisted Residents With Housing Concerns.

Chester Community Improvement Project

A \$30,000 COVID-19 Response Grant is helping the Chester Community Improvement Project (CCIP) expand its homebuyers’ counseling services. CCIP assists low- and moderate-income families with purchasing their first home, working in partnership with the Chester Economic Development Authority and the Delaware County Office of Housing & Community Development. It also provides credit and budget counseling for existing homeowners facing financial hardships, which have intensified during the pandemic.



Medical-Legal Partnership

Many family members in the foundation’s Healthy Start and Nurse-Family Partnership programs lost employment due to COVID-19 or had to stop working to care for children who were not in school or daycare. Our two full-time attorneys with the Medical-Legal Partnership (HELP: MLP), which provides legal services for these families, were there to help them navigate the maze of pandemic-related state- and federal-assistance programs—such as child tax credits and rent assistance—so they could stay in their homes and avoid eviction or foreclosure.

“This was a testament to the beauty of the Medical-Legal Partnership: We could identify families with potential issues and then work together closely to tap into the resources available to keep them stable. COVID-19 was the storm, and we served as the umbrella.”
–Jordan Casey, Esq., former Attorney, HELP: MLP, and Director, Housing Opportunities Program for Equity (HOPE)

- Personal Protective Equipment (PPE/Cleaning Supplies) Grants**
TOTAL: \$97,173
- Boys and Girls Club of Chester
 - CareLink Community Support Services
 - Centro de Apoyo Comunitario
 - Child Guidance Resource Centers
 - Children and Adult Disability and Educational Services (CADES)
 - Community Action Agency of Delaware County, Inc.
 - Community Arts Center
 - Community YMCA of Eastern Delaware County
 - MusicWorks
 - Philadelphia Freedom Valley YMCA
 - UAC/Chester Community Coalition

- Legal and Financial Counseling Grants**
TOTAL: \$17,000
- Chester Community Improvement Project

- Supportive Services Grants**
TOTAL: \$82,078
- Chester Upland School District
 - Chester Upland Youth Soccer
 - HEADstrong Foundation
 - Partners for Sacred Places
 - Teachers’ Teammates
 - Widener University

- Technology Grants**
TOTAL: \$7,500
- College Possible Philadelphia

KEEPING DELCO STRONG

In summer 2020, Delaware County Council announced that nonprofit organizations would also be eligible for “Delco Strong” grants funded through the federal CARES Act. These grants initially were reserved for local businesses. The council called on The Foundation for Delaware County to process and evaluate the applications and make funding recommendations. Nearly \$3 million in grants were awarded in two cycles.

TOGETHER, We Advance Public Health.

Public health means more than ensuring access to high-quality health care and medical services. It also means addressing the social determinants of health: financial stability, housing, the community environment, education, racism and discrimination, and child welfare—among others. Where people live and the obstacles they face have a profound impact on their overall health. With your support, The Foundation for Delaware County is attending to these challenges.



Making History: A Public Health Department for Delaware County

Over the past year, the foundation has collaborated as a key partner in a landmark effort to start a public health department in Delaware County. We are the only county in Philadelphia’s five-county region without its own health department. The impact of this hit hard during the COVID-19 pandemic, when our county had to rely on the Chester County Health Department to help coordinate our response, services and public health data collection.

“Modern health departments are able to collect data and analyze it in order to identify where the needs are in the county, and then gather the right partners to address those needs,” said The Foundation for Delaware County CEO Frances Sheehan, who is deeply involved in the effort.

In early 2021, the foundation established the Delaware County Public Health Fund as a way for individuals, businesses and other community partners to support startup costs and programming not covered by taxpayer dollars. The fund has already raised \$160,000 for the effort. Key milestones so far include the opening of the Delaware County Wellness Center in Yeadon and the appointment of five members to the Delaware County Board of Health in April 2021 by Delaware County Council.

“In big and small ways, The Foundation for Delaware County’s commitment to forming the health department has been evident from day one. Frances and her staff made this a priority and provided the leadership and the momentum needed to move this forward, even as we all dealt with COVID-19. Having people at the foundation who understand Delaware County’s pressing health needs and are respected as leaders in this community has been critical.”

—Rosemarie Halt, Chair, Delaware County Board of Health

Additional Public Health Impact Grants

Hospice & Home Healthcare Grants
TOTAL: \$55,000

Main Line Health HomeCare & Hospice: \$25,000
Surrey Services: \$30,000

Services for Cancer Survivors Grants
TOTAL: \$26,278

Bringing Hope Home: \$15,000
Philadelphia Freedom Valley YMCA: \$11,278



TOGETHER, We Build Healthier Lives From the Beginning.

Connected Visions

After several years of mentoring Chester’s young people through Making a Change Group (MACG), Executive Director Cory Long realized that strengthening their families could make an even greater difference to their health and well-being. In spring 2020, MACG launched Connected Visions, which received a \$25,000 grant from the foundation this year. The program’s three case managers work one-on-one with 35 families who have children participating in the youth mentoring program. The case managers provide support surrounding mental health and emotional wellness, career development, budgeting, healthy living, trauma, and conflict resolution. Connected Visions also offers skills workshops and community-building events for families.

Voices for Children Coalition

The foundation made a three-year grant of \$205,769 to CASA Youth Advocates to support the Voices for Children coalition, a community-driven grassroots group focused on improving children’s well-being throughout Delaware County. The coalition provides a structure for organizations that serve children and families to discuss challenges, share best practices, and advocate for policies and systems that prioritize children’s needs.

“Before the coalition was established, there was no place where providers could meet regularly to share resources and information and also work together to reach policymakers. Voices for Children is filling this gap.”

—Elisha Coffey, MSW, Advocacy Coordinator, CASA Youth Advocates



Justice in Education

Last year, Children First (formerly Public Citizens for Children and Youth) convened a series of five virtual town halls for high school students from Bucks, Delaware, Montgomery and Philadelphia counties. The town halls provided a forum for teens to discuss the effects of COVID-19 on their education and to voice their concerns about the disproportionate impact on low-income versus high-income school districts. They also shared personal experiences with inequities in education along lines of race, income and geography. One of these town halls included more than 20 state and local legislators concerned about these issues.

Based on the project’s success, Children First is piloting a Justice in Education advocacy training program for Delaware County high school students during the 2021–22 school year. The foundation awarded the nonprofit a three-year \$60,000 grant to launch the effort.



“After listening to students’ stories and concerns, it was evident that they wanted a space to learn how to effectively advocate for equity in education. Justice in Education will teach them how to speak at school board meetings and with government officials, present information about state education funding, and plan and execute large-scale events to engage their peers in the advocacy process.”

–Tomea Sippio-Smith, Esq., K-12 Education Policy Director, Children First

LEAD-FREE DELCO

The foundation awarded \$60,000 over three years to the Delaware County Lead Poisoning Prevention Coalition, led by Children First, which is an ongoing effort to raise awareness about the dangers of lead poisoning in Delaware County’s homes and rental properties. The coalition educates parents about screening their children for lead poisoning and helps them access lead testing and remediation services for their homes.

Children’s Health and Well-Being Impact Grants
TOTAL: \$1,663,237

- Boys and Girls Club of Chester: \$40,000
- CASA Youth Advocates, Inc.: \$205,769 over three years
- CCSA Foundation: \$25,000
- ChesPenn Health Services: \$180,000 over three years
- The Chester Children’s Chorus: \$23,000
- Chester Community Coalition: \$66,148 over three years
- The Chester Cultural Arts and Technology Center: \$15,000
- Chester Eastside, Inc.: \$10,000
- Chester Education Foundation: \$130,000 over three years
- Chester Upland Youth Soccer: \$15,000
- Child Guidance Resource Centers: \$25,000
- Children First: \$120,000 over three years
- College Possible Philadelphia: \$70,000 over two years
- Drexel Neumann Academy: \$75,000 over three years
- Elwyn: \$114,480 over three years
- Episcopal Community Services (ECS): \$60,000 over three years
- Family Support Line of Delaware County, Inc.: \$60,000 over three years
- First Up: \$120,000 over three years
- Garrett Williamson: \$25,000
- Harcum College: \$47,700
- Horizons Episcopal Academy: \$15,000
- J. Lewis Crozer Library: \$26,140
- Kid Smiles: \$25,000
- Legal Aid of Southeastern Pennsylvania: \$30,000
- Making a Change Group: \$25,000
- Mitzvah Circle: \$20,000
- Pennsylvania Partnerships for Children: \$25,000
- The School of Parent Education: \$20,000
- Upper Chichester Library: \$5,000
- Upper Darby Arts & Education Foundation: \$15,000
- Widener University: \$30,000

In FY2021, the foundation directed more than \$1.6 million in Impact Grants to nonprofits dedicated to children’s health and well-being. This represented roughly 75 percent of the total Impact Grants awarded.

TOGETHER, We Sustain and Strengthen Our Community Programs.



A constant source of support and care for low-income families is critical in “normal” times, but became even more so during the pandemic. The foundation’s public health programs served nearly 9,000 county residents in FY2021. Healthy Start, Nurse-Family Partnership, and the Special Supplemental Nutrition Program for Women, Infants, and Children (WIC) traditionally have been grounded in one-on-one relationships between staff and clients that are built over time. In March 2020, these programs’ staff members worked quickly to transition from in-person services to virtual home visits and phone-based check-ins.

Families in both Healthy Start and Nurse-Family Partnership continued to receive the full complement of services they need to get their babies and young children off to the best start in life: case management and care coordination, health and life skills education, behavioral health support, and social work services. The Medical-Legal Partnership (HELP: MLP) attorneys counseled clients by phone and virtually to help them with legal matters, housing issues and complex applications for pandemic-related assistance programs.

WIC also offered appointments online and by phone so that families with young children could maintain their access to healthy foods, infant formula and nutrition counseling. WIC’s offices remained open in order to reload benefits on clients’ cards, which could be picked up or mailed to their homes. These critical benefits allow families to buy foods rich in protein, iron, vitamin A, vitamin C and calcium, as well as iron-fortified infant formula, infant foods, canned fish, special formulas when medically necessary, and much more.

“Nurse-Family Partnership has been very helpful to me during a time when the whole world shut down and I was having my first child. It was helpful to have someone besides my doctor to call if I had questions, especially with my preeclampsia diagnosis at 33 weeks. My nurse has been wonderful throughout my pregnancy and a great source of advice and guidance while raising my now 16-month-old.”

–Felicia Migatz, Client

“Healthy Start is like a second home for me. I really don’t have a family and I came from the system, so it took a lot for me to be able to walk into the program and sign up. I have been with them for over six years and I love everyone there. They’re respectful and patient and they love my kids.”

–Anonymous Client

OUR NEWEST PROGRAMS



Over the past year, The Foundation for Delaware County launched two new public health programs to address additional pressing areas of need for our families:

Housing Opportunities Program for Equity (HOPE) provides housing placement, advocacy, case management, tenancy and financial education, referral services, and direct financial support. HOPE’s goal is to ensure that all Delaware County residents have access to safe, secure and stable housing (see page 14).

The Fatherhood Program is working with our existing home-visiting programs to help fathers and male partners become more involved during pregnancy and early childhood. The program’s coordinator and internal committee are partnering with other community groups focused on fatherhood involvement so that we can tailor outreach effectively. In June, the foundation hosted a virtual Delco Fatherhood Summit in partnership with the Chester Housing Authority, Daddy University and KMP Doula Service.

TOGETHER, We Address Hunger in Delaware County.

With your support, the foundation directed more resources in FY2021 toward the challenge of food insecurity faced by many families, children and senior citizens. “Food insecurity” means that a household does not have reliable access to a sufficient quantity of affordable, nutritious food. By running the WIC program at three sites in Eddystone, Springfield and Upper Darby, the foundation has witnessed the impact of hunger firsthand—a problem that worsened as a result of the COVID-19 pandemic.

FOOD INSECURITY IN DELAWARE COUNTY



The Fund for Food Security: Strengthening the Food Bank Network in Delaware County

In FY2021, the foundation created The Fund for Food Security, which gives donors the opportunity to support emergency food providers and a new centralized food bank for Delaware County. The county is working with Share Food Program, a 20-year-old Philadelphia-based nonprofit, to create a system that brings together independent food pantries throughout Delaware County. A centralized approach will ensure that pantries can get the food they need more quickly and have the means to distribute it. Share Food Program is collaborating with the existing network of providers to understand their needs and how they could best be served by the central food warehouse they are establishing in Folsom.

Wayne Senior Center

Thanks to a grant from The Philadelphia Foundation’s Delaware County Home Care Association Fund, The Foundation for Delaware County made a \$35,000 grant to the Wayne Senior Center to provide nutritional safety net services for older adults in the Highland Park neighborhood.

“The crisis of the coronavirus pandemic has highlighted the number of older adults throughout our community facing food insecurity. Our nutrition program alone has seen over a 250-percent increase in demand this year, and we have provided older adults with over 45,000 meals to date. This funding supports the expansion of our emergency nutrition program and allows us to serve older adults in the Radnor Township Civic Association neighborhood, a historically underserved area in Delaware County.”

—Katie Mahon, Executive Director, Wayne Senior Center

Food Security Impact Grants

TOTAL: \$214,362

- Chester Arts and Cultural Center Corporation: \$40,000
- Family and Community Service of Delaware County: \$15,000
- Pettaway Pursuit Foundation: \$25,000
- The Salvation Army: \$15,000
- Senior Community Services: \$50,000
- Upper Darby Corporation for Community and Economic Development: \$34,362
- Wayne Senior Center: \$35,000



Pettaway Pursuit Foundation

Based in Lansdowne, Pettaway Pursuit Foundation gives emotional and practical support to low-income expectant mothers, their partners and their families as they navigate the challenges of pregnancy and bringing a new baby into their lives. Pettaway

offers doula services and lactation counseling, advises new parents on how to meet their baby’s needs, and helps with access to baby essentials. Because nutritious food is so critical to children’s growth and development, Pettaway started the

Harvest Food Program to provide food boxes to families in need. With the help of a \$25,000 grant from the foundation, the program is distributing 1,800 food boxes to families, serving an estimated 3,500 county residents.

TOGETHER, We Create Stronger, More Vibrant Communities.

Where people live has a significant impact on their physical and mental health. This includes all aspects of their built environment: the house or apartment itself as well as surrounding neighborhoods, streets, parks and community gathering places. With your help, the foundation is working to ensure that residents living in every Delaware County zip code have access to safe, healthy housing and stronger neighborhoods.



16 percent of households in Delaware County have a severe housing problem: overcrowding, high housing costs, or lack of kitchen or plumbing facilities.

15 percent of households spend 50 percent or more of their income on housing.

Source:
[CountyHealthRankings.org](https://www.countyhealthrankings.org)

Our Newest Program: Housing Opportunities Program for Equity (HOPE)

In July 2021, we announced the creation of a new public health program: the Housing Opportunities Program for Equity, or HOPE.

HOPE represents a critical next step and expansion in the partnership we have cultivated with the Chester Housing Authority and our Medical-Legal Partnership. HOPE will serve as a vital resource for struggling families to directly address their health-harming, unstable and inadequate housing. Former HELP: MLP attorney Jordan Casey, Esq., now HOPE’s director, has witnessed the need for such a program firsthand.

“If you lose housing, it creates instability by disrupting your employment, your children’s education, your ability to access medical care,” Casey said. “All of your focus becomes, ‘Where am I sleeping tonight?’ Alternatively, if you have housing but it is riddled with poor conditions, such as toxic mold, mice droppings or leaking pipes, you’re missing work or your kids are missing school due to breathing problems or other health issues.

“When COVID-19 hit, we saw that people were forced to quarantine in deteriorating homes or apartments. Parents and children out of work and school were spending more time in these substandard housing environments than ever before,” Casey added. “Our goal is to address this determinant of health and give people the opportunity they deserve to live in habitable, safe housing.”

HOPE will provide housing placement, advocacy, case management, tenancy and financial education, referral services, and direct financial support.

“Housing is health—that is the mantra of HOPE.”

—Jordan Casey, Esq., Director, HOPE

Utility Works Maker Space

Utility Works in Lansdowne is home to about 30 local artists who use its studios and workshops for painting, sculpting, fashion, metalwork, photography and other art forms. With the support of a \$30,000 grant from the foundation to the Lansdowne Economic Development Corporation, Utility Works is renovating another section of its historic century-old building to create an expanded maker space.

Center for Equity & Social Justice

More diverse and inclusive workplaces are a critical factor in ensuring equal opportunities for employees from different backgrounds. The foundation made a \$23,706 grant to Delaware County Community College’s Center for Equity & Social Justice to support the development of a 24-hour certificate program on diversity, equity and inclusion.

Riverfront Alliance of Delaware County

The Riverfront Alliance of Delaware County is a consortium of businesses and nonprofits working to revitalize communities along the Delaware County waterfront—with a major focus on housing. Over the past year, with the help of a \$20,000 grant from the foundation, the Riverfront Alliance collaborated with the Chester Community Improvement Project (CCIP) and local contractors to make exterior improvements to 25 homes in Chester’s Nova Vista and Irvington Hills neighborhoods.

Community and Economic Development Impact Grants TOTAL: \$154,706

Chester Community Improvement Project (CCIP): \$30,000

Clarifi: \$20,000

Delaware County Community College Educational Foundation: \$23,706

Lansdowne Economic Development Corp. (LEDC): \$30,000

Riverfront Alliance of Delaware County: \$20,000

Upper Darby Community Outreach Corporation: \$30,000



Census 2020: Making Sure Every Resident Counts

In spring 2020, as the newly formed Delaware County Immigrant Coalition worked to educate immigrant communities about COVID-19 (see page 5), 12 of its members launched a similar effort to promote the 2020 census. Led by Multicultural Community Family Services in Upper Darby, the effort received support from the Delco Counts 2020 Action Fund, a collaboration of The Foundation for Delaware County and other grantmaking organizations, including the United Way of Greater Philadelphia and Southern New Jersey, Franklin Mint Federal Credit Union, PECO, Laborers Local 413, Wells Fargo, Delaware County Memorial Hospital’s Medical Staff Fund, and Crozer-Chester Hospitals Medical Staff Fund.

Coalition members initially came together for training on how to encourage their respective communities to participate in the census. Strategies included Facebook posts, online events and webinars, posters and lawn signs, door-to-door distribution of leaflets to homes and businesses, and assistance with filling out online census forms at community events. Although materials were tailored to different communities’ cultural needs, the overall message was the same: *By being counted, you and your neighbors are more likely to get the resources that foster even stronger neighborhoods.*

“The coalition reached people who never would have been reached, by people who looked just like them.”

—Portia Kamara, Founder and Executive Director, Multicultural Community Family Services

Census 2020 Grants TOTAL: \$41,804

Chester Community Improvement Project

Making a Change Group

Multicultural Community Family Services

Upper Darby Corporation for Community and Economic Development

TOGETHER, We Strengthen Our Nonprofit Community.

Center for Nonprofit Excellence

The Foundation for Delaware County does not simply make grants to nonprofits doing good work; we also invest in capacity building to help them succeed. With your support, we are providing the training, tools, networking opportunities and other resources that help nonprofits deepen their impact. As we learn more about our local nonprofits and they learn more about us and each other, we strengthen our partnerships and build a better Delaware County for all.

VIRTUAL LEARNING

In December 2020, the foundation introduced a series of virtual “Learn” events for Delaware County nonprofits on topics such as applying for grants and taking action on racial justice.

FY2021 marked the second full year of our **Peer Learning Circle** program, which launched virtually in April 2020 with two cohorts—executive directors and senior staff leaders—and enrolled two more cohorts in April 2021. The program brings these nonprofit leaders together for 10 sessions over the course of a year to share challenges and solve problems with the support of expert facilitators and presenters. So far, 46 nonprofit leaders have participated.

In October 2020, we launched a virtual **Nonprofit Management Certificate** in partnership with The Nonprofit Center at LaSalle University’s School of Business, enabling nonprofit leaders and staff to earn this certificate at a reasonable cost. From fall 2020 through summer 2021, 23 staff and board members from local nonprofits participated in monthly six-hour sessions on workforce diversity, effective marketing and storytelling, strategic planning, leadership, and other topics.



“The Peer Learning Circle has been a phenomenal way to build a professional network of like-minded colleagues to share questions, problems, difficulties and the occasional achievement with. When the pandemic shutdown forced us all to suspend public activities at our agencies and work from our homes, we had a burgeoning support group where we could commiserate, share tips, and discuss how to navigate the personal and professional changes we encountered.”

–John Federico, Director of Advancement, Senior Community Services

Nonprofit Management Services

Small nonprofits, start-up efforts and grassroots organizations often do not have the resources or staff to manage operational tasks such as administering grants, thanking donors and handling finances. This year, the foundation began offering nonprofit management services, including fiscal sponsorship and back-office accounting support. These services empower nonprofit staff members and volunteers to focus on fulfilling their mission while outsourcing financial and accounting tasks to us.



Circle of Giving 2020: Helping Families Through the Pandemic

In March 2020, Media residents Aimee Rubin and Kelly Yiadom launched an effort to support local families dealing with economic hardship as a result of the pandemic. Initially, they focused on needs within the Rose Tree-Media School District, rallying local restaurants and grocery stores to donate meals, groceries and gift certificates. When they raised \$18,000 in their first weekend, they knew they were on to something—and the effort snowballed from there, expanding into other Delaware County communities.

When Aimee and Kelly looked into the possibility of becoming a full-fledged nonprofit 501(c)(3)

organization, they realized it was a complex process that could take up to two years. They soon learned that The Foundation for Delaware County could offer another option: fiscal sponsorship.

The foundation now serves as Circle of Giving 2020’s fiscal sponsor, which means we can manage the finances, accept tax-deductible monetary donations (that can also qualify for company match programs), and send acknowledgements to donors, all on Circle of Giving 2020’s behalf. This enables Aimee and Kelly to build relationships with local businesses and expand their reach throughout the county.

“The foundation is incredibly well connected in the community, and it is a great thing to be able to say they are our fiscal sponsor. There are so many benefits to this arrangement. We don’t have to worry about the administrative stuff, and it gives our donors peace of mind. We have been extraordinarily successful, and being in a fiscal sponsorship with the foundation has only benefited us.”

–Aimee Rubin and Kelly Yiadom, Founders, Circle of Giving 2020

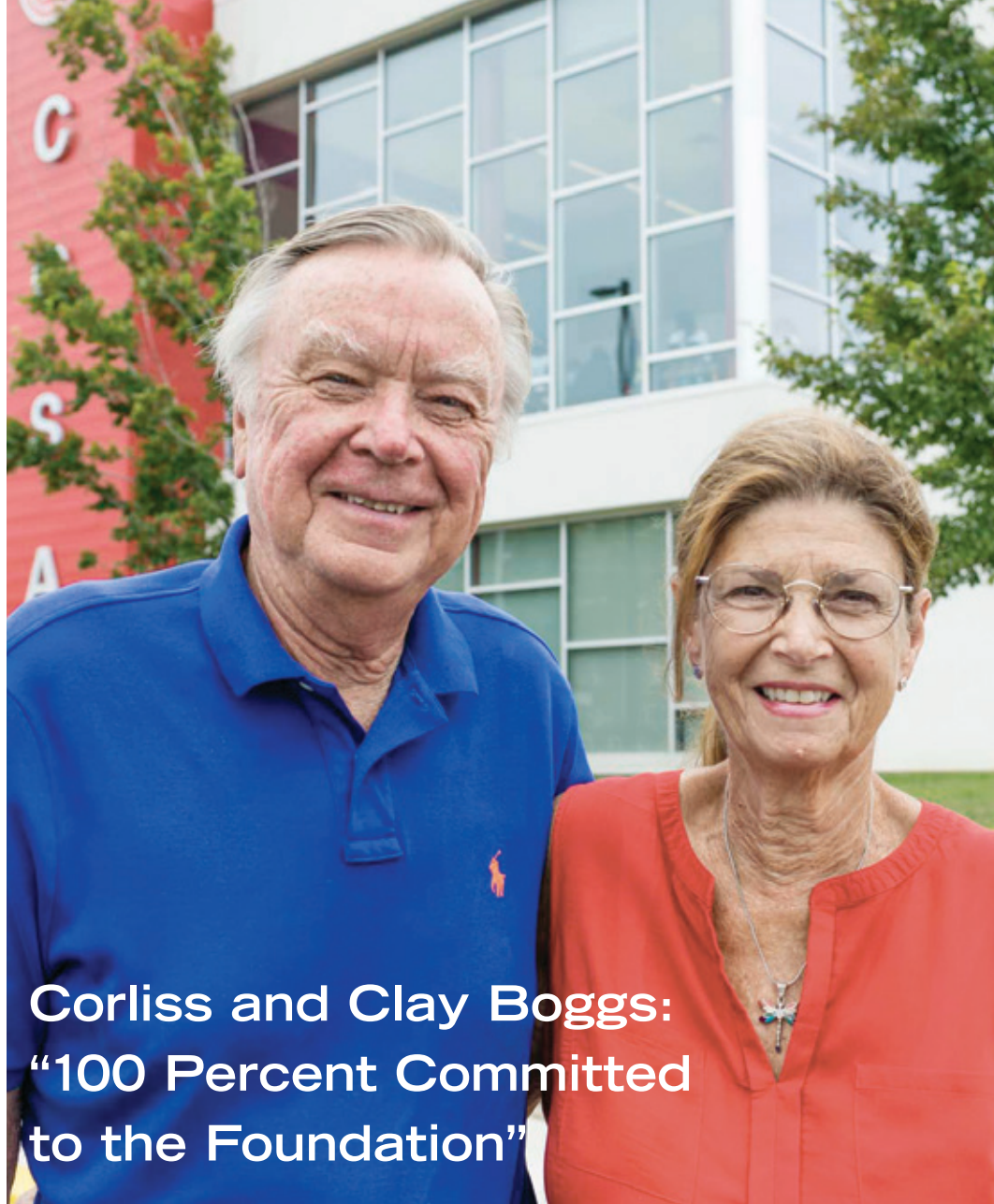
Library Foundation of Delaware County

The foundation provides accounting and finance services for the Library Foundation, which raises funds to support the 26 public libraries within the Delaware County Library System. Library Foundation Director Mary Pat Lynam can focus on board development, fundraising and collaboration with the libraries’ leaders while leaving time- and technology-intensive administrative and financial tasks to us.



TOGETHER, We Inspire Donors to Give Back.

Only 15 miles separate the community of Wayne from the city of Chester, and Glen Mills from Darby Township, but these and other county neighborhoods can often seem worlds apart. The Foundation for Delaware County works closely with donors who want to build a legacy that will benefit their Delaware County neighbors now and for decades to come. Some direct their giving to a specific fund or area of interest, while others allow the foundation to use funds where they are most needed. In whatever ways donors choose to give, they know that they are helping to build a healthier, more equitable Delaware County for all residents.



**Corliss and Clay Boggs:
'100 Percent Committed
to the Foundation'**

As a founding board member of The Foundation for Delaware County, Corliss Boggs has been deeply involved since the very beginning. A retired banker who raised two children on the Delaware County side of Ardmore with her husband, Clay, she says that “giving back to the community is very much in my DNA,” thanks to the example set by her mother, an active volunteer. Corliss volunteered at her children’s schools, served on the board of Crozer-Keystone Health System, and was board chair for the Delaware County Memorial Hospital Foundation. The opportunity to help establish The Foundation for Delaware County five years ago seemed like a perfect fit.

“The foundation knows what our interests are—primarily education and the arts—and makes us aware of opportunities we otherwise wouldn’t have known about.”

Corliss and Clay have always made annual gifts to the foundation, but recently they stepped up their commitment by establishing a donor-advised fund.

“This is a great way of handling philanthropy,” Corliss said. “We found we could make a large donation of appreciated stock all in one place, without sending it to many different organizations. We then have the opportunity to dole out resources according to our interests. The foundation makes it easy.”

The cause nearest and dearest to their hearts is the Chester Charter Scholars Academy (CCSA), an arts-integrated K-12 charter school in Chester, where Corliss also serves as the CCSA Foundation’s treasurer. “Past years have seen 100 percent of the students graduate, and they all have a plan to go on to a two- or four-year college, trade school, the military, or employment. It is pretty amazing,” Corliss said.

The Boggs have directed funds through the foundation to other great causes: the Pennsylvania Innocence Project, which works for justice for those who have been wrongly convicted, Delaware County Community College’s Center for Equity and Social Justice, and Delco Arts Week.

“The foundation knows what our interests are—primarily education and the arts—and makes us aware of opportunities we otherwise wouldn’t have known about,” Corliss said. “The funds are there, and if something of interest comes to us, we can easily make that donation.” In addition, Corliss and Clay have directed funds to the foundation for general purposes, to be used where they are most needed. Corliss noted that her adult children will be successors to the fund, which is a way of involving them in philanthropy.

Clay, retired from Morgan Stanley, is pleased with the investment returns on the fund and the ease of using the donor-advised fund portal. “I can log in at any time to look at the balance, to request a donation to be made, and to see the history of the account. If we don’t have a specific organization in mind, the foundation will make suggestions, or we can transfer money to a field-of-interest fund and let the foundation use its expertise to make a greater impact,” he said.

“I am 100 percent committed to the foundation,” Corliss added. “It is such a huge benefit to the county to have this organization. Everyone here is totally invested in doing the very best we can for Delaware County.”



Did you know that you can expand your support by making a gift without parting with any money now? If you’re curious about how you might further the foundation’s mission through a gift in your will, a living trust, or some other type of estate gift, we can help. There are options you may not have considered that can create a legacy you may never have dreamed possible.

Ready to start a fund that allows you to support the causes close to your heart? Contact Ellen Grill at egrill@delcofoundation.org or 610-744-1015 for more information about giving opportunities in Delaware County.

Fiscal Year 2021 Financial Report

The foundation takes investing your funds very seriously. We seek the best possible risk-adjusted return—maximizing dollars available to fund critical work in Delaware County today, while prudently stewarding and growing those resources to maintain an enduring source of philanthropic capital to meet emerging needs well into the future. We remain committed to responsible stewardship, transparency and public accountability in all that we do.

The performance objective for the investment portfolio is to achieve an average total rate of return that is equal to or greater than the foundation’s expected spending plus inflation. It is expected that the annual rate of return on investments will be commensurate with the prevailing investment environment. The portfolio yielded a 26.51 percent return this year, beating the blended benchmark by 2.95 percentage points. Since its inception, the portfolio has returned 11.80 percent, also outperforming the blended benchmark.

Aligning our investment strategy with the foundation’s overall mission, the Investment Committee incorporated environmental, social and corporate governance (ESG) funds into the foundation’s investment portfolio. The foundation invests its equity investments and a portion of its fixed income investments in ESG funds.

Your collective giving helps us transform our region for the better and enrich the quality of life throughout Delaware County. Together we will continue to support many wonderful causes throughout the community.

Ted Peters, Chair, Finance Committee

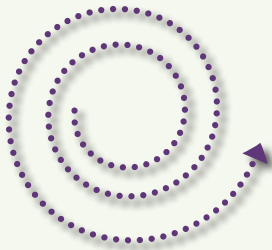
H. Edward Hanway, Chair, Investment Subcommittee

Statements of Financial Position as of June 30, 2021 and 2020

	2021	2020
ASSETS		
CURRENT ASSETS		
Cash and cash equivalents	\$ 2,003,381	\$ 2,670,981
Cash surrender value of life insurance	260,941	242,984
Pledges receivable	-	10,000
Grants receivable	678,334	670,722
Other current assets	145,179	146,826
Total Current Assets	3,087,835	3,741,513
NONCURRENT ASSETS		
Investments	73,097,606	59,223,307
Beneficial interest in perpetual trusts	2,091,948	1,744,320
Property and equipment, net	187,589	226,316
Total Noncurrent Assets	75,377,143	61,193,943
TOTAL ASSETS	\$ 78,464,978	\$ 64,935,456
LIABILITIES AND NET ASSETS		
CURRENT LIABILITIES		
Accounts payable and accrued expenses	\$ 305,264	\$ 234,321
Grants payable	812,150	122,780
Deferred revenue	186,751	106,530
Payroll Protection Program loan payable	183,325	183,325
Total Current Liabilities	1,487,490	646,956
NONCURRENT LIABILITIES		
Annuities payable	175,863	181,997
Environmental liabilities	140,158	177,208
Accrued paid time off	188,575	187,436
Insurance liabilities	230,004	243,305
Total Noncurrent Liabilities	734,600	789,946
NET ASSETS		
Without donor restriction	67,492,639	56,688,561
With donor restriction	8,750,249	6,809,993
Total Net Assets	76,242,888	63,498,554
TOTAL LIABILITIES AND NET ASSETS	\$ 78,464,978	\$ 64,935,456

Statement of Activities Year Ending June 30, 2021

	2021 TOTAL
PUBLIC SUPPORT, REVENUES AND GAINS	
Contributions	\$ 1,933,588
Grants from government agencies	4,699,115
Special events, net of expenses	50,288
Miscellaneous income	15,195
Changes in value of trusts	405,764
Investment income	15,292,009
TOTAL PUBLIC SUPPORT, REVENUES AND GAINS	22,395,959
EXPENSES	
Program services	8,501,338
Management and general:	
Administration	645,158
Development	396,224
Transition costs	108,905
TOTAL EXPENSES	9,651,625
CHANGE IN NET ASSETS	12,744,334
NET ASSETS, BEGINNING OF YEAR	63,498,554
NET ASSETS, END OF YEAR	\$ 76,242,888
Investment Advisors: PFM	
Trustee Bank: U.S. Bank	
Operating Bank: TD Bank	
Auditors: Barbacane, Thornton & Company	
Full financial statements and 990 IRS tax filings can be found at www.delcofoundation.org .	



Thanks to Our Donors for Your Generous Support

Foundations

The Barra Foundation
Bristol-Myers Squibb Foundation
Dale L. Reese Foundation
Delaware County Home Care Association
Fund of The Philadelphia Foundation
Eleanor J. Roth Charitable Trust
Ethel Sergeant Clark Smith Memorial Fund
Margaret and David Langfitt Foundation
Merck Foundation
Nathan Speare Foundation
The Philadelphia Foundation
PNC Foundation
The Scholler Foundation
Tally Foundation
TD Bank, N.A./TD Charitable Foundation
The Weil Family Foundation
Zidek Family Foundation

Organizations and Businesses

Anonymous – 4
ActiveWorx.com
Alpha Chi, Delta Phi Epsilon
American Academy of Pediatrics
American Online Giving Foundation
AmeriHealth Caritas Family of Companies
Anthony J. Carbo, PC
Bank of America
Barbacane Thornton & Company
The Blackburn Giving Fund
BNY Mellon Community Partnership
Brinker Simpson & Co., LLC
Bryn Mawr Trust Company*
Chester Housing Authority
Countryside Consulting
Delaware County Medical Society
Eleanor J. Roth Charitable Trust
The Employees Community Fund of Boeing
Evolution Energy Partners
Exelon
The Franklin Institute
Gallagher
The Haverford Trust Company
The Interpublic Group of Companies
Keystone First*
Ladies Auxiliary of the Firemen of the State of NJ
Main Line Telecommunications*
Make My Donation, Inc.
Marsh & McLennan Shared Services Corp.
Meridian Bank*
Network for Good
Park Power*
PayPal Giving Fund
The Physical Therapy and Wellness Institute
PNC Capital Advisors, LLC
Poppi's Cafe
Radnor Financial Advisors
Reformation Lutheran Church
Salesforce.com, Inc.
Schultz & Williams
Share Our Strength

Soji: Dedicated to the Study of Zen Buddhism Inc.
Stillwater Capital Advisors, LLC
Swarthmore Rotary Charitable Trust
Swarthmore Senior Citizens Association
Two Hearts Dance & Yoga
Unitarian Universalist Church
United Way of Greater Philadelphia and Southern New Jersey
Vanguard Matching Gift Program
Wallingford Presbyterian Church
Warfel Construction
WSFS Bank – Wayne Corporate Office*
* Donors to the HOPE Program via Pennsylvania's DCED Neighborhood Assistance Tax Credit Program

Individuals

Anonymous Donors – 18
Drs. Michael Adesman and Susan Weil
Karen and Mark Aigeldinger
William Kenneth Aiken
Richard Ailes and Shirley Dodson
R. Scott Aldridge, Esq.
Charles Allen
Ronald Anderson
Carole Andracchio
Linda and Scott Armstrong
Zachary Arnold
Sylva Baker
Tim Bard
Andrea Belasco
Peter Benoliel and Willo Carey
Murray and Marie Berstein
Corliss and Clayton Boggs
L. Joy Gates Black, Ed.D., and Dillet Black
Lisa Marie Boschi
John and Claudia Boscoe
Dr. Mark Boudreau
Thurman Brendlinger and Dr. Lisa O'Mahoney
Diane and William Bricker
Carol and Robert Briselli
Gregory Brown and Linton Stables III
Philip H. Brown II
Frederick Browne
Robert J. Bruce
Scott and Gigi Bruce
Harry and Martha Bryans
John Bryck
Jeffry Cadorette
Lisa Roberts Cadorette
Joanne Callahan
David Calloway
Catherine Judge Cardillo
Margaret and Jerry Carpenter
Carol Carr
Sharon and Bill Castillo
Debbie Cella
Eleanor Clark
William and Rita Clark
Amanda Clifton
Cliff and Donna Cohen
Dr. Sandra Cornelius

Eileen Courtney
Joanne Craig and Calvin Brown
Howard and Leslie Cyr
Philip and Karin Damiani
Nicholas and Eileen DeBenedictis
Laura and Vincent DeFlavia
Courtney and Steve Delaney
Donald and Cordelia Delson
Drs. Sara and Christopher DeMauro
Denise Devine
James DiLulio
Carmela Dindor
Robert DiPietro
Anthony and Nancy DiSilvestro
Cyrise L. Dixon
Ceil and Eric Dobkin, M.D.
Michael Donoghue and Gail Fentress Donoghue
DJ Dull-MacKenzie
Robert and Christine Dumont
Carol and Daniel DuPont, D.O.
James Richard Edenfield
Alexandra Lynne Eisel
W. Allen and Ellen Epps
Ron Evans
Ann Falkie
Amy Fantalis
Thomas and Corrine Feyas
Tammy Finsterbusch
Nancy and Bruce Fischer
Matthew Frey
Lisa Gaffney
Mike Galante
Gerry Galgon
Bette Jean Ganter
Jeffrey Garbor
Scott and Linda Garrett
Grant Gegwich and Elizabeth Romaine
Rabbi Jeremy Gerber
Robert and Diane Gerlach
Heather Gibson
Marilyn Gilroy
Alfred and Patricia Glessner
Jessica Good
Melissa Graf-Evans and Jonathan Evans
Ellen and Robert Grill
Kim and Ron Grochowski
John and Gail Grosso
Nicholas Gunther
Trisha and Benjamin Hall
Ellen and Ed Hanway
Sara and Howard Harris
George and Loretta Hassel
Dr. Darcy Hayes and David Sacker
Connie Henry
Diane Herkness
Dr. Annemarie Hirsch and Andrew Hirsch
Cindy Hoffman and Martin Bergman, M.D.
Sid Holmes
Bruce Hunt and Kathryn Mehan
John Hunter
Walter and Nancy Hunter
Dr. James and Joan Husted
Chad Hydro

Gail Jamison
Annie Johnson
Rabbi Louis Kaplan
Nick Kaplinsky and Jennifer Pfluger
Drs. Steven and Lauren Katz
Susan Keller
The Hon. Kevin Kelly
Don and Carol Kennedy
Margaret Killcoyne
Laura and Ted Kirkpatrick
The Hon. Stephanie Klein and
David Landau, Esq.
Deborah Knawby
Joanne and Joel Krackow, M.D.
Lauren Krenzel and Michael Speirs, M.D.
Carol Kroch
Nancy Krody
Nancy Kyle
Frances and Joseph Lastowka, Esq.
Kelvin Lee
Mary C. LeFever
Kathleen Lehman
Levin Family
Mr. and Mrs. Theodore Lewandowski
David Paley Lichtenstein and
Rebecca Silver
Katy Lichtenstein
Robert and Sandra Lichtenstein
Dr. Andrea Liu
Linda Lobach
Sandy and Bruce Lutz, M.D.
James and Maria Lynch
Michael and Sofia Magnavita
Erin Maher
Joyce and Richard Malamut, M.D.
Jennifer Marino
Lori Markusfeld and Jeffrey Cole
Amy Martin, R.N.
Michael and Kristy Mattise
Donna Mayforth
Patricia Ann McCullough
Charles and Maureen McEntee
Katherine McKinstry and Marc Badger
James McLaughlin
Charles McLister
Sarah McMerty
Cynthia Anne McNicholas
Brenda McPherson
Martin and Deb Meenan
Gerald Miller and Lois Frischling
Dr. Joan Mobley and Stacey Mobley
Mike and Cathy Moots
James and Rhonda Mordy
Jeannie and Eleazar Morris, M.D.
Tim and Janice Morris
Susan Sisler Morrison and Chris Morrison
Alison Morse
Jim Moskowitz
Paul Mulholland
Theresa Murdock
Jack and Barbara Nagel
Thomas Nagle
Marie Natoli
Marty Ella Nenno
Daniel Nesbitt
Clover Nicholas
Cheryl and Nathaniel Nichols, Esq.
Raymond J. Nolan III
Joy Oakey

Patricia O'Donnell
Ellen and Pete Oetinger
Nancy and Jim Oetinger
Dr. Donald Oken
Ross Oklewicz
Holly Ostrow
Dr. Joseph and Marilyn Pappano
Henrik and Jennifer Parker
Susan Parker
Rick and Carol Parton
Dr. Homayoon Pasdar and
Cheryl Riley Pasdar
Rachel Pastan
Kathleen Paul
Christopher H. Peifer, Esq.
David and Cynthia Pelton
Ted Peters
Helen Davis Picher and Oliver Picher
Christopher Pike
The Hon. Dominic and Diana Pileggi
Dr. Stephen Platt
Amy and David Pollack
Caroline Pollard
Henry Price
Rebecca Prince
Nancy Prindle
Alan and Carol Prushan
Michele LeFever Quinn
Barbara Rebold
Mark Rebold
John Ricci
Joan K. Richards
Gail Rickenbach
Patricia Rizzo, Esq., and Paul Sisk
Jordan Rodriguez
Patricia Ford Roegner
Ann Rothmann
Teresa Russo
Dr. Cynthia Sacharok and Jeffrey Costa
William Saffici
Mindy and Gary Salkind
Sandra Sborofsky
James and Gena Scanlan
Dr. Phyllis and Alan Schapire
Robert and Mary Ellen Scott
Jan and Don Semler
Andy Sharpe
Jean Shatoff
Frances Sheehan and
Ricardo Gelman, M.D.
Stephanie Sher, Esq.
Dr. Susan Sherr-Pollard
Thomas and Joanie Shoemaker
Dr. Lawrence and Jeanie Shor
Dr. Julie Silverstein and Carlos Sacanell
Laura Sindoni and Angela Riccetti
Christine Siter
Anne Marie Smith
Larry Smoose
Paul and Sherry Smyth
Dr. Harvey and Naomi Spector
Robert Stadnicki
Sonia Stamm
Chris Stanley
Andrew and Penni Starer
Anne Stauffer
Frances Stier
Phillip Strauss
Will and Lizzie Streit

Alice W. Strine, Esq., and Walter Strine, Esq.
Jonathan Sturtz
Peter Sudhop
Janet Sullivan
Ann Swan
Andrew Szabo and Susan Long
Frederick Teitman
Virginia Thompson and Tom Shaffer
Constance and Andrew Tighe
Frank Tobin and Ilene Chester
Ann Torregrossa
Valerie Vagnini
Kelly Van Aken
Hetal Vidwans
Frances Vilella-Velez
Robert Vonsick
Jan Waldauer
Elizabeth and Douglas Wallace
Andrew Ward
Arthur Weisfeld and Virginia Brabender
Gail Whitaker, Esq.
Steve and Elaine White
Jay and Dana Wiley
Harold Wilkinson, M.D.
Karen Wilcox
James Williams, Esq.
Jennell Williams
Karen and Jeff Wolters
Carrie Woody, Esq.
Theresa Wright
Dr. Russell and Judy Young

Funds and Scholarships

The Albright Family Foundation
Alice and Walter Strine Fund
Betty Speare Loughead Fund
The Boggs Family Fund
Burn Care Funds
Cancer Care Funds
Children's Asthma Fund
Cribs for Kids Fund
Crozer-Chester Hospitals Medical Staff
Fund
Debby Yoder Advised Fund
Delaware County Covid-19 Response Fund
Delaware County Memorial Hospital
Medical Staff Fund I
Delco Counts 2020 Census Action Fund
Emergency Medicine Resident Support
Fund
Erb Trust
Estate of Frances Dunn Cherry
Eva Miller Nursing Scholarship Fund
Family Medicine Residency Support Fund
Girls Night Out – Women Helping Women
with Cancer Fund
The Harry and Mary LeFever Family Fund
Hospice and Home Care Funds
The Jenny Ann Parton Scholarship Fund
Kevin Tighe Memorial Scholarship Fund
The Malibu Fund
Parton Dourlet Family Fund
Patrick and Jean Gavin Fund for Youth
Development in Chester
Philadelphia Cyberknife Medical &
Scientific Fund
President's Fund
Susan Reiley Memorial Fund
Thomas Wolfarth EMS Training Fund

New Funds

Catherine F. Corson Fund
Chairman's Fund
Deerbrook Designated Funds
The Deerbrook Boys & Girls Club of
Chester Designated Fund
The Deerbrook Chester County Food
Bank Designated Fund
The Deerbrook City Team, Chester,
Designated Fund
Delaware County Memorial Hospital
Medical Staff Fund II
Delaware County Public Health Fund
The Delco Greater Good Fund
The Fund for Food Security
The Louis and Margaret Sudhop
Charitable Fund
The Mattise Family Charitable Fund
Strine Musical Performance Fund
The Turtle & Owl Fund

Nonprofit Management Services

Circle of Giving 2020
Library Foundation of Delaware County
Young Entrepreneurs Academy (YEA!)

Government Grants

Federal Government

U.S. Department of Health and Human
Services:
Health Resources and Services
Administration, Maternal and Child
Health Bureau – Healthy Start
Substance Abuse and Mental Health
Services Administration – STOP ACT

State Government

Pennsylvania Department of Agriculture:
WIC Farmers' Market Nutrition Program
Pennsylvania Department of Community
and Economic Development:
Neighborhood Assistance Program
Census 2020 Outreach Grant Program
Pennsylvania Department of Health:
Pennsylvania Special Supplemental
Nutrition Program for Women,
Infants, and Children – WIC
Pennsylvania Departments of Education
and Human Services, Office of Child
Development and Early Learning:
Nurse Family Partnership
Maternal, Infant, and Early Childhood
Home Visiting Program

We Are Grateful for Gifts in Honor of:

Daniel and Sabrina Aiken
Philip and Debra Aiken
Beverly Alexandre
Robert J. Bruce
Carver Family
Christopher Clyde
Donna Cohen
Doug and Judy Cook
Anne Donnelly, M.D.
Dr. James & Mary Gibson
Karin Goldman
Edward Gunther
Hannigan Family
Violet Mansky
Amy and Sean Martin
John and Tayler Moots & Family



Delco Arts Week

The Foundation for Delaware County has sponsored Delco Arts Week, an annual fall celebration of the county's arts and culture organizations, since 2019. In 2020, the Delaware County Arts Consortium pivoted to an all-virtual format, Delco Arts Week@Home, which featured online offerings such as music, film, workshops and behind-the-scenes interviews from over 60 participating organizations. For 2021, Delco Arts Week returned to primarily in-person events, including outdoor festivals such as the Lansdowne Arts on the Avenue Festival, the Sharon Hill Art and Culture Commission's Rhythm, Blues, and Art Fall Festival, and the Upper Darby International Festival.

Sue and Glenn Ortley
Mark Paikoff
Helen and Oliver Picher
Russ Roegner, Ph.D.
RTSD Colleagues
Aimee Rubin
Natalie Rubin
Schaefer Family
John Schaefer
Frances Sheehan
Zietz Family
Ziviello Family

We Are Grateful for Gifts in Memory of:

Genevia Barnett
Margaret Barnum
George and Dolores Bosler
Elizabeth Bradford
Joseph P. Bradley, Sr.
Carol Brown
Madeline Calvano
Rita Curry
Irene Dodd Davis
Peg Donohue
Zita Fox
William and Robert Fratick
Raymond Garbor
Christopher Gegwich
Francis Gillon

Elizabeth Giuliano
Michael Gordy
Dr. Harold Haft
Elaine Kelly Hasson
Donald Higgins
Theresa Winston Johnson
Edmond Jones
Archibald King
Gordy Krysiak
Forrest Lang
Bruce Lord
Carol Maiden
Henry Matteis
Elizabeth McConnell
Mary Ann Meckfessel
Bliss Michelson
Barbara Miller
David Morrow
Cathleen Moyer
Marie and Joe Mundy
Elizabeth Murtha
Peggy O'Donnell
Lois Sellers
Tony Verna
Judy Wallgren
Grace Winslow

Volunteer Leadership

FY22 Board of Directors

Dominic F. Pileggi, Chair
Corliss Boggs, Vice Chair
Cyrise L. Dixon, Secretary
Ted Peters, Treasurer
Michael B. Adesman, M.D.
Nicholas A. Aponte
L. Joy Gates Black, Ed.D.
Robert J. Bruce
Donald W. Delson, Esq.
Daniel C. DuPont, D.O.
H. Edward Hanway
Michael B. Magnavita, CPA
Nathaniel C. Nichols, Esq.*
Joan K. Richards
Thomas A. Shoemaker
Robert N. Speare, Esq.
Alice W. Strine, Esq.
Kelly Thornton
Malcolm J. Yates
Kate Zidek

Advancement Committee

Robert N. Speare, Esq., Chair
Michael B. Adesman, M.D.
Nicholas A. Aponte
Cyrise L. Dixon
Robert Dumont
Michele Garrity
Michael B. Magnavita, CPA
Kelly Thornton
Malcolm J. Yates

Audit Committee

Kelly Thornton, Chair
H. Edward Hanway
Michael B. Magnavita, CPA

Finance Committee

Ted Peters, Chair
Michael B. Adesman, M.D.
Scott Bruce
Donald W. Delson, Esq.
H. Edward Hanway
Michael Mattise
Joan Dawson McConnon*

Governance Committee

Alice W. Strine, Esq., Chair
L. Joy Gates Black, Ed.D.
Corliss Boggs
Robert J. Bruce
Donald W. Delson, Esq.
Daniel C. DuPont, D.O.

Senior Staff

Frances M. Sheehan, President
Joanne D. Craig, Chief Impact Officer
Laura DeFlavia, Chief Financial Officer
Ellen Y. Grill, Vice President for
Advancement and Philanthropic Services

Grantmaking Committee

Corliss Boggs, Co-Chair
Robert J. Bruce, Co-Chair
Nicholas A. Aponte
Michele Daly
Cyrise L. Dixon
Vince Gordon
Lydia Hammer
Nathaniel C. Nichols, Esq.
Helen Davis Picher
David Pollack, M.D.
Alice W. Strine, Esq.
Malcolm J. Yates
Kate Zidek

Planning Committee

Donald W. Delson, Esq., Chair
L. Joy Gates Black, Ed.D.
Robert J. Bruce
H. Edward Hanway
Thomas A. Shoemaker

Gift Acceptance Subcommittee

Robert N. Speare, Esq., Chair
Laura DeFlavia
Ellen Grill
Ted Peters

Investment Subcommittee

H. Edward Hanway, Chair
Scott Bruce
Donald W. Delson, Esq.
Michael Mattise
Allison Mortensen

Program Subcommittee

Robert J. Bruce, Chair
Cyrise L. Dixon
Lydia Hammer

COVID-19 Advisory Committee

Michael B. Magnavita, CPA, Chair
L. Joy Gates Black, Ed.D.
Cyrise L. Dixon
Grant Gegwich
Joseph McLaughlin
Robert Simpson
Kelly Thornton
Malcolm J. Yates
Brian Zidek

Golf Committee

H. Edward Hanway, Co-Chair
Robert N. Speare, Esq., Co-Chair
Robert M. Barbacane
Corliss Boggs
Andrew Brenner
Brian Crimmins
Daniel C. Hagan
Kevin Hagenberg
Rocco P. Imperatrice, Esq.
Andrew McMenamin
Frances M. Sheehan
Thomas A. Shoemaker
John Spagnola
Robert F. Stiles

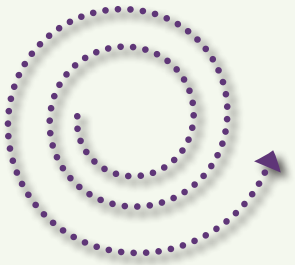
Professional Advisors Council

Edwin R. Boynton, Esq.
Betsy J. Joyce, CPA
Guy F. Matthews, Esq., CLU
Michael Mattise, CFP, CFS, CAIA
Cynthia A. McNicholas, Esq.
Tuan Nguyen
Christopher H. Peifer, Esq.
Laura N. Solomon, Esq.
Robert F. Stiles
Donna Stilwell, CPA, CFE
Douglas A. Swope, CFP

Racial Equity Task Force

Cyrise Dixon, Co-Chair
Akesha Gainer, Co-Chair
Corliss Boggs
Jordan Casey, Esq.
Joanne Craig
Donald W. Delson, Esq.
Ellen Grill
Michael B. Magnavita, CPA
Thomas A. Shoemaker
Kim Walker
Ifeoma Aduba, Facilitator

*FY21 Member



The foundation was created to promote and facilitate charitable giving and to build a permanent endowment for the community. We are dedicated to helping you support the causes you care about. We offer several types of funds and can help you establish one that will allow you to choose when to give, how much to give and for what purpose. While our community grantmaking is focused on Delaware County, charitable funds created by donors may support nonprofit organizations anywhere in the United States.

OUR FUND ADVISORS ENJOY:

ACCESS

to our broad knowledge of Delaware County’s nonprofit organizations and the needs of our county.

PARTICIPATION

in the grantmaking process for donor-advised funds they establish.

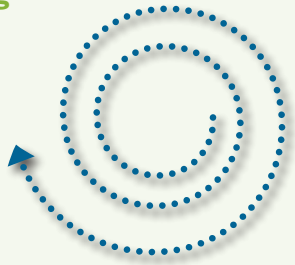
FOUNDATION MANAGEMENT

of funds and oversight of all investments, which includes maintaining appropriate tax records and conducting due diligence processes in a timely and effective way.

Ready to start a fund that allows you to support the causes close to your heart? Contact Ellen Grill at egrill@delcofoundation.org or 610-744-1015 for more information about giving opportunities in Delaware County.

“Giving back is an integral part of living in a community. The Foundation for Delaware County provides a way to support causes that are making a difference locally. The foundation is building a permanent civic endowment to identify and respond to community needs, yet they are also very involved in the programs and nonprofits they support. Donors can help the foundation meet pressing needs in the most impactful way possible.”

–Michael Mattise, Senior Wealth Advisor and Chief Investment Officer, Radnor Financial Advisors, LLC, and Investment Committee Member, The Foundation for Delaware County





The Foundation for Delaware County is on a mission
to create a vibrant future for all who call
Delaware County their home by

Promoting generosity in and for the people of our county.

Improving the well-being of our residents.

Energizing participation and partnership across our communities.



www.delcofoundation.org

200 E. State St., Suite 304, Media, PA 19063

