



Creating Opportunities for Delaware County



The Foundation for Delaware County's Report to the Community, Fiscal Year 2019

YOUR COMMUNITY, YOUR FOUNDATION

The Mission of the Foundation is:

To create a vibrant future for Delaware County by promoting generosity in and for the people of our county, improving the well-being of our residents, and energizing participation and partnership across our communities.



The Foundation for Delaware County is one of more than 800 community foundations across the United States. A community foundation is a charitable organization created by and for a community of people. Community foundations are leaders in promoting and encouraging philanthropy and in addressing issues that improve the quality of life in a specific geographic area. We are here for the long term, working with people like you who want to make a difference in Delaware County now and forever. We are a driving force in philanthropy, creating opportunities for you and your charitable neighbors by:



INVESTING AND MANAGING
charitable funds created by local individuals, families and organizations

HELPING DONORS
bring their philanthropic vision to life, creating a legacy for years to come



STRENGTHENING NONPROFITS
through charitable grants, training and other resources

PROVIDING LEADERSHIP
and insight on important issues in our region

What Can the Foundation Do for You?

No matter what your role is in our community, we are here to help you make an impact. Together, we are a greater force for good.





Creating Opportunities to Move Delaware County Forward



Dear Delaware County Supporter and Partner,

A recent Delaware County financial report states that the county’s unemployment rate is below the state average, and yet there are 17,000 children living in abject poverty. Several promising economic projects are in development around the county, but more than 1,000 Delaware County teens (17 percent) will not graduate from high school in four years – if at all. We’re a vibrant, diverse county with tremendous opportunities, but inequities inhibit us from moving forward.

Mindful of these realities, this year was an ambitious one for The Foundation for Delaware County. In addition to operating several public health programs that serve over 10,000 Delaware County residents each year, we awarded more than \$1.5 million in grants, scholarships and charitable care. Our review of the funding requests served as a reminder of the many local organizations worth investing in. We learned there are a wide variety of ways to have an impact, and when we bring different community partners together that impact can be exponential.

With an eye to do more than investing grant dollars in FY19, we commissioned a study of the training needs of our county’s nonprofits. Nonprofit representatives expressed a desire for management training, business development and peer support. A program tailored to these needs is now in the works. Stay tuned!

We’ve also explored a variety of cooperative relationships with other funders, including county government and other area foundations. To promote collaboration and share information, we convened the Delaware County Funders Group. Meeting topics have included the 2020 Census, improving college access services in Delaware County, and how philanthropy can best strengthen local nonprofits.

Through our efforts to learn more and increase our impact in Delaware County, we’ve looked for every opportunity to make our donors’ philanthropic efforts as meaningful as possible. If you, a friend, family member, colleague or client plan to set up a charitable fund, trust or private foundation, or revise an estate plan to include charitable giving, please contact us. We can help you find an efficient and affordable way to do so. The foundation is here to assist donors of every size and we would be honored to work with you to make your philanthropy worthwhile.

Let’s move Delaware County forward together.

Robert N. Speare, Esq.
Chair, Board of Directors

Frances M. Sheehan
President

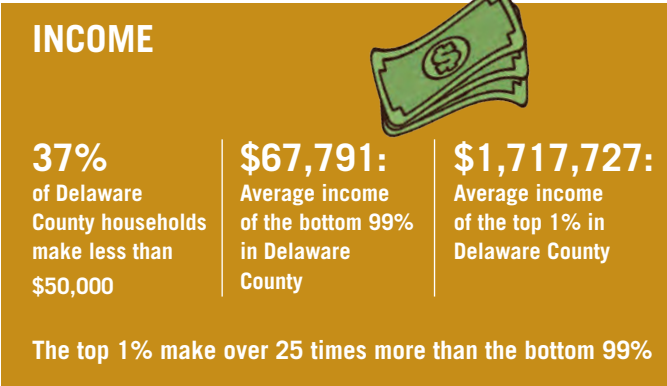
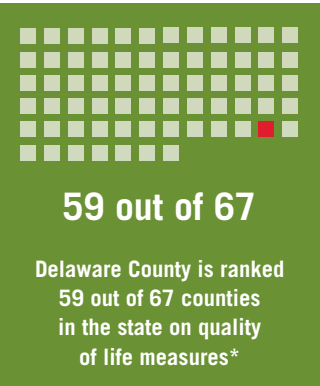
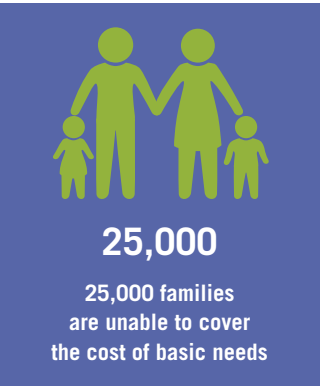
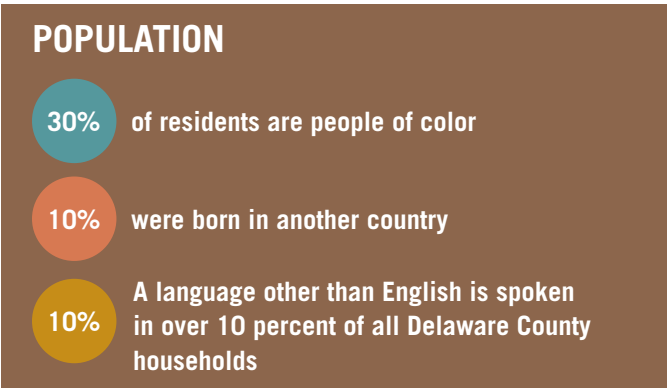
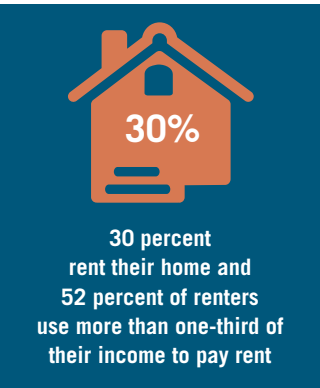
Delaware County by the Numbers

Delaware County, a suburb of Philadelphia with a population of 560,000, consists of 49 municipalities with residents who have a strong sense of community pride. It is a county of towns, suburbs and countryside immediately adjacent to — and intimately connected with — the nation’s sixth largest city, Philadelphia. The county is densely settled, the fifth most populous in the Commonwealth, yet the third smallest in land area.

It is also a county with residents who face serious challenges. While the county is ranked fourth-highest in the Commonwealth in per capita income, it is home to more than 50,000 people living in poverty and to neighborhoods where multigenerational poverty is endemic. Although the county compares well with peers nationally on many measures — from educational attainment to primary care access — it ranks unfavorably on a range of others, including certain crimes, teen pregnancy, low birth weight, death from HIV, heart disease and stroke.

For Delaware County’s 560,000 residents:

These numbers are just a few of the statistics that have been guiding the foundation’s grantmaking priorities. We’re here to help generous Delaware County residents, nonprofits and other philanthropists and funders address the needs of the county.



*Quality of life measures include those living in poor or fair health, the number of poor physical and mental health days, and the number of babies born with low birthweight.

Charity Begins at Home:

Mary and Harry LeFever Family Fund



Mary LeFever with students at The Walden School

Children in Delaware County are enjoying opportunities they wouldn't have had without the generosity of Mary LeFever.

Mary LeFever has lived in Delaware County all her life. She and her husband, Harry, who were both teachers, lived on a modest income. After attending a workshop about Maria Montessori and her approach to education, Mary was inspired to establish The Walden School, which opened in 1967 and continues to serve students from pre-school through grade 8 in its current location on Providence Road in Media. Mary was supported in her efforts by a friend who believed in her vision and shared her philanthropic spirit.

Mary has always felt that charity begins at home and is devoted to giving back to Delaware County where she can see how her favorite charities are having an impact. Approaching her 90th birthday, Mary recently decided it was time to involve her three daughters — Denyse, Michele and Colette — in planning her legacy and passing her generous spirit on to her children and grandchildren.

Discussions first focused on establishing a family foundation. However, after some thorough research, Mary and her daughters decided that starting a fund at a community foundation would be the best option for their family, leaving legal and administrative tasks to the foundation. When Mary and her daughter Michele learned about the foundation, they knew it would be the ideal partner to fulfill Mary's philanthropic goals and dreams now and in the future. Mary decided to establish a donor-advised fund to support the causes most important to her, including the longevity of the Walden School, Delaware County Community College where Harry worked, the Alzheimer's Association (Harry passed from Alzheimer's in 2008), Untours Foundation and more.

“ I am grateful that I have three daughters who want to support my wishes and continue my legacy. With our donor-advised fund, our family can support other families who haven't been blessed with the same opportunities as my family.”

Giving Now and for the Future: Creating Your Legacy for Delaware County

The foundation was created to promote and facilitate charitable giving and to build a permanent endowment for the community. While our community grantmaking is focused on Delaware County, charitable funds created by donors may support nonprofit organizations anywhere in Pennsylvania or the country.



How You Can Partner With Us to Create Opportunities for Delaware County

The foundation is dedicated to helping you support the causes you care about. We offer several types of funds and can help you establish one that will allow you to choose when to give, how much to give and for what purpose.

For example, a donor-advised fund (DAF) is a flexible vehicle that allows you to take an active part in grantmaking. If your interests change over time, your

grantmaking can, too. You can make recommendations about grants to any qualified nonprofits in Delaware County or throughout the country. You can partner with us to focus on the causes and projects you care about, tapping into our expertise in the local nonprofit community.

If you wish to involve your children in your philanthropy, like Mary LeFever, a DAF offers a less expensive alternative than creating a private family foundation, and it demonstrates the importance of providing for the future of our community. Because you recommend grants to the organizations most meaningful to

you, a DAF is an especially personal way to make an impact on our community and people in need — now and in the future.

Whether you care deeply about the arts, health care, education, human services, the environment, or another cause, we have flexible giving options that can help you do good in the communities you love. To learn more about the funds we offer, please see the inside back cover and call us to learn about giving opportunities in Delaware County. Contact Ellen Grill at egrill@delcofoundation.org or 610.744.1015.



Bequests are among the most popular forms of planned giving. A bequest allows you to make a provision in your will or living trust for a gift to the foundation. This gift may be a specified dollar amount or percentage of your estate. It can be unrestricted or established as a named fund of your choice. Bequests enable you to reduce your estate taxes while supporting your community.

Creating Opportunities for Impact With Strategic Grantmaking

The foundation supports its grantmaking partnerships with a growing, permanent charitable endowment for Delaware County. We invest that endowment wisely for the long term, and each year we use a portion of the endowment, supplemented by generous charitable contributions from people like you, to make gifts to nonprofits serving our community.

A Request for Proposals in April 2018 launched the foundation’s first competitive grantmaking effort. The grants awarded in October 2018 helped advance the foundation’s goal to improve the well-being of residents in Delaware County. In all, we awarded \$1,165,000 to 42 nonprofit organizations through the competitive grantmaking cycle. An additional \$335,000 was awarded through grants, scholarships and charitable support from other restricted funds at the foundation.



FY19 Grants Awarded / Investing in Partnerships for Exponential Impact

To improve physical and behavioral health services for Delaware County’s children:

Chester Arts and Cultural Center Corporation	\$20,000
UAC/Chester Community Coalition	\$47,500 3-year grant
From the Estate of Frances Dunn Cherry	
Chester Eastside, Inc.	\$10,000 2-year grant
Chester Upland Youth Soccer	\$15,000
Child Guidance Resource Centers	\$25,000
From the Estate of Frances Dunn Cherry	
Delaware County Board of Fire and Life Safety	\$32,000
From the Thomas Wolfarth EMS Training Fund and Restricted Funds for Burn Treatment and Education	

Domestic Abuse Project of Delaware County, Inc.	\$30,000
EasterSeals of Southeastern Pennsylvania	\$20,000
The Elwyn Foundation	\$20,000
Family Support Line of Delaware County	\$45,000 3-year grant
From the Estate of Frances Dunn Cherry	

J. Lewis Crozer Library	\$20,000
Kids Smiles	\$25,000
Public Citizens for Children and Youth	\$7,500
Vetri Foundation for Children (Vetri Community Partnership)	\$10,000

Give Kids a Smile

Nearly 11 percent of Delaware County children did not receive a dental exam in the last year, the highest rate in the five-county region. Many children don’t see a dentist because they do not have health insurance. Students with poor oral health are three times more likely to miss school because of dental pain. Public Citizens for Children and Youth (PCCY) is trying to close this gap. During the week of April 15, they enlisted nine dentists from the region to provide free dental care to at least 170 Delaware County children at the 2019 Give Kids a Smile event with funds provided by the foundation.



To support preventive health services for vulnerable and low-income Delaware County residents:

ChesPenn Health Services	\$60,000
Community Volunteers in Medicine	\$20,000
Philadelphia Freedom Valley YMCA	\$25,000
Restricted Funds for Cancer Related Care	
Unite For Her	\$35,000
Funded from Girls’ Night Out and Restricted Funds for Cancer Related Care	
Widener University	\$20,000



To improve maternal and birth outcomes in Delaware County:

(In addition to the foundation’s internal maternal and children’s health programs - see page 10)

Pettaway Pursuit Foundation	\$50,000 2-year grant
-----------------------------	--------------------------

To support advocacy and systems change for improved health service delivery for Delaware County’s children:

CASA Youth Advocates, Inc.	\$100,000 2-year grant
Pennsylvania Health Law Project	\$35,000
Pennsylvania Partnerships for Children	\$20,000
Public Citizens for Children and Youth	\$25,000
Partially Funded by the Emergency Medicine-Toxicology Fund	

To address Delaware County’s substance use including the opioid epidemic:

Be Proud Foundation	\$60,000 3-year grant
City Team	\$15,000
Mid-Atlantic Mothers’ Milk Bank	\$10,000

Driving Delaware County forward:

WHYY	\$25,000
Underwriting reporting on Delaware County	

Preparing Delaware County’s students for success in college:

Chester Education Foundation	\$50,000
------------------------------	----------

Delaware County Community College	\$20,000
-----------------------------------	----------

CCSA Foundation (formerly The Chester Fund for Education and the Arts)	\$40,000
------------------------------------------------------------------------	----------



Partnering with Delco Arts and WHYY

Delco Arts Week

A gift made to the Greater Philadelphia Culture Alliance helped launch the first ever inaugural Delco Arts Week in Sept. 2019 with over 70 events at more than 30 venues throughout the county.

WHYY

It’s not so easy to get local news these days. To provide additional news reporting in Delaware County, the foundation initiated a new relationship this year with WHYY Public Radio. We underwrite their Delaware County reporting and inform listeners about the many opportunities offered by the foundation to invest in our community.

Community Volunteers in Medicine and Surrey Services
Partner to Invest in Seniors

Three years ago, Community Volunteers in Medicine (CVIM) identified low fixed-income, uninsured/under-insured senior citizens as having the greatest unmet need for access to affordable dental care in our region. To increase access to preventative and restorative dental services for seniors, CVIM leveraged a community partnership with Surrey Services to create a satellite dental office at one of the Surrey locations. All seniors have free, convenient access to a dental hygienist and dentist in a place the seniors frequent for meals, programs and learning.

With a grant from the foundation, CVIM at Surrey Senior Services was able to expand their outreach and extend the hours of the dental hygiene program to serve additional at-risk seniors in Delaware County.



To support and improve access to hospice and homecare services in Delaware County:

With funding from Restricted Funds for Hospice and Home Care, including The Philadelphia Foundation's Delaware County Home Care Fund

Main Line Health Homecare & Hospice Foundation	\$20,000
Mercy Home Health	\$30,000
Pennsylvania Health Access Network	\$20,000
Surrey Senior Services	\$40,000
Senior Community Services	\$48,000
Wayne Senior Center	\$10,000



Strengthening Delaware County's nonprofit community:

Boys and Girls Club of Chester	\$10,000
Chester Community Improvement Project	\$10,000
Delaware County Literacy Council	\$15,000
Fair Housing Council of Suburban Philadelphia dba Housing Equality Center of Pennsylvania	\$15,000
Family Support Line of Delaware County	\$10,000
Greater Philadelphia Cultural Alliance	\$15,000
Underwriting Delco Arts Week	
Media Fellowship House	\$15,000
Riverfront Alliance of Delaware County	\$20,000
The Salvation Army	\$15,000

Donor-advised fund grants:

Girls Night Out	\$10,000
Crozer-Chester Hospitals Medical Staff Fund and Delaware County Memorial Hospital Medical Staff Fund	
Natural Lands	\$10,000
Albright Family Charity Fund	

The Pennsylvania Ballet	\$5,000
Alice and Walter Strine Fund	
Saint John Fisher Catholic Church	\$10,000
Albright Family Charity Fund	
Saved Me	\$5,000
Albright Family Charity Fund	

Other grants and charitable care provided from restricted funds:

Burn Treatment and Education	\$10,696
Cancer Related Care	\$118,839
Medical and Health Education	\$51,643
Hospice and Home Care	\$21,993

Scholarships:

Kevin Tighe Memorial Scholarship Awards	\$1,500
Hala Abdelmessih	
Charron Thompson	
Widener-Crozer Allied Health Program for Radiologic Technology	
Eva Miller	\$10,000
Nursing Scholarships	
Ijeoma Innocentia Maduagwu	
Alyssa Christine Raftovich	
Delaware County Community College's Nursing Program	
Mei Lin Chen-Lim	
Widener University School of Nursing	

Other charitable and nonprofit support:

GRANTEE SPOTLIGHT

Partnering to Give Our Neighbors With Cancer the Best Possible Care

With funds provided by generous individuals at events like Girls Night Out, or with the support of other charitable entities like the B.A.C. Cancer Transportation Fund, the foundation helps our neighbors who are living with cancer in a variety of ways. We provide funding for mammograms and screenings for low-income patients, and grants to life-changing nonprofits like Unite for HER.

Since its establishment as a nonprofit organization in 2009, Unite for HER has bridged a gap for breast cancer patients, focusing on wellness initiatives that positively impact their health.

When Unite for HER founder Sue Weldon was diagnosed with breast cancer in 2004, she began searching for information on therapies that would complement the medical treatments she was receiving. Sue recognized an opportunity to provide fully funded support services to women suffering from debilitating side effects and to address their emotional, spiritual and physical needs.

Through the Unite for HER Wellness Day program, breast cancer and ovarian cancer patients learn about the benefits of complementary therapies. The program creates a personal plan for incorporating these services into treatment and recovery. In a small group setting, trained professionals lead discussions on the uses and benefits of acupuncture, massage, Reiki, yoga, meditation, nutrition, professional counseling (including sexual health) and caregiver support. This year, Unite for Her will treat more than 1,800 women in 30 cancer centers, including sites at Mercy Fitzgerald Hospital in Darby and Crozer-Keystone Health System in Broomall and Chester.

We are honored to support Unite for Her through our restricted cancer funds and through the Girls' Night Out (GNO) Women Helping Women with Cancer Fund. Last year in Delaware County, we were able to support 175 women participating in the Unite for Her wellness program.



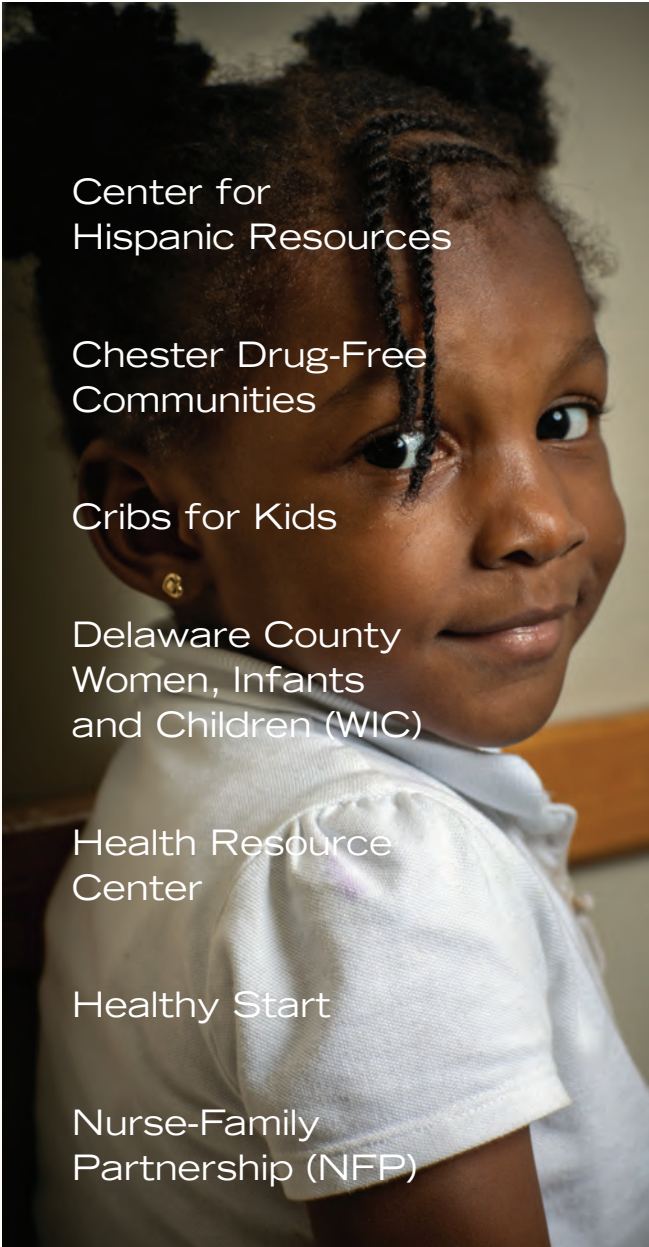
Last year, Girls' Night Out, a volunteer organization, distributed \$55,976 to assist Delaware County women living with cancer.

The foundation is proud to receive support from the Barbara A. Colameco Cancer Transportation Fund, which allows us to provide transportation for cancer patients. Over the past year, this fund provided 648 rides to help 41 patients in Delaware County get to their needed cancer treatment. The B.A.C. Cancer Transportation Fund was started by Barbara A. Colameco after she learned during her own cancer treatment that some patients were unable to get to their appointments.

If you would like to start a fund to support people with cancer or another important issue close to your heart, please contact Ellen Grill at 610-744-1015.

Grand Total Grants, Scholarships and Charitable Care: \$1,499,617

For more details about these grants, visit us online: delcofoundation.org



Center for
Hispanic Resources

Chester Drug-Free
Communities

Cribs for Kids

Delaware County
Women, Infants
and Children (WIC)

Health Resource
Center

Healthy Start

Nurse-Family
Partnership (NFP)

At its inception in 2016, The Foundation for Delaware County inherited several outstanding public health programs that have been addressing critical needs in the county for many years.

INVESTING IN THE EARLY YEARS

Our Women and Children’s programs offer support that addresses more than a mom’s physical health. They focus on mental health, parenting and the physical and emotional health of babies. The programs also help women achieve self-sufficiency by advising them on how to set goals to obtain employment, education and more.

In FY19, the Nurse-Family Partnership program was awarded additional state funding to enroll pregnant moms struggling with substance use. With this funding, nurse home visitors now educate each client on the harmful effects of alcohol, narcotics and tobacco on a healthy pregnancy. The same grant also provided funding for a licensed social worker to offer Parent Cafés, physically and emotionally safe spaces for structured conversations about the challenges and victories of raising a family. In addition, all clients are screened for depression. Those who have major depressive disorder and qualify for the foundation’s Moving Beyond Depression program are offered 15 visits with a trained therapist on staff who uses cognitive behavioral therapy and ensures the clients are connected to the mental health care they need.

As a community foundation, we believe collaborative partnerships are critical to moving Delaware County forward.

Collaboration with external partners offers major benefits for foundation program participants, because often one program cannot meet the needs of many of our clients. Healthy Start, which was recently renewed in March with a five-year, \$5 million federal grant, has also entered into a new formal partnership with the Chester Housing Authority. Foundation staff will provide recommendations for 20 families to apply for either housing choice vouchers or public housing. Our case managers will help them with the application process, as well as provide them with tenant rights education and

life skills training. The education and training will help the families become successful tenants and



learn how to experience long-term housing stability and self-sufficiency. Safe, stable, secure, quality housing is a need for our program participants and a significant determinant of health. We are excited to launch this new collaborative initiative with the Chester Housing Authority to address this critical gap in the safety net for families.

Advocating for food security: WIC benefits are critical to more than 9,000 participants in Delaware County.

Many families are struggling financially in Delaware County. The Women, Infants and Children (WIC) program provides



supplemental food and formula so that families can put healthy food on their table and save money for housing, medicine, clothing and other necessities. Because our WIC clinics are not serving all those in the county who are eligible for WIC benefits, the foundation is partnering with WIC colleagues around the state to advocate for more funding and to educate legislators on the importance of the WIC program. Other partners in this effort include the PA Hunger Action Coalition, PA Food Funders Collaborative, the Governor’s Food Security Partnership and PA Partnerships for Children. Without increased funding, recruiting and serving eligible families for WIC services will be difficult.



“ The Healthy Start program is crucial for pregnant women, families and children. I believe that all children deserve a strong start in life, regardless of their circumstances. By laying a solid foundation that includes health, nutrition, safety and education from the day they are born, we can ensure every child can grow to their full potential.”

– Senator Bob Casey, senior U.S. Senator from Pennsylvania

If you are interested in learning more, please reach out to Joanne Craig, Vice President for Programs, 610-744-1010.

FISCAL YEAR 2019 FINANCIAL REPORT



The foundation takes investing your funds very seriously. We seek the best possible risk-adjusted return – maximizing dollars available to fund critical work in Delaware County today, while prudently stewarding and growing those resources to maintain an enduring source of philanthropic capital to meet emerging needs well into the future. We are grateful to you for entrusting your funds with us and remain committed to responsible stewardship, transparency and public accountability in all that we do.

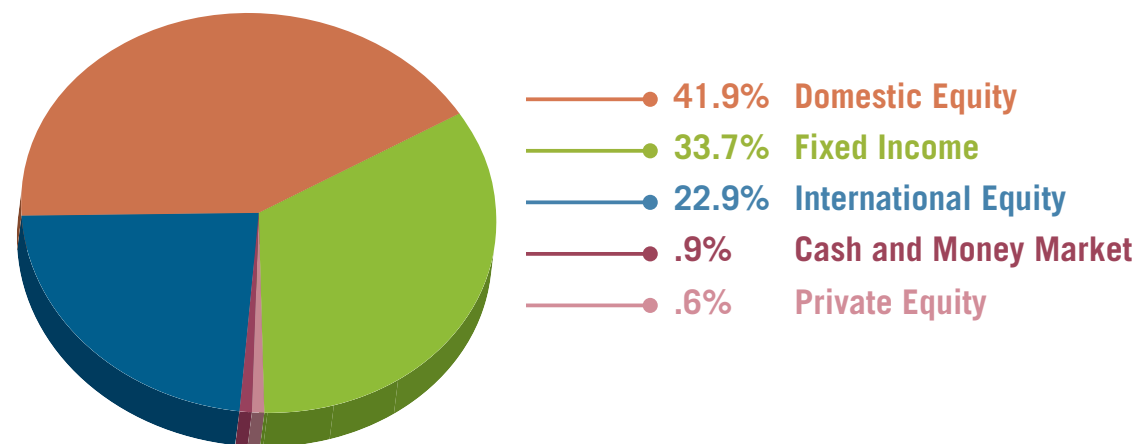
Over the long term, the performance objective for the investment portfolio is to achieve an average total rate of return that is equal to or greater than the foundation's expected spending, plus inflation. Additionally, it is expected that the annual rate of return on investments will be commensurate with the prevailing investment environment. The investment portfolio yielded a 7.54 percent return in the fiscal year, beating the blended benchmark. Since inception, the investment portfolio has returned 8.36 percent, also outperforming the blended benchmark.

Thank you to our donors for entrusting us with their charitable dollars. Your collective giving helps us transform our region for the better and enrich the quality of life throughout Delaware County. Together we will continue to support many wonderful causes throughout the community.

Ed Hanway
Chair, Finance Committee

Ted Peters
Chair, Investment Committee

Investment Asset Allocation on June 30, 2019



Statements of Financial Position as of June 30, 2019 and 2018

	2019	2018
ASSETS		
CURRENT ASSETS		
Cash and cash equivalents	\$ 2,253,684	\$ 2,412,991
Cash surrender value of life insurance	204,510	221,665
Pledges receivable, net	51,866	149,799
Grants receivable	511,764	1,017,134
Prepaid expenses	106,259	117,657
Other current assets	5,100	5,100
Total Current Assets	3,133,183	3,924,346
NONCURRENT ASSETS		
Investments	58,789,811	55,356,893
Beneficial interest in perpetual trusts	1,795,399	2,078,230
Property and equipment, net	64,838	67,707
Total Noncurrent Assets	60,650,048	57,502,830
TOTAL ASSETS	\$ 63,783,231	\$ 61,427,176
LIABILITIES AND NET ASSETS		
CURRENT LIABILITIES		
Accounts payable and accrued expenses	\$ 487,122	\$ 377,370
Grants payable	256,000	115,000
Annuities payable, current	20,797	20,797
Environmental liabilities, current	30,000	30,000
Total Current Liabilities	793,919	543,167
NONCURRENT LIABILITIES		
Annuities payable, noncurrent	172,881	178,641
Environmental liabilities, noncurrent	178,908	209,808
Accrued paid time off	124,423	118,056
Insurance liabilities	256,561	269,111
Total Noncurrent Liabilities	732,773	775,616
NET ASSETS		
Without donor restriction:		
Equity in property and equipment	64,838	67,707
Undesignated funds	55,589,846	53,235,973
Total Without Donor Restriction	55,654,684	53,303,680
With donor restriction	6,601,855	6,804,713
Total Net Assets	62,256,539	60,108,393
TOTAL LIABILITIES AND NET ASSETS	\$ 63,783,231	\$ 61,427,176

Statement of Activities Year Ending June 30, 2019

	2019 TOTAL
PUBLIC SUPPORT, REVENUES, AND GAINS	
Contributions	\$ 503,968
Grants from government agencies	4,391,526
Special events, net of expenses	101,463
Miscellaneous income	21,876
Changes in value of trusts	16,799
Investment income	3,716,794
TOTAL PUBLIC SUPPORT, REVENUES, AND GAINS	8,752,426
EXPENSES	
Program services	6,117,143
Management and general:	
Administration	780,841
Development	360,478
Transition costs	308,310
TOTAL EXPENSES	7,566,772
CHANGE IN NET ASSETS FROM OPERATIONS	1,185,654
NONOPERATING REVENUES (EXPENSES)	
Contributions from Crozer-Keystone Health Systems	962,492
CHANGE IN NET ASSETS	2,148,146
NET ASSETS, BEGINNING OF YEAR	60,108,393
NET ASSETS, END OF YEAR	\$ 62,256,539

Financial statements are also available at www.delcofoundation.org

Investment Advisors: PFM | Trustee Bank: U.S. Bank | Operating Bank: TD Bank
Accounting Services: CliftonLarsonAllen, Countryside Consulting, Inc. | Auditors: Barbacane, Thornton & Company

Many thanks to our fiscal year 2019 donors and supporters for investing in Delaware County.

Foundations

Connelly Foundation*
Dale L. Reese Foundation*
Fhal Foundation
Jack and Jill of America Foundation*
Nathan Speare Foundation*
Susan G. Komen Philadelphia*
Tally Foundation
TD Bank, N.A./TD Charitable Foundation*
The Community's Foundation
The Philadelphia Foundation*
Weil Family Foundation*
William Goldman Foundation*
William Penn Foundation

Organizations and Businesses

Access Matters*
Acero Precision
Alliance Care Specialists*
Alliance HealthCare Services
AllState Giving Campaign*
American Academy of Pediatrics
AmeriHealth Caritas Family of Companies
Associates in Hematology-Oncology*
Barbacane Thornton & Company*
Barbara A. Colameco Cancer Transportation Fund*
Bedazzled Boutique
Brinker Simpson & Company*
Buchanan Ingersoll & Rooney*
Cardiology Consultants of Philadelphia*
Carman Lincoln
Charles Cross Architecture*
Chester Water Authority*
Child Guidance Resource Centers*
Children's Hospital of Philadelphia*
CliftonLarsonAllen*
Consultants in Medical Oncology & Hematology*
Countryside Consulting*
Cozen O'Connor*
Crozer-Chester Hospitals Medical Staff Fund*
Delaware County Community College*
Delaware County Memorial Hospital Medical Staff Fund*
Drexelbrook Associates
Duane Morris
East Stroudsburg Savings Association
Evco Industries*
Evolution Partners*
Exelon Corporation*
Fizzano Family of Associates, Realtors
Fox Rothschild*
Franklin Mint Federal Credit Union*

Gallagher*
Geonetric*
Giant Food Stores*
Harrison Group
Hatzel & Buehler*
Herman Goldner Company*
Imperatrice Amarant & Bell*
Independence Blue Cross*
Jack Zigon Photography
K. Wagner Machines
Kendra Scott Jewelry
LEM Capital*
Main Line Fertility
Media Real Estate
National Board of Medical Examiners*
National Mail Graphics
NJM Insurance Group*
Patriot Financial Partners*
PFM Asset Management*
Pinocchio's Pizza*
PNC Capital Advisors
Precision Radiation Oncology*
Premier Medical Management
Prospect CCMC
Radnor Financial Advisors*
Reliable Computer Solutions & More*
Rothschild & Co. Asset Management*
Schultz & Williams
Southeast Medical Imaging*
Springfield Country Club*
State Farm – Ed Hanway*
Stillwater Capital Advisors*
Stoneridge Investments*
Suburban Fence Company*
Surgical Care Associates*
Task Metal Products
The Drexel Agency*
The Employees Community Fund of Boeing (ECF)*
The Haverford Trust Company*
The Interpublic Group of Companies
The Law Office of Kenneth R. Schuster
The Vein Center at Brinton Lake
Torrillo & Associates*
United Way of Greater Atlanta
United Way of Greater Philadelphia and Southern New Jersey*
Vanguard Matching Gift Program*
Walmart
Walsh & Nicholson Financial Group
Withum Smith & Brown*

Individuals

Drs. Michael Adesman and Susan Weil*
Carolina Alshon*
Linda Anderson, Esq.
Carole Andracchio*
Dr. and Mrs. Stephen Arrigo*

W. Gordon** and Rita Atherholt*
Robert and Michele Barbacane
Thomas and Elizabeth Belmont*
Dr. L. Joy Gates Black and Dillet Black*
Dr. Richard Blonski
Corliss and Clayton Boggs*
Bonnie Breit and Deb Soutar*
Gregory Brown and Linton Stables*
Phil Brown*
Gretchen and Scott Bruce*
Judy** and Robert Bruce*
Lisa Roberts Cadorette*
Richard Caputo
The Estate of Sandra Dunn Cherry*
Rita and William Clark*
Marie and George Coan*
Gerry and Ruth Cohen*
Barbara Craig and Matthew Kremer*
Joanne Craig*
Michele and Frank Daly, Esq.
Philip Damiani
Nicholas and Eileen DeBenedictis*
Cordelia and Don Delson*
Paul DiLorenzo*
Carmela Dindor*
Ceil and Eric Dobkin, M.D.
Carol and Daniel DuPont, D.O.*
Gloria and Steven Ellers*
Marie Feindt, Esq.
Robert Fenza
Tammy Finsterbusch
Merle and Steven Fischer, M.D.
Nancy and Bruce Fischer*
Jo Ann Flounders
Lisa Gaffney*
Steve and Sue Gerber
Joan Giordano
Louella Goldstein
Vincent and Demaris Gordon*
Ellen and Robert Grill*
Colleen Guiney and Gerard Murray
Dan and Cathy Hagan*
Trisha Hall, Esq.
Lydia Hammer and Martin Josephs
Ellen and Ed Hanway*
George and Loretta Hassel*
Drs. Rima and Andrew Himelstein*
Michael Irwin*
Richard Jacob*
Tyrone Jamison*
Steve Jefferis
Rabbi Louis Kaplan*
Dr. Richard and Bonnie Kaplan*
Drs. Lauren and Steven Katz*
Dr. Frederic and Wendy Kauffman
Neil Kauffman and Barbara Drebing*
Joanne and Joel Krackow, M.D.*

Dr. Joyann Kroser*
William and Catherine Lamon
Helena Landis
Joseph and Frances Lastowka
Kathleen Lehman*
Mary Lou and Theodore Lewandowski*
David Paley Lichtenstein and Rebecca Silver
Kate Lichtenstein
Robert and Sandra Lichtenstein
James and Maria Lynch
George Maalouf*
Donna and Vincent Mancini, Esq.
Dr. William and Pamela Manella*
Lori Markusfeld and Jeffrey Cole*
Michael and Kristy Mattise*
Brenda McPherson*
Gerald Miller and Lois Frischling*
Kathleen and Gerald Montella*
Theresa Murdock*
Dan Muroff, Esq.
Cheryl and Nathaniel Nichols, Esq.*
Pete and Ellen Oettinger*
Joseph Pappano, M.D.
Susan Parker*
Eileen and Domenic Pascale*
Dr. Homayoon Pasdar and Cheryl Riley Pasdar
Ted and Anne** Peters
Helen Davis Picher and Oliver Picher*
The Hon. Dominic and Diana Pileggi*
David Pines*
Amy and David Pollack*
Drs. Krishnamurti and Vatsala Ramprasad
Linda Ramsey, Esq.*
Mark Rebold*
Deeneen Redd
Joan K. Richards*
Francis Rigney*
Jordan Rodriguez*
Justin Roe, M.D., and Jacquelyn Roe, Esq.
Dr. Linda Rothweiler
Cynthia Sacharok, M.D., and Jeffrey Costa*
Dr. Mark and Ellen Saks
John Satterfield
James and Gena Scanlan
Mary Ellen and Robert Scott*
Melissa Sellers*
Frances M. Sheehan and Ricardo Gelman, M.D.*
Thomas and Joanie Shoemaker*
Dr. Joseph and Christine Sincavage
Drs. Rhoda and Richard Soricelli
Reb and Ginna Speare*
Dr. Harvey and Naomi Spector
Andrew and Penni Starer
Frances Stier*
William and Elizabeth Streit
Alice W. Strine, Esq., and Walter Strine, Esq.
Ann Swan*
Andrew Szabo
Constance and Andrew Tighe*
Ann Torregrossa
David and Joanne Torrillo*
Frances Vilella-Velez*

Raymond J. Vivacqua, M.D.*
Mischico Warren
William Weaver
Arthur Weisfeld and Virginia Brabender*
Suzanne and Robert Welsh*
Gail M. Whitaker, Esq.*
Dr. Christopher Williams
Dr. Russ and Judy Young
Kate and Brian Zidek

Government Grants

Pennsylvania Department of Health:
Bureau of Family Health
Bureau of WIC
Pennsylvania Department of Human Services:
Office of Child Development and Early Learning (OCDEL)
Maternal, Infant and Early Childhood Home Visiting (MIECHV)
U. S. Department of Health and Human Services:
Health Resources and Services Administration (HRSA)
Substance Abuse and Mental Health Services Administration (SAMHSA)



Foundation youth prevention programs are made possible with grants from Access Matters and Substance Abuse and Mental Health Services Administration (SAMHSA) of the U.S. Department of Health and Human Services. These grants enable our staff to inform and educate youth to prevent risky behaviors involving substance use and sexual activity, improving access to services and resources they need.

We are grateful for the generous gifts in memory of:

Hearn Bailey
David Baker
Martha Rae Bollinger
Joseph Brennan
William Brockus
Dennis Bromley
Jack Brown
Marie Brown
Paulette Canuso
Anne Carroll
Jean Christopher
Theresa Cimino
Janet Cleary
Mary Connell

Marjorie Cousins
William Cousins
Howard Crawford
Shirley Crawford
Walter Day
Rita Delguidice
Daniel DiPrinzo
Donald Dodds
Gail Dougherty
Alfred Durso
William Edenfield
William Erb
Mary Ann Falcone
Patrick Flounders
Dorsey Fooks
George Frazier
Geraldine Frost
John Fullam
Rita Haley
Charles Hall
Clara Hamilton
Robert Harrison
Deborah Hastings
John Healy
David Holland
Anne Johnson
Jean Joyce
Sarah Katuran
Claire Keating
Mary Kobb
John Koelle
Dorothy Loving
Richard Loynds
Arthur Luciane
Martin Lyons
Denise Maffei
John Mast
Anna Mastella
Teresa Mattero
Dorothy McCarthy
Teresa McFadden
Madeline McNeill
Jean Meibohm
Patricia Methlie
Susan Michetti
Barbara Miller
Darius Minter
Delbert Minter
Jeff Monahan
Michael Notarfrancesco
Edward O'Neill
Jack Ostrander
William Palmer
Jerry Parker
Ronald Parker
Molly Perkis
Angelos Pipino
Harry Price
John Reenie
Peter Russial
Michael Russo
Florence Rydzewski
Susan Schembs
Leonard Schlack
Jane Scullin
Constance Shanahan
Ann Marie Simms
Silva Small
Glenn Sowell

Reba Speare
Jane Spence
Bill Stern
Nancy Stern
Elizabeth Subers
William Subers
Jane Swain
Sandra Tedens
Catherine Vernon
Richard von Steuben
James Walls
Sidney Walton
Mary Warhola
Lois Watts
Lois Williams
Michael Wing
Debby Yoder
Patrick Yonkers

We are grateful for the generous gifts in honor of:

Carolina Alshon
Robert J. Bruce
Joanne Craig
Anne Donnelly, M.D.
Darcy Hayes, M.D.
Dorian Jacobs, M.D.
Betty Speare Loughhead
Frances M. Sheehan

Funds and Scholarships

Albright Family Charity Fund*
Alice and Walter Strine Fund
Betty Speare Loughhead Fund
Boggs Family Fund
Burn Care Funds
Cancer Care Funds
Children's Asthma Fund
Cribs for Kids Fund
Crozer-Chester Hospitals Medical Staff Fund*
David Peifer Fund
Debby Yoder Advised Fund
Delaware County Memorial Hospital Medical Staff Fund*
Emergency Medicine - Toxicology Fund
Erb Trust
Estate of Frances Dunn Cherry*
Eva Miller Nursing Scholarship Fund*
Family Medicine Residency Support Fund
Girls Night Out - Women Helping Women with Cancer Fund*
Hospice and Home Care Funds
Kevin Tighe Memorial Scholarship Fund
Patrick and Jean Gavin Fund for Youth Development
Philadelphia Cyberknife Medical & Scientific Fund
President's Fund
Susan Reiley Memorial Fund
Thomas Wolfarth EMS Training Fund

*Founding Donor
**Deceased

We apologize for any inaccuracies and welcome your corrections.

FY19 Board of Directors

Robert N. Speare, Esq., Chair
The Hon. Dominic F. Pileggi, Vice Chair
Corliss Boggs, Secretary
H. Edward Hanway, Treasurer
Michael B. Adesman, M.D.
L. Joy Gates Black, Ph.D.
Robert J. Bruce
Donald W. Delson, Esq.
Cyrise L. Dixon
Daniel C. DuPont, D.O.
Michael B. Magnavita, CPA
Nathaniel C. Nichols, Esq.
Ted Peters
Joan K. Richards
Thomas A. Shoemaker
Alice W. Strine, Esq.
Kate Zidek

Senior Staff

Frances M. Sheehan, President
Joanne D. Craig, Vice President for Programs
Laura DeFlavia, Chief Financial Officer
Ellen Y. Grill, Vice President for Advancement and Communications

Advancement Committee

Corliss Boggs, Chair
Michael B. Adesman, M.D.
Bob Dumont
Michael B. Magnavita, CPA
Alice W. Strine, Esq.

Finance Committee

H. Edward Hanway, Chair
Scott Bruce
Donald W. Delson, Esq.
Michael Mattise
Joan Dawson McConnon
Ted Peters
Joan K. Richards
Thomas A. Shoemaker
Suzanne Welsh
Kate Zidek

Governance Committee

Daniel DuPont, D.O., Chair
L. Joy Gates Black, Ph.D.
Corliss Boggs
Robert J. Bruce
Nathaniel C. Nichols, Esq.
The Hon. Dominic F. Pileggi

Investment Committee

Ted Peters, Chair
Scott Bruce
H. Edward Hanway
Michael Mattise
Joan K. Richards
Suzanne Welsh
Kate Zidek

Planning Committee

Thomas A. Shoemaker, Chair
L. Joy Gates Black, Ph.D.
Robert J. Bruce
Donald W. Delson, Esq.
Lydia Hammer
H. Edward Hanway
The Hon. Dominic F. Pileggi

Program Committee

Robert J. Bruce and
The Hon. Dominic F. Pileggi, Co-chairs
Nicholas Aponte
Corliss Boggs
Michele Daly
Cyrise L. Dixon
Vince Gordon
Lydia Hammer
Nathaniel C. Nichols, Esq.
Helen Davis Picher
David Pollack
Joan K. Richards
Alice W. Strine, Esq.

Golf Outing Committee

Robert N. Speare, Esq., and
H. Edward Hanway, Co-chairs
Rob Barbacane
Corliss Boggs
Andrew Brenner
Brian Crimmins
Dan Hagan
Rocco Imperatrice, Esq.
Andrew McMenamin
Colleen Morrone
Frances M. Sheehan
Thomas A. Shoemaker
John Spagnola
Rob Stiles

Girls' Night Out

Marie DeStefano and
Anne Steenberg, Co-chairs

SECOND ANNUAL GOLF OUTING



Robert Stiles and his winning foursome from Haverford Trust on May 19, 2019.

Creating Your Legacy

Our donors enjoy:

ACCESS

to our broad knowledge of Delaware County's nonprofit organizations and the needs of our county

PARTICIPATION

in the grant-making process for donor-advised funds they establish

FOUNDATION MANAGEMENT

of funds and oversight of all investments, maintaining appropriate tax records and conducting due diligence processes in a timely and effective way

Choose the right fund for you

You choose which fund will best match your charitable goals and tell us how long you want your fund to last over a fixed period of years or forever.

1. UNRESTRICTED FUNDS

We use your funds, at our discretion, to award gifts to organizations we believe are working to improve the community.

2. DONOR-ADVISED FUNDS

Donor-Advised Funds are the most flexible vehicle for your philanthropic goals. The foundation will partner with you to focus on the causes and projects you care about. You can make recommendations about grants to any qualified nonprofits in Delaware County or throughout the United States.

3. SCHOLARSHIP FUNDS

You can express the educational values you believe in through scholarships to deserving students who meet your criteria.

4. FIELD OF INTEREST FUNDS

We can use these funds to award grants to nonprofits that are making a difference in causes dear to you.

5. DESIGNATED FUNDS

You may designate one or more specific organizations to receive your endowed funds. This type of fund is a good way to make annual or ongoing gifts to the nonprofit of your choice.

6. ORGANIZATIONAL ENDOWMENT FUNDS

Nonprofits may choose to house their endowments at the foundation. These professionally administered funds provide organizations with a permanent source of income. Other donors also can contribute to the fund through living or planned gifts.





Opportunities for You to Partner With Us

1. Stay informed and use your voice.
2. Subscribe to our e-newsletter. Sign up at delcofoundation.org or email us at info@delcofoundation.org.
3. Follow us on Facebook, Instagram, Twitter and LinkedIn @delcofdn.
4. Support the foundation and the nonprofits we serve by donating online at delcofoundation.org.
5. Make an impact by investing in Delaware County with your charitable giving. Establish a charitable fund, such as a donor-advised, field of interest, designated or endowment fund with a tax-deductible donation of cash, stock, or other instrument and give to the nonprofits you care about at your own pace. We manage the rest. Contact Ellen Grill at 610-744-1015.
6. Invite us to speak to your organization or community group by contacting Katy Lichtenstein at 610-744-1017.



www.delcofoundation.org

200 E. State St., Suite 304, Media, PA 19063



THE
FOUNDATION FOR
DELAWARE
COUNTY

- Cultivating Philanthropy
- Transforming Community

Credits: Photography: Zave Smith. Design: Twistnshout. Upper Darby mural designed by Christina Roberts.