



WE ARE ON A MISSION
to build a vibrant
future for everyone



THE
FOUNDATION FOR
DELAWARE
COUNTY

Community Report
Fiscal Year 2020

The Foundation for Delaware County is

ON A MISSION

... to invest in the county
through grantmaking

... to inspire and
facilitate philanthropy

... to advance
public health

... to serve as a
convener and catalyst

... to ensure your
legacy lives forever

... to expand channels of
community engagement

... and so much more

The Foundation for Delaware County invites you to share our commitment to building a vibrant future for everyone by making us your philanthropic home. Our donors support nonprofit organizations in Delaware County, across Pennsylvania and beyond. They are families and individuals, faith communities and corporations, and groups large and small. While interests, passions and investments differ, our donors are all rooted in the core value of generosity.

In fiscal year 2020, The Foundation for Delaware County awarded a total of \$1,980,257 in grants, scholarships and charitable support thanks to the many generous contributions we received from residents and businesses. We are grateful to all our donors and look forward to continuing our partnership.

**We are here to help you make an impact now and forever.
We hope that you will join us in our mission.
Together, we are a greater force for good.**



Dear Delaware County Supporter and Partner,

It is with optimism and gratitude that we share the work of The Foundation for Delaware County during this year of unprecedented challenges. The foundation is on a mission to meet these challenges head on, building a philanthropic engine powered by you and generous individuals of every giving level. Thank you for inspiring us each day, caring for others so generously at a time when it truly makes a difference.

We began the fiscal year by creating a strategic plan that set ambitious goals and clear direction. We:

- Launched the Center for Nonprofit Excellence to help strengthen our nonprofit sector,
- Created the Housing Stability Program with the generous support of five area companies to address the need for safe and healthy housing for our Healthy Start and Nurse-Family Partnership clients,
- Partnered with the United Way and others to establish, fundraise for, and administer the Delaware County Complete Count Fund for the 2020 census, and
- Worked closely with our county government to establish a county public health department.

And then mid-March arrived with a global pandemic. They say that fortune favors the prepared, and certainly the groundwork we'd laid during our first four years helped us respond immediately. We knew that many Delaware County residents would face tremendous needs as a result of this virus and that our county's nonprofits would be called on to respond in ways they'd never had to before. Knowing that many nonprofits were already operating with thin financial margins, we launched the Delaware County COVID-19 Response Fund the very day our operations went virtual on March 13.

As this report goes to press, we have raised more than \$700,000 for the Response Fund and deployed over \$600,000 in grants. Your generosity has made it possible for the many deserving nonprofits listed on page five to respond to the immediate needs of our vulnerable neighbors during the pandemic.

The pandemic isn't the only virus we must confront. If we are truly to be a community foundation serving our entire county, we need to address the virus of racism. Our strategic plan states clearly that we will "engage fearlessly in open discussions about social and racial inequities that prevent Delaware County from building a brighter future for all." Our board and staff are committed to serving as leaders and taking action in this effort where we can play a uniquely helpful role.

While it's easy to feel discouraged at this moment, we encourage you to take a careful look around. We promise that you'll find inspiration right in your own backyard and in the work we are doing at the foundation.

Help us spread the word. When you encounter others who care about Delaware County, tell them about this community foundation and how we can help them realize their charitable goals. We're on a mission to help them, to help you and to move Delaware County forward.

Dominic F. Pileggi
Chair, Board of Directors
July 2020–Present

Robert N. Speare
Chair, Board of Directors
July 2018–June 2020

Frances M. Sheehan
President

Nonprofits Face Unprecedented Challenges

Total Number of COVID-19 Response Fund Grants: 59*

Total Amount Granted: \$472,034*



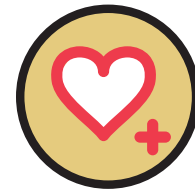
Food and Essential Supplies
54%



Personal Protective Equipment and Cleaning Supplies
16%



Legal and Financial Counseling
10%



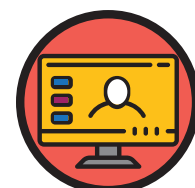
Behavioral Health
7%



Supportive Services
6%



COVID-19 Testing
4%



Technology
3%

*As of June 30, 2020

At the onset of the pandemic, we knew immediately that there would be serious challenges for our Delaware County residents, particularly for senior citizens, Indigenous and people of color, and low-income individuals.

By June, we saw the unemployment rate skyrocket to 14%, up from 4% in February.

Nonprofit organizations serving Delaware County residents stepped up to respond in ways they'd never had to before — and many that did were already under-resourced and stretched by very thin financial margins. The Delaware County COVID-19 Response Fund Advisory Committee deployed grants as

quickly as possible to support these nonprofits. Through 13 rounds of funding, the foundation distributed a total of \$472,034 to 58 front-line nonprofit organizations (as of June 30, 2020).

These grants helped provide food-insecure families with food boxes and gift cards as well as diapers and essential supplies such as cleaning and basic hygiene products. Funding allowed nonprofits to purchase personal protective equipment (PPE) for their front-line workers so they could reopen safely. The Response Fund awarded grants to support testing, to distribute important public health information, to acquire the technology needed to service clients virtually, and to conduct healthcare worker support groups.



Photo: The Philadelphia Inquirer

We are most grateful for the generosity of many donors who dug deep to support our essential nonprofits. Your contributions and encouragement allowed us to provide these grants. Thank you.

The Delaware County COVID-19 Response Fund in Action

Making Sure No One Goes Hungry

Ruth Bennett Community Farm is dedicated to providing access to nutrient-dense foods at affordable prices with the goal of reducing food insecurity in its immediate Chester Housing Authority community and the surrounding neighborhoods. During the summer, six high school students work at the farm. In addition to learning about growing organic produce, the students gain job development skills and entrepreneurial training.

On Thursdays during the summer, the farm hosts a farmers market that sells greens, eggs, fruits and vegetables, flowers and more for neighbors and the public. Because of the pandemic, the farmers market did not open in summer 2020. Thanks to a \$30,800 Response Fund grant, Ruth Bennett Farm provided free biweekly boxes of food to residents of the Chester Housing Authority from March through October.



“The food box distribution is critical for people having a hard time accessing food during the pandemic. We wanted to make sure people are able to get fresh produce in their diets during a stressful time,” said Natania Schaumburg, farm manager. “Recipients have told us they wouldn’t be eating fresh produce during this time if it weren’t for our boxes. They have enjoyed trying seasonal produce and cooking recipes from scratch.”

Photo: Saundj Wilson

Supporting Testing and Important Public Health Information

The Urban League of Philadelphia received a \$20,000 grant to partner with the Black Doctors COVID-19 Consortium to provide two testing events in Black neighborhoods in Delaware County, distribute emergency personal protective equipment kits to the community, and provide important fact-based public health information, such as how to prevent the spread of COVID-19. The Foundation for Delaware County was aware of how the COVID-19 pandemic was disproportionately impacting the Black community. Testing, care and fact-based resources provided by two Black-led organizations served as a critically important component in closing gaps in access to testing and accurate information.

COVID-19 Response Fund Grant Recipients*

BEHAVIORAL HEALTH \$30,800

- Philadelphia Medical Society

COVID-19 TESTING \$20,000

- The Urban League of Philadelphia

FOOD AND ESSENTIAL SUPPLIES \$257,360

- Andrew L. Hicks Jr. Foundation
- Anna's Place
- Boys and Girls Club of Chester
- Breathing Room Foundation
- Bringing Hope Home
- Bywood Community Association
- CASA Youth Advocates
- Center for the Blind and Visually Impaired
- Centro de Apoyo Comunitario
- Chester Arts and Cultural Center Corporation
- Chester Eastside
- Cityteam
- Community Options, Inc.
- Drexel Neumann Academy
- Family and Community Service of Delaware County
- Grace Court, Inc., a community of HumanGood East
- Irish Immigration Center
- Jewish Relief Agency
- Keystone Human Services
- Kisses for Kyle Foundation
- Making a Change Group
- Metropolitan Area Neighborhood Nutrition Alliance (MANNA)
- Mitzvah Circle
- Multicultural Community Family Services
- Neighbor to Neighbor Community Development Corporation
- Nutritional Development Services
- The Peggie & Paul Shevlin Family Foundation
- Philabundance
- Ridley School District
- Salvation Army
- Saint Katherine Drexel Food Pantry
- Senior Community Services

- Valley Youth House
- Wayne Senior Center
- Women's Resource Center of the Delaware Valley

LEGAL AND FINANCIAL COUNSELING \$45,000

- Chester Community Improvement Project
- Clarifi
- Media Fellowship House
- Nationalities Service Center
- SeniorLAW Center
- Service Corps of Retired Executives Association (SCORE)

PERSONAL PROTECTIVE EQUIPMENT (PPE) / CLEANING SUPPLIES \$76,234

- Boys and Girls Club of Chester
- Child Guidance Resource Centers
- The Communities of Don Guanella and Divine Providence
- Community YMCA of Eastern Delaware County
- Elwyn
- Individuals Aiding in Emergency Foundation
- Mental Health Partnerships
- The Nile Swim Club of Yeadon

SUPPORTIVE SERVICES \$30,000

- ALS Association Greater Philadelphia Chapter
- Community Action Agency of Delaware County, Inc.
- Domestic Abuse Project of Delaware County
- Philadelphia Freedom Valley YMCA

TECHNOLOGY \$12,640

- Chester Community Coalition
- Family Support Line of Delaware County, Inc.
- Peaceful Living

*As of June 30, 2020



Photo: Pam West

Helping Nonprofits Reopen Safely

The Nile Swim Club of Yeadon

As the summer began and more businesses in Delaware County were able to reopen, many Delaware County nonprofits struggled to open their doors. They faced increased costs for personal protective equipment, cleaning products and supplies while they projected a major decrease in revenue. At the Nile Swim Club in Yeadon, the board agreed to open with strict social distancing limitations, hoping they would draw at least enough members to cover staff salaries.

A \$7,000 grant from the Response Fund helped to pay for touchless paper-towel dispensers in bathrooms, hand sanitizer, masks, signs and other social distancing equipment deemed essential to safety. This allowed the nation's first Black-owned swim club to provide in-person summer camps at the pool — a much-needed respite for children.



Investing in Delaware County Through Grantmaking

The foundation invests in Delaware County by supporting nonprofits with missions that align with our own, making grants where we see the greatest unmet need and can have the greatest measurable impact.

Our fiscal year 2020 Impact Grants targeted the root factors influencing health and well-being — treating causes, not just symptoms. These factors include economic stability, education, healthcare and the built environment. By targeting root factors influencing health, we can not only improve individual and population health but also advance health equity.

In total, the foundation distributed \$1,157,779 to 50 organizations through our second competitive Impact Grant cycle. An additional \$822,478 were awarded through other grants (including grants for the census and from the Response Fund), scholarships, and charitable care support from other restricted funds at the foundation.

2020 IMPACT GRANTS

HEALTH AND HEALTHCARE

Behavioral Health

- **Child Guidance Resource Centers**
\$30,628 for the professional development of behavioral health clinicians serving children and teens throughout Delaware County.
- **Family and Community Service of Delaware County**
\$30,628 to increase the capacity of, access to, and sustainability of behavioral health services for vulnerable clients in Delaware County.
- **Transformation Yoga Project**
\$12,000 to support behavioral health services for youth in the Lima Detention Center.

Services for Cancer Survivors

- **Bringing Hope Home**
\$10,000 to improve the well-being of those impacted by cancer in Delaware County.
- **Philadelphia Freedom Valley YMCA**
\$25,000 to support the LiveStrong cancer survivor program at the YMCA Rocky Run site in Media, PA.

ON A MISSION to Support Behavioral Health Services

Family and Community Services of Delaware County (FCSDC) offers behavioral health services that help to alleviate day-to-day living concerns, repair and enhance relationships, improve functioning at work, increase financial stability, reduce social isolation, and increase overall quality of life and life satisfaction.

FCSDC is one of the only community-based outpatient behavioral health facilities in Delaware County that accepts Medicaid, which increases access to therapy and psychiatric support for many Delaware County residents. As one client commented, *“I am so grateful. Before coming to FCSDC, I was not able to see a psychiatrist.”*

Children's Health and Nutrition

- **Boys and Girls Club of Chester**
\$10,000 to support the Healthy Choice-Healthy You program (HC-HY) promoting healthy nutrition and exercise as alternatives to drugs.
- **Chester Upland Youth Soccer**
\$15,000 to develop healthy activity habits for over 450+ students living in the Chester-Upland School District.
- **Girls on the Run**
\$5,000 to support the emotional and physical health of girls ages 8-14 in Delaware County.
- **Kids Smiles**
\$25,000 to provide outreach to over 5,000 Delaware County children in need of dental care.
- **Pennsylvania Health Access Network**
\$10,000 to advocate for and improve the Medical Assistance Transportation Program (MATP) for children and parents on Medicaid.

Children's Health and Nutrition, continued

- **Pennsylvania Health Law Project**
\$30,000 to increase access to medically necessary healthcare for children in Delaware County.
- **Pennsylvania Partnerships for Children**
\$25,000 to advocate for increased state funding for evidence-based home visiting and Women, Infants, and Children (WIC) nutrition services that improve children's health and development from pregnancy through the early years.
- **Public Citizens for Children and Youth**
\$42,523 to advocate for lead screening and oral care for low-income children in Delaware County.
Partial funding provided by the foundation's Toxicology Fund established by Dr. Dorian Jacobs.

EDUCATION

Vocational and Job Training

- **Career Wardrobe**
\$15,000 to provide free professional attire for residents to obtain and maintain employment.
- **CCSA Foundation (Chester Charter Scholars Academy)**
\$25,000 to offer intensive early literacy intervention and to provide educational experiences to ensure success beyond high school for Chester students.
- **Chester Education Foundation**
\$50,000 to support The Marie and Cynthia Jetter Center for College Access and Career Services for students in the Chester Upland School District.
- **College Possible Philadelphia**
\$35,000 for college access services for high school juniors and seniors in the Penn Wood and Upper Darby School Districts.
- **Delaware County Literacy Council**
\$25,000 for integrated education and training for immigrants in Delaware County.



Photo: Robb Lim for RL STUDIOS

ON A MISSION to Help Students Thrive

Education is not just about what is learned in the classroom, it is also about the doors it unlocks to future well-being. Research has shown that a lack of education has a direct correlation with lack of employment, which can lead to long-term economic hardship, social isolation, and poor health.

College Possible and the Chester Education Foundation, two organizations that are preparing young students for the future, were both awarded 2020 Impact Grants to fund college access and career services for students.

College Possible received a \$35,000 Impact Grant that will provide students in the Penn Wood and Upper Darby School Districts with personalized coaching and support to find their best-fit colleges and ways to pay for those colleges. Students will be given an opportunity to participate in after-school sessions that include SAT preparation, financial aid consulting, college transition guidance, and financial literacy training. In addition, students commit to attending college campus visits to help them envision themselves on campus and begin the college search process.


Chester Education Foundation (CEF) will use their \$50,000 Impact Grant to support The Marie and Cynthia Jetter Center for College Access and Career Services for students in the Chester Upland School District. CEF works with students to increase their academic achievement, on-time graduation rates and post-secondary enrollment rates. CEF has begun to recruit student cohorts in middle school to build relationships and create opportunities so that the students are fully engaged by junior and senior year of high school.



Photo: Perry Melat for RL STUDIOS

EDUCATION, continued

Early Childhood Education

- **Community YMCA of Eastern Delaware County**
\$25,000 to support early childhood education.
 - **Easter Seals of Southeastern Pennsylvania**
\$20,000 to support early childhood education and therapeutic services for children and families with disabilities or who are at risk for developmental delays.
 - **Elwyn**
\$20,000 to build the capacity of early childhood programs, including support to improve the kindergarten-readiness skills of students aged three to five in Chester.
 - **Episcopal Community Services**
\$15,000 to provide high-quality early childhood education in after school programming at Park Lane Elementary School in Darby.
 - **First Up**
\$15,000 to support the early childhood education apprenticeship program to train childcare workers in Delaware County.
- 
- **J. Lewis Crozer Library**
\$20,000 to improve reading levels and provide direct support for early childhood learners in Chester.
 - **Neighbor to Neighbor Community Development Corporation**
\$10,000 to expand their focus on education, literacy and early childhood development in Delaware County.
 - **Upper Darby Community Outreach Corporation**
\$25,000 to strengthen early childhood development and English as a second language for adult immigrants.



ON A MISSION to Ensure No Child Is Left Behind

Early childhood development and education are key determinants of future health and well-being. Addressing the disparities in access to early childhood development and education opportunities can greatly bolster young children’s future health outcomes. Nonprofit early learning centers across the county support our workforce and economy while providing crucial early learning experiences to young children. These early learning centers are a critical outlet for fostering the mental and physical development of young children.

The foundation distributed \$150,000 through Impact Grants to eight nonprofits providing early childhood education in Delaware County. One of the grantees is **First Up**, an organization that offers a registered apprenticeship program for early childhood education teachers who are also enrolled in an associate’s degree program at an accredited institution. This program supports more than 40 apprentices in Delaware County through a cohort model that helps each apprentice balance the demands of full-time work with their studies, while providing them job training and support. First Up works closely with Delaware County Community College to ensure that on-the-job training complements the classroom-based learning portion of the associate’s degree coursework.

“Now more than ever, we understand that even our youngest children need high-quality learning,” reports First Up Executive Director Carol Austin. “The first five years are critical to development. First Up helps to ensure teachers are qualified and equipped with all the resources they need to support children, and children have teachers that are prepared to support them. It is a win for teachers and children.”

SERVICES TO VULNERABLE SENIORS

- **Community Volunteers in Medicine**
\$20,000 to provide dental services at Surrey for Delaware County seniors.
- **Multicultural Community Family Services**
\$18,000 to support the Community Health Connectors program serving low-income and disengaged immigrant seniors in Delaware County with a multi-level and cross-sector approach.

The following grants were made possible thanks to a \$116,000 grant from the Delaware County Home Care Association Fund of the Philadelphia Foundation

- **Main Line Health HomeCare & Hospice Foundation**
\$20,000 to support and improve access to hospice and homecare services in Delaware County.
- **Mercy Home Health**
\$30,000 to support and improve access to hospice and homecare services in Delaware County.

- **Senior Community Services**
\$40,000 to provide home-delivered meals, helping to address food insecurity among elderly people in Delaware County.
- **Surrey**
\$30,000 to support health and wellness activities at their senior centers in Broomall, Havertown and Media.
- **Wayne Senior Center**
\$10,000 to ensure that vulnerable seniors have access to the information and resources necessary to maintain their health and independence.

ON A MISSION to Support Access to Healthcare for Immigrant Seniors



Photo: Saundi Wilson

Many immigrant seniors face greater health risks because they do not have adequate access to available preventive health and wellness services that could give them a better chance of living longer and enjoying a healthier life.

Multicultural Community Family Services (MCFS) received an \$18,000 Impact Grant in support of the new Community Health Connectors Program — a comprehensive initiative that addresses inequalities and access to

community healthcare services for immigrant seniors.

As part of this program, community health workers provide preventive health outreach, education, care coordination and other support services (including food, housing and financial services) directly to low-income immigrant seniors. With this funding, MCFS will also facilitate community-based conversations and collaborative partnerships to develop creative and effective pathways for culturally

and linguistically diverse people to receive equitable access to preventive healthcare services.

MCFS will better support seniors while continuing to remove barriers to accessing the community services they so desperately need, including preventive health, literacy, English as a second language, public transportation and housing services. The grant was awarded to MCFS at a critical time for immigrant seniors whose need for services increased significantly this year.



ECONOMIC STABILITY

- **CityTeam**
\$15,000 to provide food stability and housing security for families and individuals across Delaware County.
- **Delaware County Community College Educational Foundation**
\$20,000 to address food insecurity and provide access to social services for vulnerable students.
- **Lansdowne Economic Development Corp. (LEDC)**
\$35,000 to enhance workforce development through entrepreneurial innovation.

NEIGHBORHOOD AND BUILT ENVIRONMENT

- **Chester Arts and Culture Center Corporation**
\$20,000 for low-income children and their families to learn to grow and cook with nutrient rich produce at Ruth Bennett Community Farm.
- **Riverfront Alliance of Delaware County**
\$20,000 to stabilize the housing stock in the city of Chester by assisting low-income homeowners with health and safety improvements.
- **Thresholds in Delaware County**
\$5,000 to prevent violence and enhance problem-solving by providing education on decision-making for incarcerated citizens.



PREVENTIVE CARE

- **ChesPenn Health Services**
\$60,000 to support the Federally Qualified Health Center's Complex Care Program, which works to prevent health deterioration and multiple in-patient or emergency room visits.
- **Planned Parenthood Southeastern Pennsylvania**
\$24,000 to provide high-quality reproductive health services to low-income residents in Delaware County.
- **Domestic Abuse Project of Delaware County, Inc.**
\$30,000 to support an IT capacity-building project in order to serve additional domestic violence victims.
- **The School of Parent Education**
\$10,000 to provide outreach and education to fathers, encouraging the entire family's involvement in healthy maternity and prenatal/postnatal outcomes.

SECOND-YEAR PAYMENTS TO MULTI-YEAR GRANT RECIPIENTS

- **Be Proud Foundation**
\$60,000 over three years to fund the development and marketing of a teen-developed smartphone app that educates middle and high school students about substance use and provides emergency contact information in case of an overdose or other unsafe conditions.
- **CASA Youth Advocates, Inc.**
\$100,000 over two years to launch Delaware County's Voices for Children, a coalition of human service, government, philanthropic and individual advocates building a comprehensive safety net of services to ensure children's healthy and safe development.
- **Chester Community Coalition**
\$47,500 over three years to support a collaborative effort (with Child Guidance Resource Centers and others) to break the cycle of violence in Chester by providing intensive counseling to children who have lost a family member to gun violence.
- **Chester Eastside, Inc.**
\$10,000 over two years to support FoodMatters! KIDS, a healthy meal and nutrition education program.
- **Family Support Line of Delaware County, Inc.**
\$45,000 in general operating support over three years for advocacy and counseling for children who are victims of sexual abuse.
- **Pettaway Pursuit Foundation (PPF)**
\$50,000 over two years for community-based programming in breastfeeding support, childbirth and newborn care education, life skills and more.

COMMUNITY-BASED GRANTS

- **The Community's Foundation (TCF)**
\$50,000 to provide Community-Based Grants under \$5,000 to nonprofits serving Delaware County.

**FY20
Grand Total Grants,
Scholarships and
Charitable Care:**

\$1,980,257

For more details about these grants, visit us online: delcofoundation.org.

If you would like to start a fund to support an important cause close to your heart, please contact Ellen Grill at egrill@delcofoundation.org or 610-744-1015.



ON A MISSION to Energize Participation in the 2020 Census

During fiscal year 2020, The Foundation for Delaware County partnered with Philanthropy Network Greater Philadelphia, the United Way of Greater Philadelphia and Southern New Jersey, and the Delaware County Complete Count Committee to form the Delco Counts 2020 Census Action Fund. This partnership was created to support Delaware County organizations in promoting a complete and accurate count of all residents in the 2020 census — a number that’s critical for informing the distribution of millions of dollars in federal funds to Delaware County each year for various programs, including healthcare, education, transportation and more. The Census Action Fund distributed \$100,000 in grants to nonprofit organizations working in under-counted communities and neighborhoods to help ensure an accurate count.

GRANTS AWARDED IN JANUARY 2020 \$30,300

- Chester Housing Initiative
- Delaware County Literacy Council
- The Library Foundation of Delaware County
- Multicultural Community Family Services
- The Urban League of Philadelphia
- Widener University

GRANTS AWARDED IN MARCH 2020 \$27,709

- Centro de Apoyo Comunitario
- Chester Community Improvement Project
- Lansdowne Economic Development Corp. (LEDC)
- The Library Foundation of Delaware County
- Movement of Immigrant Leaders in Pennsylvania (MILPA)
- NAACP Media Area Branch
- Philip Jaisohn Memorial Foundation
- WHY

Note: A third round of \$41,804 was awarded in August 2020.



Center for Nonprofit Excellence Launches

Your generous support makes our investment in the strength and impact of Delaware County’s nonprofits possible and will help us grow the Center in the future.

In 2019, the foundation commissioned a study of the training needs of our county’s nonprofit organizations. Participants expressed a desire for management training, business development and peer support. As a result, the foundation established the **Center for Nonprofit Excellence** to build strong and productive partnerships with Delaware County nonprofits and to address their capacity-building needs.

The foundation launched two peer-learning circles in April 2020, one for executive directors and one for emerging leaders. The circles provide nonprofit leaders in Delaware County with a space for reflective learning, problem-solv-

ing, peer connections and individual leadership growth with support from seasoned facilitators and speakers for one year. This has been a critical resource during the pandemic.

In addition, the foundation sponsored two consulting projects that provided each selected nonprofit with six months of strategic guidance from the organization Compass Pro Bono.

In 2020-21, the Center will offer a certificate program in nonprofit management with the Nonprofit Center at LaSalle University’s School of Business for Delaware County nonprofit leaders, as well as convenings for development professionals.

Centro de Apoyo Comunitario

The team at Centro de Apoyo Comunitario, an organization founded by local Latinx immigrants to serve the Upper Darby immigrant community, knew that ensuring a complete and accurate census count for Upper Darby’s immigrant population would be a challenge. And with the pandemic, their outreach had to shift.

With a \$4,400 grant from the foundation, the all-volunteer organization spent time identifying and educating community leaders in under-counted areas of Upper Darby to serve as census ambassadors. Each leader then identified an additional five to 10 families to call and educate on the importance of being counted in the census. The ambassadors helped families fill out the census form if literacy was a barrier. Through this grassroots effort, Centro de Apoyo reached more than 265 households.

The Library Foundation of Delaware County

Awarded two grants for census outreach, the Library Foundation provided yard signs, bookmarks, posters and information sheets to 28 libraries in Delaware County. A social media campaign helped to inform Delaware County residents that the census is safe, easy and important to complete and offered special “Delco Counts Day @ the Library” events in the hardest to count areas.

“It has been a real privilege to gather with such inspiring emerging leaders from across the nonprofit sector for our peer learning circle. Each participant brings a different perspective, a different skillset and a different job description to the group, while offering tremendous insight and perspective. The COVID-19 pandemic has put many of us in survival mode as each of us tries to keep our missions going, our virtual doors open, and our finances secure. Having this outlet to use as a brain trust and a support system has helped me stay hopeful, determined, and focused on the future. I am incredibly grateful for this opportunity.”

– Tiiu Lutter
Director of Development
Child Guidance Resource Centers

“I am grateful to The Foundation for Delaware County for acknowledging the crucial need of capacity-building support for executive directors in Delaware County. The Peer Learning circles have provided a safe space and a strong forum for leaders to share their successes and challenges as we lead our organizations during this challenging time. As a new executive director in Delaware County it has also expanded my network and helped me build relationships with other leaders across the county.”

– Julie Avalos
Executive Director
Domestic Abuse Project of Delaware County

WE'RE ON A MISSION... to Advance Public Health

The public health programs of The Foundation for Delaware County promote health equity every single day.

We collaborate to provide a continuum of care by delivering a variety of services, connecting families to resources, and ensuring they access and receive those resources. Our program staff provide services where there are no other options. They work hard to make sure clients and their families have everything they need to stay safe, to be healthy and to achieve self-sufficiency.

Serving nearly 10,000 clients throughout the year, these programs offer support to address much more than just physical health.

Through our public health programs, foundation staff ensure that clients and their families are physically and mentally healthy and that they have access to the services they need to be self-sufficient.

Our clients may face a variety of challenges, including mental health concerns and housing insecurity. This year, the coronavirus pandemic brought many new challenges and struggles.

Even prior to the pandemic, our staff saw a need in the community to not only treat perinatal depression,

but to try to prevent it. As a result, our federally-funded **Healthy Start** program now offers a new service for pregnant women to help prevent postpartum depression. Named **ROSE**, this evidence-based preventative program provides moms with resources to help manage their stress during and after pregnancy — facilitating successful pregnancies and entry into the next stage of their lives.

With doctor visits decreasing during the pandemic and families experiencing increased isolation, **Nurse-Family Partnership (NFP)** has been supporting moms who are pregnant, postpartum, or parenting infants and toddlers with increased telehealth visits from our nurse-home visitors to ensure that physical and mental health needs are

We have seen disproportionate suffering in the county, and we continue to do everything we can to provide resources for our clients in need.

being met. The NFP National Service Office has assisted local NFP programs by providing smartphones for clients so they can stay in touch with their case managers and nurse-home visitors and connect to community resources and medical providers.

The **Special Supplemental Nutrition Program for Women, Infants, and Children (WIC)** staff have been very active during the pandemic, ensuring that our 9,000+ clients receive nutrition counseling and breastfeeding support as well as access to other important WIC benefits. The WIC benefit card covers essential items for mothers and children up to age five, including fruits and vegetables, whole grains, peanut butter, cheese, yogurt, eggs, canned or dried beans, cereal, iron-fortified infant formula, infant foods, canned fish and, when medically necessary, special formulas.

While the foundation's program staff have encountered many challenges throughout the pandemic, including

technology issues and difficulties in providing outreach to clients, they have continued to strive to meet client needs, providing assistance and resources where they are lacking. Nurse-home visitors and case managers have provided education about the health implications of the pandemic, how to stay safe and when to contact medical providers.

Aided by the expertise of our Medical Legal Partnership lawyers, staff have shared important information and referrals related to avoiding evictions and accessing COVID-19-specific benefits. Staff have provided alternative resources such as grocery store gift cards for clients struggling with access to food. When clients have run out of diapers, staff have made emergency diaper runs. In addition, the foundation has connected clients to Response Fund grantees that serve as food sources and organizations that provide diapers, like Mitzvah Circle.



Center for Hispanic Resources

Chester Drug-Free Communities

Cribs for Kids

Delaware County Women, Infants, and Children (WIC)

Health Resource Center

Healthy Start

Nurse-Family Partnership (NFP)



The foundation's **BABY'S 1ST PROJECT** promotes collaboration among organizations working to reduce maternal mortality and infant mortality and morbidity, particularly for members of the Black community who suffer significant disparities in these health outcomes. The initiative's work includes education, information and resource sharing among maternal health stakeholders through the Community Action Network, as well as ongoing committee work through the Delaware County Breastfeeding Coalition and Seeds to Sprouts, a workgroup focused on growing support for pregnant women and families in recovery. The foundation recognizes that we cannot do this work improving outcomes for moms and babies alone. It takes a collective effort to make a lasting impact.



Throughout the pandemic, our **CRIBS FOR KIDS** team is supporting qualified families with contactless safe-sleep education and a crib to reduce the chance of sudden infant death syndrome (SIDS).

Honoring a Beloved Daughter

After a tragic accident in which their daughter Jenny died at age 19, Rick and Carol Parton wished to honor her legacy. They requested that friends and family give donations in Jenny's name in lieu of flowers. Jenny, a Garnet Valley graduate who was enrolled at Landmark College in Vermont at the time of the accident, had a learning disability. The Partons felt that the best way they could honor Jenny and her legacy was to provide scholarships for other students with learning disabilities who need financial support.



Today, more than 20 years later, the Partons are on a mission to annually award one graduating Garnet Valley senior with learning disabilities a \$2,000 scholarship for each year of college. The student can use those funds to pay for tuition, to purchase textbooks and more. In the future, the Partons would love to be able to provide a full college-tuition scholarship for a student with learning disabilities.

For the Partons, The Foundation for Delaware County was an ideal match for their philanthropic goals. After 23 years of managing the administrative burden of providing yearly scholarships, Rick and Carol decided to look for help. Carol's background in working with nonprofits helped in her research, and when she and Rick found the foundation, they knew it was the perfect fit for them. Not only could they establish a scholarship fund in memory of Jenny, they could

also establish a donor-advised fund with their appreciated stock to manage all their philanthropic activity in one place. All this came without the burden and worry of the back-office tasks.

Rick and Carol have included the foundation in their wills so that both funds may continue in perpetuity. Their daughter Jessica, a special education teacher at Garnet Valley, is a member of the scholarship committee and will help to carry on their legacy. The Partons feel fortunate that they can provide opportunities for others, and they are grateful for the support that the foundation provides to help them fulfill their charitable goals.

Partner With Us to Fulfill Your Philanthropic Mission

The Foundation for Delaware County is dedicated to helping you support the causes you care about. We offer

To learn about starting a fund to support a cause close to your heart, please see the inside back cover. Contact Ellen Grill at egrill@delcofoundation.org or 610-744-1015 for more information about giving opportunities in Delaware County.

Rick and Carol Parton



“Working with The Foundation for Delaware County makes our life a lot easier. I cannot imagine why folks would not consider a community foundation to assist with their charitable giving.”

Photo: Zave Smith

several types of funds and can help you establish one that will allow you to choose when to give, how much to give and for what purpose your funds will be used. For example, a donor-advised fund (DAF) is a flexible vehicle that allows you to take an active part in grantmaking. If your interests change over time, your grantmaking can, too. You can make recommendations about grants to any qualified nonprofits in Delaware County or throughout the country. You can also partner with us to focus on the causes and projects you care about, tapping into our expertise in the local nonprofit community.

If you wish to involve your children in your philanthropy, like the Partons, a DAF offers a less expensive and less burdensome alternative to creating a private family foundation, and it demonstrates the importance of providing for the future of our community. Because you recommend grants to the organizations most meaningful to you, a DAF is an especially personal way to make an impact — now and in the future. Whether you care deeply about the arts, healthcare, education, human services, the environment, social justice or another cause, we have flexible giving options that can help you do good in the communities you love.

Did you know that you can expand your support by making a gift without parting with any money now?

If you're curious about how you might further the foundation's mission through a gift in your will, a living trust, or some other type of estate gift, we can help. There are options you may not have considered that can create a legacy you may never have dreamed possible.

Fiscal Year 2020 Financial Report

The foundation takes investing your funds very seriously. We seek the best possible risk-adjusted return — maximizing dollars available to fund critical work in Delaware County today, while prudently stewarding and growing those resources to maintain an enduring source of philanthropic capital to meet emerging needs well into the future. We remain committed to responsible stewardship, transparency and public accountability in all that we do.

The performance objective for the investment portfolio is to achieve an average total rate of return that is equal to or greater than the foundation’s expected spending, plus inflation. It is expected that the annual rate of return on investments will be commensurate with the prevailing investment environment. The portfolio yielded a 6.76 percent return this year, beating the blended benchmark. Since its inception, the portfolio has returned 7.91 percent, also outperforming the blended benchmark.

In addition, the Investment Committee has opened an environmental, social and corporate governance (ESG) fund and is researching investment strategies to expand those options. It is the goal of the committee to incorporate ESG investing principles into the foundation’s investment strategy in 2021.

Your collective giving helps us transform our region for the better and enrich the quality of life throughout Delaware County. Together we will continue to support many wonderful causes throughout the community.

Ted Peters
Ted Peters, Chair, Finance Committee

H. Edward Hanway
H. Edward Hanway, Chair, Investment Subcommittee

Statements of Financial Position as of
June 30, 2020 and 2019

	2020	2019
ASSETS		
CURRENT ASSETS		
Cash and cash equivalents	\$ 2,670,981	\$ 2,253,684
Cash surrender value of life insurance	242,984	204,510
Pledges receivable, net	10,000	51,866
Grants receivable	670,722	511,764
Other current assets	146,826	111,359
Total Current Assets	3,741,513	3,133,183
NONCURRENT ASSETS		
Investments	59,223,307	58,789,811
Beneficial interest in perpetual trusts	1,744,320	1,795,399
Property and equipment, net	226,316	64,838
Total Noncurrent Assets	61,193,943	60,650,048
TOTAL ASSETS	\$ 64,935,456	\$ 63,783,231
LIABILITIES AND NET ASSETS		
CURRENT LIABILITIES		
Accounts payable and accrued expenses	\$ 234,321	\$ 487,122
Grants payable	122,780	256,000
Deferred revenue	106,530	-
Payroll Protection Program loan payable	183,325	-
Total Current Liabilities	646,956	743,122
NONCURRENT LIABILITIES		
Annuities payable	181,997	193,678
Environmental liabilities	177,208	208,908
Accrued paid time off	187,436	124,423
Insurance liabilities	243,305	256,561
Total Noncurrent Liabilities	789,946	783,570
NET ASSETS		
Without donor restriction	56,688,561	55,654,684
With donor restriction	6,809,993	6,601,855
Total Net Assets	63,498,554	62,256,539
TOTAL LIABILITIES AND NET ASSETS	\$ 64,935,456	\$ 63,783,231

Financial statements are also available at www.delcofoundation.org.

Statement of Activities
Year Ending June 30, 2020

	2020 TOTAL
PUBLIC SUPPORT, REVENUES AND GAINS	
Contributions	\$ 1,467,330
Grants from government agencies	4,560,797
Special events, net of expenses	81,712
Miscellaneous income	38,178
Changes in value of trusts	24,815
Investment income	3,688,148
TOTAL PUBLIC SUPPORT, REVENUES AND GAINS	9,860,980
EXPENSES	
Program services	7,443,532
Management and general:	
Administration	649,761
Development	390,278
Transition costs	121,627
TOTAL EXPENSES	8,605,198
CHANGE IN NET ASSETS FROM OPERATIONS	1,255,782
NONOPERATING REVENUES (EXPENSES)	
Loss on disposition of property and equipment	(13,767)
CHANGE IN NET ASSETS	1,242,015
NET ASSETS, BEGINNING OF YEAR	62,256,539
NET ASSETS, END OF YEAR	\$ 63,498,554

Investment Advisors: PFM
Trustee Bank: U.S. Bank
Operating Bank: TD Bank
Accounting Services:
CliftonLarsonAllen, Countryside Consulting, Inc.
Auditors: Barbacane, Thornton & Company

Thanks to Our Donors for Your Generous Support

- Individuals**
Anonymous - 6
Walter Abele
Kathy and Terry Adamson
Drs. Michael Adesman and Susan Weil
Karen and Mark Aigeldinger
Mike and Jen Albero
Beth and Scott Albright
Mindy Aldridge and Steve King
R. Scott Aldridge, Esq.
Nichole Almonte
Carolina G. Alshon
Mark and Barbara Amstutz
Kim Anderson
Linda Anderson, Esq.
Carole Andracchio
Charles Andrews
Nick and Shelley Aponte
Stephen Arrigo, M.D.
Kristina Austlid
Michael J. Ayrer
Bing Bai
Art and Margie Baker
Sylva Baker
Deena Ball
Robert and Michele Barbacane
Tim Bard
Suzanne and Tom Barton
Anthony Bastian
Dr. Bailey Baumann
Carl Becht
Andrea Belasco
Sheila Bell
Thomas and Elizabeth Belmont
Marilyn Berberich
Murray and Marie Berstein
Amy Bessler
Susan Bianco
Lisa Bildiren
Amy Binder
Stacy Biscardi
L. Joy Gates Black, Ed.D. and Dillet Black
Dr. Richard F. Blonski
David and Jennifer Bloom
Joanne Blythe
Corliss and Clayton Boggs
Dr. Mark Boudreau
Dr. Sheryl Bowen
Kelsey Boyd
Donna Boyer
Thurman Brendlinger and Dr. Lisa O'Mahoney
Claire Brill
Carol and Robert Briselli
Peter Brochet
William Brooks and Mary Nolen
Gregory Brown and Linton Stables, III
Susan Brown
Frederick Browne
Robert Bruce
Scott and Gretchen Bruce
Henry and Martha Bryans
Mr. and Mrs. Walter Buckley
Robert Burch and Mary Kappel Burch
Daniel Burke
Erin Burke
Jean Burke
Steven and Heidi Burman
- Annette Bushman
Lisa Roberts Cadorette
Rebecca Cahill
Lisa and Jose Calvo
Dr. Dina Capalongo and Dr. Paul Wilson
Kristin Cardi
Brian Carp
Margaret and Jerry Carpenter
Mrs. Patricia A. Carr
Susan Cavaliere
Debbie Cella
Joyce Chagnon
Dr. Tom Chermol, Jr.
Huiqin Chu
Eleanor Clark
William and Rita Clark
Karen Clarke
Bill and Mary Clinton
Cliff and Donna Cohen
Gary Cohen
Jane and Joshua Cohen, Esq.
Marion Cohen
Mary A. Coll
John Collett
Ana Collins
Joseph Comey
Llewellyn H. Cook
Valerie Ann Cook-Henry
Mary Cooper
Catherine Cosgrove
Eileen Courtney
Barbara Craig and Matthew Kremer
Dr. Betsy Crane
Chris Cullen
Peter Curtis
Mr. and Mrs. Howard Cyr
Ken Dabundo
Michele and Frank Daly, Esq.
Laurie Dameshek
Jayatri Das
Nicholas and Eileen DeBenedictis
Margaret Dee
Laura and Vincent DeFlavia
Brian DeGeorge
Annette Deigh
Susan and Robert DeLong
Cordelia and Donald Delson
Drs. Bruce and Cynthia Dembofsky
George DePaola
Cathleen Albertson Deutsch
Deb Dillon
Carmela Dindor
Robert DiPietro
Ellen DiStefano
Cyrise L. Dixon
Ceil and Eric Dobkin, M.D.
John and Alyssa Dogum
Orville and Zaza Domingo
Mary and Lance Donaldson-Evans
Michael Donoghue and Gale Fentress
Donoghue
Jennifer Donohue
Bruce Dorsey
Robert and Christine Dumont
Elizabeth Dunford
Carol and Daniel DuPont, D.O.
Norma Eichenger
Steven and Gloria Ellers





Ursula Erb
Ann Eves
Nancy and Roy Fairman
Ann Falkie
Kate Familetti
Amy Fantalis
Bruce Farnese
Donna Farrell
Margaret Farrell
John and Debbie Federico
Dr. Joel Fein and Dr. Victoria Levin
Marie Feindt, Esq.
Tammy Finsterbusch
Karen Fiore
Nancy and Bruce Fischer
Joann M. Florio
Harold Floyd
Vickie Forker
Richard Frankel
Matthew Frey
Bonnie and Eric Friedman
Kathleen Friel
Jon and Katie Friesen
Carol Fritz
Emily Furia
Lisa Gaffney
Joseph and Lara Gajewski
Mike Galante
Gerry Galgon
Bette Jean Ganter
Joseph Gardler
Will Gardner
Scott and Linda Garrett
Susan Garrison, Esq.
Grant Gegwich and Elizabeth Romaine
Carrie Gerber
Rebecca Gerber
Richard Gillen
Anthony Goldsmith
Michael Golightly
Vincent and Demaris Gordon
Ken Gorelick
Shoshanna Gottlieb
Melissa Graf-Evans and Jonathan Evans

Ellen and Robert Grill
Kim and Ron Grochowski
John and Gail Grosso
Ann Guidera-Matey
Dan and Cathy Hagan
Trisha Hall, Esq.
Lydia Hammer and Martin Josephs
Patrick Hannigan
Ellen and Ed Hanway
Nancy Harkins
Michael Harrington
Stephanie Hasanali
George and Loretta Hassel
Katherine Hastings
Elinor Hays
Richard Heller, Esq.
Diane Herkness
Lisa Hesbacher
Dr. John and Marcia Hiehle
James C. Higgins, Esq.
Joseph Hill
Dr. Annemarie Hirsch and Mr. Andy Hirsch
Cindy Hoffman and Martin Bergman, M.D.
Jil Hollenbach
Jeffrey Holmes
Clare Hughes
Shari Hughes
Elaine Hupchick
Chad Hydro
Samina Iqbal
Richard Jacob
Cathy James
Leo Janas
Chris Jastrzembski
Annie Johnson
Dr. Nancy Jordan
Sharon Joyce
James Kaib
Portia Kamara
Rabbi Louis Kaplan
Dr. Richard and Bonnie Kaplan
Nick Kaplinsky and Jennifer Pfluger
Drs. Steven and Lauren Katz

Neil Kauffman and Barbara Drebing
The Hon. Kevin Kelly
Michael Kelly and Joan Mazzotti
Dan and Carol Kennedy
Erin Kennedy-Rogers
Sarah Kenney
Katie Kenyon
Margaret Killcoyne
Samuel Killeen
Judith Kinman
The Hon. Stephanie Klein and David Landau, Esq.
Andrea Knox and Jonathan Hodgson
Ellen Kornfield
Joanne and Joel Krackow, M.D.
Lauren Krenzel and Michael Speirs, M.D.
Jonathan Krinick and Susan Goldberg
Carol Kroch
Nancy Krody
Karen and Frank Lade
Abigail Lang
Marge LaRue
Frances and Joseph Lastowka, Esq.
Christina Leboffe
Michele LeFever Quinn
Collette LeFever
Mary C. LeFever
Kathleen Lehman
Stephen Lehmann and Carol Sabersky
Michael and Paula Lehrberger
Cheryl Lemmerman
Jeff L. Lewin, Esq.
David Paley Lichtenstein and Rebecca Silver
Katy Lichtenstein
Robert and Sandra Lichtenstein
Maria Ligos
Elizabeth Lincoln
Dr. Andrea Liu
Anne Lund
Tiiu Lutter
Sandy and Bruce Lutz, M.D.
James and Maria Lynch
George Maalouf



Photo: Zave Smith

Ellen Magenheim
Michael and Sofia Magnavita
Kathleen Mahon
Dolores Mannion
Sara Marcq
Jennifer Marino
Lori Markusfeld and Jeffrey Cole
William Martindale
Michael and Kristy Mattise
Julia Mayer, M.D. and Barry Jacobs, M.D.
Donna Mayforth
Kevin Maynard
Pamela McAlonan
Elizabeth McAndrew
Dennis C. McAndrews, Esq.
John and Debra McCarthy
Teresa and James McCullough
Sophie McDevitt
Graham McDonald
Sheryl McGinley
Chris McGinniss
Jack McGrath
Katherine McKinstry and Marc Badger
Patricia McKnight
Joseph McLaughlin, Jr.
Charles McLister
Andrew McMenamin
Charles McNulty
Brenda McPherson
Martin Meenan
Roberta Menapace
Guy Messick, Esq.
Belle Miller
Gerald Miller and Lois Frischling
Joseph Miller
Ima Monroe
James M. Mordy
Ellen Morfei
Mike Morgan
Jeannie and Eleazar Morris, M.D.
Alison Morse
Jim Moskowitz
Charlotte Mulvihill

Theresa Murdock
Louisa and Stephen Mygatt
Jack and Barbara Nagel
Marie Natoli
Daniel Nesbitt
Cheryl and Nathaniel Nichols, Esq.
Mary Nolen
Pat Nolen
Leslie Everts, M.D. and Robert Noll, M.D.
Albert Novelli
Joy and Richard Oakey
Joseph and Michele O'Brien
Patricia O'Donnell
Dr. Donald Oken
Joseph Orso
Dr. Michele Oswell
Dr. Joseph and Marilyn Pappano
Vatsal Parekh
Henrik and Jennifer Parker
Susan Parker
Rick and Carol Parton
Dr. Homayoon Pasdar and Cheryl Riley Pasdar
Rachel Pastan
Richard Peezick
Christopher H. Peifer, Esq.
Kara Peiffer
Edward Pelc
David and Cynthia Pelton
Ted Peters
Theresa Pettaway
Joanne Phillips
Helen Davis Picher and Oliver Picher
The Hon. Dominic and Diana Pileggi
Karen Pinsky
Melanie Pistilli
Peter Pitts
Amy and David Pollack, M.D.
Caroline Pollard
Roberta Potisc
Henry Price
Rebecca Prince
Nancy Prindle

Patricia Prior
Lynn Procopio
Barbara Prutzman
Jeffrey Purdy
Stacey Quinn
Therese Quinn
Susan and Mike Ranck
James Raymond
Mark E. Rebold
Andrea Reeves
Tom Reiter
Gail Ruehr
John Ricci
Roberta Riccio
Patricia Rice
Joan K. Richards
Dana Ridpath
Francis Rigney
Richard Riley
Jeanette Riveria
Patricia Rizzo, Esq. and Paul Sisk
Patricia Robertson
Jordan Rodriguez
Justin Roe, M.D. and Jacqueline Roe, Esq.
Marc Romisher
Andrew and Paula Rosen
Anne M. Rossillo
Madge Rothenberg
Ann Rothmann
Terry Rumsey
Daniel Ryan
Dr. Cynthia Sacharok and Jeffrey Costa
William Saffici
Matt Sallimo
Robert Sander
Robert Sartain
John Savoy
Linda and Joseph Scafiro
Rose Ann Scanlon
Robert and Judith Schachner
Dr. Phyllis and Alan Schapire
Lisa and Gary Schildhorn
David Schneck

Frances Schultz
Kevin Schurek
William Schuster
Michelle Scolnick
Jon Scott
Phillip and Virginia Scott
Robert and Mary Ellen Scott
Janet Semler
Jean M. Shatoff
Nancy Shaw
Frances Sheehan and Ricardo Gelman, M.D.
Dr. Susan Sherr-Pollard
David Sherwin
Thomas and Joanie Shoemaker
Dr. Lawrence and Jeanie Shor
Dr. Katherine Sibley
Laura and Ron Siena
Frank Siermine, Jr.
Matt Sigel
Dr. Julie Silverstein and Carlos Sacanell
Louise Schorn Smith
Scott Smith
Larry Smoose
Jonathan Sokoloff, Esq.
Drs. Rhonda and Richard Soricelli
Susan Spangenberg
Dr. Harvey and Naomi Spector
Patricia Spires
Lynn Sponheimer
Chris Stanley
Andrew and Penni Starer
Anne Stauffer
Laura Stegossi
Jason Steigleman
L.J. Steinig
Mark Stephens
Karen and Louis Stesis

Frances Stier and Stephen Maurer
Phillip Strauss
Will and Lizzie Streit
Alice W. Strine, Esq. and Walter Strine, Esq.
Janet Sullivan
Ann Swan
John Swartzentruber and Lauren McKinney
Andrew Szabo and Susan Long
Jennifer Tate
Karen Taussig-Lux
Joseph Taylor
Kathy Taylor
Frederick Teitman
Virginia Thompson
Kelly Thornton Davis
Constance and Andrew Tighe
Grace Tillman
Ann Torregrossa
Susan Turkel
Rich Turturici
Donna Uffelman
William Uzdzienski
Christine Vasko
Karen Veely
Fern Vernick
Christopher Versak
Hetal Vidwans
Frances Vilella-Velez
Raymond J. Vivacqua, M.D.
Anne Von Hertsenberg
Jan Waldauer
Elizabeth Wallace
Jeff Wallace
Anne Walsh
Margaret Walter
David Waxler
Walter Weeks

Arthur Weisfeld and Virginia Brabender
Eric Weislogel
Suzanne and Robert Welsh
Aaron Wemhoff
Susan Whartnaby
Gail Whitaker, Esq.
Stephen White
Jay and Dana Wiley
Harold Wilkinson, M.D.
Karen Willcox
Ellen Williams
Jennell Williams
Dr. Sam Williams
Heather and Matthew Williamson
Catharine Wilson-Hall
Paul Winnington
Walter and Patricia Woerheide
Jeffrey Wolken
MaryAnn Wood
Agnes Wozniak
Theresa Wright
Nefetaria Yates
Marie Young
Dr. Russ and Judy Young
James Ziegelhoffer
Jack and Sherry Zigon
Dr. Deborah Meislich and M. Michael Zuckerman
Steven Zuk

Please let us know if you see an error or omission in our list, particularly if you have a spouse or partner you would like us to include in the future. We can update this online list within days. Thank you.

Foundations

The 25th Century Foundation
Alpin W. Cameron Memorial Trust
The Barra Foundation
Connelly Foundation
Dale L. Reese Foundation
The Dietrich W. Botstiber Foundation
Ethel Sergeant Clark Smith Memorial Fund
Jack and Jill of America Foundation
Media Rotary Foundation
Merck Foundation
Nathan Speare Foundation
Nelson Foundation
Scholler Foundation
Silicon Valley Community Foundation
Sun East Charitable Foundation
Tally Foundation
TD Bank, N.A./TD Charitable Foundation
The Philadelphia Foundation
The Walter and Alice Strine Foundation
Weil Family Foundation
William Penn Foundation
Zidek Family Foundation

Organizations and Businesses

Access Matters
A.J. Jurich, Inc.
Alliance Cancer Specialists
Alliance HealthCare Services
AllState Giving Campaign
American Academy of Pediatrics
AmeriHealth Caritas Family of Companies
Anonymous
Associates in Anesthesia, Inc.
Associates in Hematology-Oncology
B.A.C. Cancer Transportation Fund
Bank of America
Brinker Simpson & Company
Bristol-Myers Squibb Company
Bryn Mawr Trust Company
Cardiology Consultants of Philadelphia
Carty Eye Associates
Chester Water Authority
Children's Hospital of Philadelphia
CHOP Care Network – Delaware County
Christ's Community Church – Women's Association
CKHS Hospice and Home Care
CliftonLarsonAllen
Comcast Corporation
Concord Auto Body Shop, Inc. – Media
Consultants in Medical Oncology & Hematology
Coyle, Lynch & Company
Crozer-Chester Hospitals Medical Staff Fund
Crozer-Keystone Health System
DCMH – Medical Executive Committee
Delaware County Firemen's Association
Delaware County Law Enforcement Memorial Foundation
Delaware County Memorial Hospital Medical Staff Fund
Drexel Agency
The Employees Community Fund of Boeing
ESSA Bank & Trust

Evolution Partners
Exelon Corporation
Fifth Generation, Inc.
First AME Church of Sharon Hill
GIANT Food Stores
GTC Ceramic Tile
Haverford Trust Company
Interpublic Group of Companies
JMC Fund – Northern Trust Charitable Giving Program
Johnson & Johnson Matching Gifts
Joseph Anthony Retreat Spa & Salon
Kendra Scott Jewelry
Keystone First
Laborers' International Union of North America Local 413
Lamb McErlane, P.C.
Logan Funeral Home
Lynne Steuerle Fund
Macy's
Magnolia Fund
Main Line Fertility
Main Line Telecommunications
Maternal and Child Health Consortium of Chester County
Media Real Estate
Mercy Fitzgerald Hospital – Trinity Health
Meridian Bank
MidLantic Urology
National Board of Medical Examiners
Network for Good
Nurse-Family Partnership National Service Office
Park Power
PECO Energy
Penn Dental Family Practice – Main Line
Pennsylvania College of Health Sciences
Nursing BSN Faculty
PFM Asset Management
City of Philadelphia
Philadelphia Hand to Shoulder Center
Pinocchio's Pizza
PNC Capital Advisors
Precision Radiation Oncology
Premier Medical Management
Prospect CCMC
Prospect DCMH
Reformation Lutheran Church
Reliable Computer Solutions & More
Ridley School District
S1 Medical
S&P Global
Schultz & Williams
Southeast Medical Imaging
Springfield Country Club
Springfield Ford Lincoln
Steamfitters Local Union No. 420
Stillwater Capital Advisors
Summit Actuarial Services
Swarthmore Friends Meeting
Swarthmore Rotary Charitable Trust
Unitarian Universalist Church of Delaware County
United Way of Greater Philadelphia and Southern New Jersey

Vanguard Matching Gift Program
Vanguard MPM Enhancements Team
Walsh & Nicholson Financial Group
WSFS Bank

Funds and Scholarships

Albright Family Foundation
Alice and Walter Strine Fund
Betty Speare Loughead Fund
Boggs Family Fund
Burn Care Funds
Cancer Care Funds
Children's Asthma Fund
Cribs for Kids Fund
Crozer-Chester Hospitals Medical Staff Fund
David Peifer Fund
Debby Yoder Advised Fund
Delaware County Covid-19 Response Fund
Delaware County Memorial Hospital Medical Staff Fund
Delco Counts 2020 Census Action Fund
Emergency Medicine — Toxicology Fund
Erb Trust
Estate of Frances Dunn Cherry
Eva Miller Nursing Scholarship Fund
Family Medicine Residency Support Fund
Girls Night Out — Women Helping Women with Cancer Fund
The Harry and Mary LeFever Family Fund
Hospice and Home Care Funds
The Jenny Ann Parton Scholarship Fund
Kevin Tighe Memorial Scholarship Fund
The Malibu Fund
Parton Dourlet Family Fund
Patrick and Jean Gavin Fund for Youth Development
Philadelphia Cyberknife Medical & Scientific Fund
President's Fund
Susan Reiley Memorial Fund
Thomas Wolfarth EMS Training Fund

Government Grants

Pennsylvania Department of Community and Economic Development:
Neighborhood Assistance Program
Census 2020 Outreach Grant Program
Pennsylvania Departments of Education and Human Services, Office of Child Development and Early Learning:
Nurse Family Partnership
Maternal, Infant, and Early Childhood Home Visiting Program (MIECHV)
Pennsylvania Department of Health:
Pennsylvania Special Supplemental Nutrition Program for Women, Infants, and Children – WIC
U.S. Department of Health and Human Services:
Health Resources and Services Administration, Maternal and Child Health Bureau (Healthy Start)
Substance Abuse and Mental Health Services Administration (Drug Free Communities and STOP ACT)



Volunteer Leadership

FY21 Board of Directors

Dominic F. Pileggi, Chair
Corliss Boggs, Vice Chair
Nathaniel C. Nichols, Esq., Secretary
Ted Peters, Treasurer
Michael B. Adesman, M.D.
Robert J. Bruce
Donald W. Delson, Esq.
Cyrise L. Dixon
Daniel C. DuPont, D.O.
L. Joy Gates Black, Ed.D.
H. Edward Hanway
Michael B. Magnavita, CPA
Joan K. Richards
Thomas A. Shoemaker
Robert N. Speare, Esq.*
Alice W. Strine, Esq.
Kate Zidek

*Immediate Past Chair

Advancement Committee

Robert N. Speare, Esq., Chair
Michael B. Adesman, M.D.
Corliss Boggs
Cyrise L. Dixon
Robert Dumont
Michael B. Magnavita, CPA
Alice W. Strine, Esq.

Finance Committee

Ted Peters, Chair
Scott Bruce
Donald W. Delson, Esq.
H. Edward Hanway
Michael Mattise
Joan Dawson McConnon
Thomas A. Shoemaker
Suzanne Welsh**
Kate Zidek

Investment Subcommittee

H. Edward Hanway, Chair
Scott Bruce
Donald W. Delson, Esq.
Michael Mattise
Allison Ziemer Mortensen*
Ted Peters
Suzanne Welsh**
Kate Zidek

Governance Committee

L. Joy Gates Black, Ed.D., Chair
Corliss Boggs
Robert J. Bruce
Donald W. Delson, Esq.
Daniel C. DuPont, D.O.
Nathaniel C. Nichols, Esq.

Grantmaking Committee

Corliss Boggs, Co-Chair
Robert J. Bruce, Co-Chair
Nicholas Aponte
Michele Daly
Cyrise L. Dixon
Vincent Gordon
Lydia Hammer
Nathaniel C. Nichols, Esq.
Helen Davis Picher
David Pollack, M.D.
Joan K. Richards
Alice W. Strine, Esq.

Planning Committee

Thomas A. Shoemaker, Chair
Robert J. Bruce
Donald W. Delson, Esq.
L. Joy Gates Black, Ed.D.
Lydia Hammer
H. Edward Hanway

Census Grantmaking Committee

Nathaniel C. Nichols, Esq., Chair
Mindy Aldridge
Helen Davis Picher
Michael Ranck
Malcolm Yates

COVID-19 Advisory Committee

Michael B. Magnavita, CPA, Chair
Cyrise L. Dixon
L. Joy Gates Black, Ed.D.
Grant Gegwich
Joseph McLaughlin
Robert Simpson
Kelly Thornton
Malcolm Yates
Brian Zidek

Golf Committee

H. Edward Hanway, Co-Chair
Robert N. Speare, Esq., Co-Chair
Robert Barbacane, CPA
Corliss Boggs
Andrew Brenner
Brian Crimmins
Robert DeLong, Esq.
Daniel Hagen
Kevin Hagenberg
Rocco Imperatrice, Esq.
Andrew McMenamin
Colleen Morrone
Thomas A. Shoemaker
John Spagnola
Robert Stiles

*New Member

**FY20 Member

Delco Arts Week Goes Virtual



A gift to the **Greater Philadelphia Cultural Alliance** helped launch the inaugural Delco Arts Week in September 2019 with over 70 events at more than 30 venues throughout the county. As we went to press, a week of virtual events was held in October 2020.

Housing Stability Program Launches



The foundation is grateful for the generous contributions of Bryn Mawr Trust, Keystone First, Meridian Bank, S1 Medical, and WSFS Bank this year, making the launch of the foundation's new Housing Stability Program possible. Each organization is receiving tax credits through the commonwealth's Department of Community and Economic Development's Neighborhood Assistance Program.

The Housing Stability Program provides participants in the foundation's Healthy Start and Nurse-Family Partnership programs with assistance and support in accessing affordable housing units through the Chester Housing Authority.

Senior Staff

Frances M. Sheehan, President
Joanne D. Craig, Vice President for Programs
Laura DeFlavia, Chief Financial Officer
Ellen Y. Grill, Vice President for Advancement and Philanthropic Services

Create Your Legacy

Our donors enjoy:

ACCESS

to our broad knowledge of Delaware County's nonprofit organizations and the needs of our county

PARTICIPATION

in the grantmaking process for donor-advised funds they establish

FOUNDATION MANAGEMENT

of funds and oversight of all investments, which includes maintaining appropriate tax records and conducting due diligence processes in a timely and effective way

Choose the right fund for you.

You choose which fund will best match your charitable goals and tell us how long you want your fund to last, whether it's over a fixed period of years or forever.

1. UNRESTRICTED FUNDS

We use your funds, at our discretion, to award gifts to organizations we believe are working to improve the community.

2. DONOR-ADVISED FUNDS

Donor-advised funds are the most flexible vehicle for your philanthropic goals. The foundation will partner with you to focus on the causes and projects you care about. You can make recommendations about grants to any qualified nonprofits in Delaware County or throughout the United States.

3. SCHOLARSHIP FUNDS

You can express the educational values you believe in through scholarships to deserving students who meet your criteria.

4. FIELD OF INTEREST FUNDS

We can use these funds to award grants to nonprofits that are making a difference in causes dear to you.

5. DESIGNATED FUNDS

You may designate one or more specific organizations to receive your endowed funds. This type of fund is a good way to make annual or ongoing gifts to the nonprofit of your choice.

6. ORGANIZATIONAL ENDOWMENT FUNDS

Nonprofits may choose to house their endowments at the foundation. These professionally administered funds provide organizations with a permanent source of income. Other donors also can contribute to the fund through living or planned gifts.



Photo: Zave Smith



**The Foundation for Delaware County is on a mission
to create a vibrant future for all who call
Delaware County their home by:**

**Promoting generosity in and for the people of our county,
Improving the well-being of our residents, and
Energizing participation and partnership across our communities.**



www.delcofoundation.org

200 E. State St., Suite 304, Media, PA 19063



**THE
FOUNDATION FOR
DELAWARE
COUNTY**

- Cultivating Philanthropy
- Transforming Community

CREDITS | Managing Editor: Katy Lichtenstein | Design: Twistnshout